



FirstSpirit™

Unlock Your Content

FirstSpirit™ Release Notes

FirstSpirit™ Version 5.2 Release 4

Version	5.2.421
Status	RELEASED
Date	2016-06-07
Department	FS-Core
Copyright	2016 e-Spirit AG
File name	Releasenotes_5.2.421_EN

e-Spirit AG

Stockholmer Allee 24
44269 Dortmund | Germany

T +49 231 . 477 77-0
F +49 231 . 477 77-499

info@e-Spirit.com
www.e-Spirit.com

e-Spirit

Table of contents

1	Discontinuation of the proprietary installation packages for FirstSpirit version 5.2R5.....	7
2	Notes concerning downgrades / upgrades.....	7
3	Documentation for FirstSpirit SiteArchitect: now available in HTML format, too.....	8
4	Administration: Modified protocol for FirstSpirit web applications.....	10
5	Administration: The new FirstSpirit Health Center.....	10
6	ContentCreator: Improved performance when displaying datasets in input components.....	13
7	ContentCreator: Selection dialog for next editor(s) of a workflow.....	14
8	External Synchronization: GUI will be omitted.....	15
9	External Synchronization: New method "getModifiedProjectProperties" returns imported project properties.....	16
10	External Synchronization: New method "setExportRelease" to specify whether the release or the current state of elements should be exported.....	16
11	External Synchronization: New method "setIgnoreEntities" replaces "setCreateEntities"	17
12	Input components: Extended snippet access for FS_INDEX and FS_CATALOG.....	17
13	Input components: methods ".convert" and ".convert2" in FS_LIST.....	20



- 14 **Media: Optimized identification of file format of media uploaded via drag-and-drop.....20**
- 15 **Module Development, Scripts, API: Update of Web Applications.....21**
- 16 **Module development, scripts, API: Individualizing the global FirstSpirit web applications..... 22**
- 17 **Modules (Corporate Content): Editing multiple packages.....22**
- 18 **Modules (Corporate Content): Refresh package display.....23**
- 19 **Modules (Corporate Media): Limiting selections from remote projects to objects with a release state..... 24**
- 20 **Modules (FOP): Specify Standard Image Resolution..... 26**
- 21 **Modules: Distribution of FirstSpirit web applications as modules (.fsm).....27**
- 22 **SiteArchitect: Optimized keyboard control for consideration of pages and sections in generation..... 27**
- 23 **SiteArchitect: Optimized keyboard control of CMS_INPUT_LIST..... 28**
- 24 **SiteArchitect: Revised selection dialog and opening new workspaces.....29**
- 25 **SiteArchitect: Selection of revisions for merge..... 30**
- 26 **SiteArchitect: Simplified Creation of Entries in FS_CATALOG.....32**
- 27 **System: Integrated Software..... 33**
- 28 **Overview..... 34**
- 29 **Categories.....46**



29.1	Backup.....	46
29.2	Clipboard.....	46
29.3	Content Store.....	46
29.4	Content Transport.....	47
29.5	ContentCreator.....	47
29.6	Corporate Content.....	49
29.7	Database.....	50
29.8	Delta generation.....	50
29.9	Developer.....	50
29.10	Dynamic Forms.....	52
29.11	Editor.....	52
29.12	External synchronization.....	53
29.13	FirstSpirit API.....	55
29.14	FirstSpirit Administrator.....	56
29.15	Generation.....	57
29.16	Global settings.....	57
29.17	Indexing.....	57
29.18	Input Components.....	58
29.19	Integrated software.....	59
29.20	Launcher.....	60
29.21	License.....	60



29.22	Media Store.....	60
29.23	Module development.....	61
29.24	Modules.....	62
29.25	Page Store.....	63
29.26	Performance.....	63
29.27	Permissions.....	63
29.28	Preview.....	64
29.29	Project export / import.....	64
29.30	Release.....	64
29.31	Search.....	64
29.32	Security.....	65
29.33	Server Administrator.....	65
29.34	ServerManager.....	66
29.35	ServerMonitoring.....	67
29.36	Sessions.....	67
29.37	SiteArchitect.....	67
29.38	Snippets.....	71
29.39	Table templates.....	71
29.40	Tasks.....	71
29.41	Template Development.....	72
29.42	Template Store.....	72



29.43 Template Wizard..... 73

29.44 Version history.....73

29.45 Webstart..... 73

29.46 Workflow.....74



1 Discontinuation of the proprietary installation packages for FirstSpirit version 5.2R5

Discontinuation of the proprietary installation packages for RPM Package Manager (.rpm) and Debian (.deb). The installation packages named above are no longer available from FirstSpirit version 5.2R5 onward.

Still supported are TGZ (for all Unix platforms) and EXE (for Windows).

In future, FirstSpirit will offer a standardized, platform-neutral update management system for all FirstSpirit servers. FirstSpirit ServerMonitoring already provided an update check for all FirstSpirit servers in the “Health Center” area of version 5.2R4. An additional update mechanism is planned from FirstSpirit 5.2R5 onward.

2 Notes concerning downgrades / upgrades

Usually, FirstSpirit versions are forward and backward compatible if only the number of the minor or build version changes. When upgrading to FirstSpirit version 5.2R4 or downgrading please take into account the following notices:

Upgrade

It is recommended for all FirstSpirit server updates to newly create all self-produced modules vis-a-vis the new FirstSpirit version. In addition to this, all the installed modules delivered by e-Spirit and all web applications should also always be updated. Especially, the protocol for FirstSpirit web applications has changed in FirstSpirit version 5.2R4 (see also chapter “Administration: Modified protocol for FirstSpirit web applications”).

Downgrade

FirstSpirit Servers can not be downgraded to FirstSpirit version 5.2R3 or older by means of an in-place downgrade because of the update of the integrated Apache Derby database. Error report after downgrade:

```
ERROR XSLAN: Database at [path] has an incompatible format with the current version
of the software. The database was created by or upgraded by version 10.12.
```



Workaround: Export with FirstSpirit version 5.2R4 and import with FirstSpirit version 5.2R3.

See also chapter “System: Integrated Software”.

3 Documentation for FirstSpirit SiteArchitect: now available in HTML format, too

In addition to the Documentation for FirstSpirit ContentCreator, FirstSpirit Release-Notes and the FirstSpirit Online Documentation (ODFS), the Documentation for FirstSpirit SiteArchitect is now also created and managed by FirstSpirit. This means that FirstSpirit replaces Microsoft Word for the process of creating documentations. While the documentation has been available so far only in PDF format, it is now also available in HTML format (accessible from the ODFS). Up to now, approximately one half of the content of the documentation could be transferred to FirstSpirit. The result is published as beta version in FirstSpirit 5.2R4.

The screenshot shows the FirstSpirit Online Documentation interface. At the top, there is a search bar and a language selector set to 'Englisch / English'. The main content area is titled 'Start page / Documentation' and features a central 'Documentation' box with a hierarchical structure of topics. On the left, a navigation menu lists various categories, with 'Documentation FirstSpirit SiteArchitect (Beta)' highlighted by a red circle. Below the main content area, there is a section titled 'Documentation' with a brief description of the content and a note about user group assignments.

Advantages of FirstSpirit compared to conventional text processing programmes:

- simplified cooperation of editors
- all in one single place: structured, integrated storage of texts and pictures
- FirstSpirit standard functionality that facilitate editorial activities: for example integrated version history, integration of workflows, easy reuse of texts and media



- any additional functions required can be developed inhouse (for example Plug-in for project wide search and replace of text)
- PDF file at the push of a button
- system-supported translation process

Advantages for the customer:

- early internal testing of new FirstSpirit versions in productive use before official release
- links between the single documentations are possible (in the HTML edition, “FirstSpirit Corporate-Media” / Remote functionality)
- central search in all documentation is possible (in the HTML edition)

Review:

The **Documentation for developers** (the “ODFS”) is generated using FirstSpirit from the start. Publication medium: HTML. It can be accessed among other things from FirstSpirit SiteArchitect and constitutes an important part of the FirstSpirit documentation.

Since FirstSpirit 5.0 (09/2012) the **Documentation for ContentCreator** is created using FirstSpirit, too. Since then, it has been not only published in HTML but also in PDF format. The HTML edition can be accessed contextually from ContentCreator. In addition to the content pages, tooltips for icons and buttons in ContentCreator et al. are managed using this documentation project. Thus, we build another bridge between the core product and documentation.

The **Release Notes** for the release versions have been created using FirstSpirit for some time now, too (since FirstSpirit 4.0.25, 09/2007). The concerning project is closely connected with the internal build and bug tracking systems. Since FirstSpirit 5.2R2 the project works primarily with database content, for example in order to profit from the more comfortable reuse and sortability of content. Publication medium: PDF.

Outlook:

Further FirstSpirit documentation should be transferred to FirstSpirit in the future. Then it will be possible to establish more cross references, for increasing comprehensibility, redundancies are to be removed



in return. Central management of the templates and distributing them into the single FirstSpirit projects by using external synchronization is envisaged.

4 Administration: Modified protocol for FirstSpirit web applications

Usually, FirstSpirit versions are forward and backward compatible if only the number of the minor or build version changes. In order to support the new FirstSpirit Health Center functionality, the protocol for FirstSpirit web applications was modified and is now incompatible to that of previous versions. As in any upgrade and downgrade procedure, it is necessary to ensure that the FirstSpirit web applications are compatible with the FirstSpirit server software's version.

If JAR files were manually deployed into web applications or onto web servers, the following message may be written to the log:

```
java.lang.IllegalArgumentException: Wrong protocol version (4653080000)
```

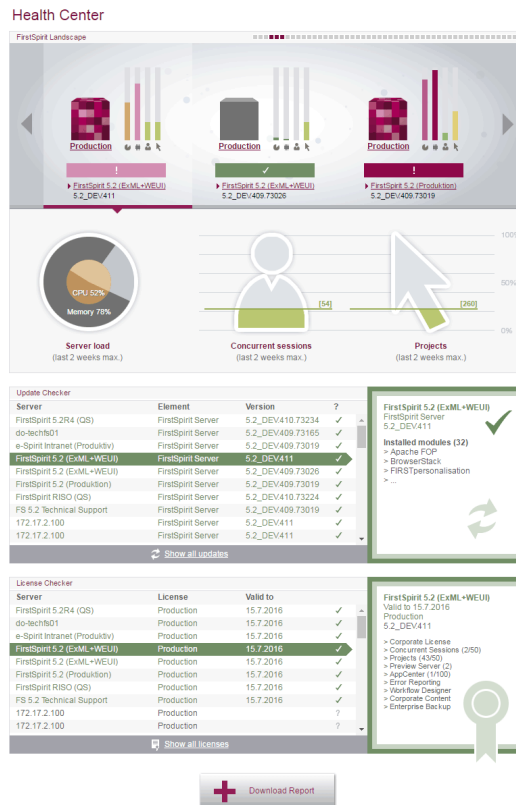
In this case, the JAR files must be updated manually.

5 Administration: The new FirstSpirit Health Center

The browser-based FirstSpirit ServerMonitoring is used to monitor the FirstSpirit Server. In addition to current operational parameters such as memory utilization, number of users, projects and sessions, it shows configuration parameters and error reports of the server. Beyond that, the server can be configured by means of the ServerMonitoring, too.

Whereas until now you could retrieve system information for the local FirstSpirit Server using the page “State” (below the menu entry “Overview”), the new FirstSpirit Health Center provides from FirstSpirit version 5.2R4 onward data relating to hardware utilization, as well as clearly displaying information on which FirstSpirit versions and licenses are being used by all FirstSpirit servers on a network. You can therefore see at a glance where optimizations can be made in terms of the hardware and software used for FirstSpirit. This Health Center is the entry point for the FirstSpirit ServerMonitoring.





FirstSpirit Health Center

Thanks to the color coding used in the top area of the page (“FirstSpirit Landscape”), any looming **hardware** bottlenecks can be identified at a glance, so targeted measures can be taken at an early stage before there are any application delays or even system failures.

You can also use the Health Center to make sure, with the help of the system, that the local FirstSpirit server and/or all FirstSpirit servers on your network always have the most up-to-date software. Only a current **FirstSpirit version** can ensure that all FirstSpirit functions will be available and that the software will run as well and reliably as possible. You can use the Health Center to update your local server as well as other FirstSpirit Servers which can be reached on the network.

Note: To check if a FirstSpirit server uses the latest software version, a license ID is sent to e-Spirit, since this is all the information that is needed to carry out a detailed and accurate check. The license ID can also be used to check whether the maintenance contract for this license is still valid and whether the customer is therefore entitled to have errors fixed, for example.

If FirstSpirit is to run smoothly, it is also very important to use a valid **license** license that is appropriate for the type of use in question. Linked to the license are, among other things, the license holder’s mainte-



nance permissions; this means that only if the customer has a valid license in conjunction with a valid maintenance contract will he be entitled to have reported errors fixed, for example. You can use the Health Center to update the license of your local server as well as those of other FirstSpirit Servers which can be reached on the network.

All the utilization/version and license data from this overview page can be summarized and downloaded in a file (.json format).

For more information see *FirstSpirit Manual for Administrators*,

- Chapter “FirstSpirit ServerMonitoring”
- Chapter “Licence configuration (fs-license.conf)”

and *FirstSpirit Installation Instructions*.

Modifications concerning the visualization of the used license were made within the scope of this Health Center implementation, too. The license with license type and licensee will now be displayed at the following points:

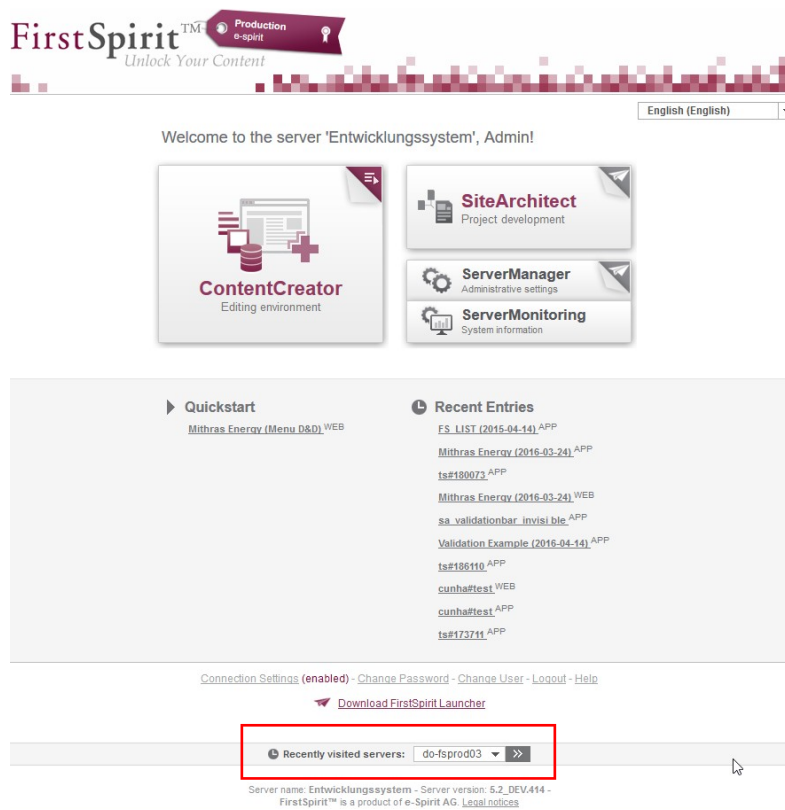
- FirstSpirit start page:



- FirstSpirit SiteArchitect:
 - start dialog (“Splash screen”)
 - horizontal tool bar
- FirstSpirit ContentCreator:
 - start dialog (“Splash screen”)
 - Page status area

Furthermore, FirstSpirit servers, on which the user was recently logged in, can be selected via the FirstSpirit start page. The start page of the selected server will open in a new browser window:





6 ContentCreator: Improved performance when displaying datasets in input components

The input component CMS_INPUT_LIST allows selection of values which have been defined by project developers. When used in conjunction with CMS_INCLUDE_OPTIONS, database content can be displayed within the input component, e.g.

```
<CMS_INPUT_LIST name="IDENTIFIER">
  <CMS_INCLUDE_OPTIONS type="database">
    <LABELS>
      <LABEL lang="*">#item.COLUMN</LABEL>
    </LABELS>
    <TABLE>NAME_OF_TABLE_TEMPLATE</TABLE>
  </CMS_INCLUDE_OPTIONS>
  <LANGINFOS>
    <LANGINFO lang="*" label="Dataset selection"/>
  </LANGINFOS>
</CMS_INPUT_LIST>
```



In ContentCreator forms, depending on the browser, display of such an input component which references a data source that contains many datasets may be slow. As of FirstSpirit 5.2R4, the display is thus limited to 100 entries. If more than 100 datasets are available, the following message will be shown in the form: “The list of available entries has been truncated due to browser limitations. This input component is not suitable for lists of this size.” Please note that rules will only be applied to the entries displayed in the form.

It is recommended to use FS_INDEX (with an implementation of DataAccessPlugin) instead of CMS_INPUT_LIST.

For further information about CMS_INPUT_LIST, CMS_INCLUDE_OPTIONS, and FS_INDEX, see *FirstSpirit Online Documentation*,

- “Template development / Forms / Input components / INDEX”
- “Template development / Forms / Input components / LIST”
- “Template development / Forms / Data elements / OPTIONS / DATABASE”

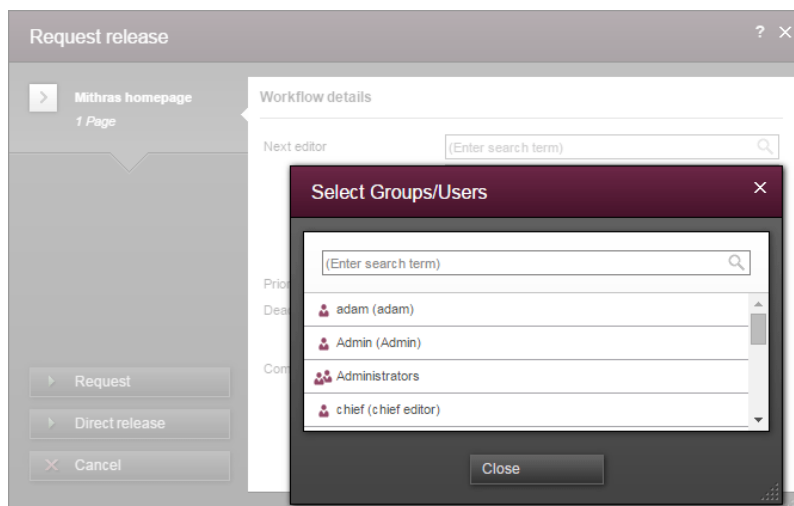
7 ContentCreator: Selection dialog for next editor(s) of a workflow

In FirstSpirit, a workflow is always a sequence of tasks or work steps which are carried out in a given order. Each task can be assigned to a user or a group of users. The workflow controls the logical sequence of individual tasks so that only the currently appropriate task can be carried out. If a user completes one task, another user responsible for carrying out the next task is automatically notified.

In ContentCreator, workflows can be started and transitions within an active workflow can be triggered using the page status display (e.g. “Modified page”, “In workflow”) in the ContentCreator toolbar. In the activity dialog for this workflow, the option “Next editor” may be used to define which user or user group should be notified that the workflow has been transitioned to the next task.

To this end, the user's name may be entered directly into the “Next editor” text box, or a drop-down list showing a number of available users can be opened by simply clicking on this text box. As of FirstSpirit version 5.2R4, users may also open a larger selection dialog by either clicking on the magnifying glass icon in the text box or by clicking on the entry “Show more entries...” at the bottom of the drop-down list:





Dialog "Select Groups/Users"

This dialog lists all available users and user groups and supports search functionality. By clicking on the user or group's entry in the list, this user or group is selected, and the dialog closes automatically, adding that user or group to the "Next editor" field in the activity dialog.

For further information, see *FirstSpirit Manual for Editors (ContentCreator)*, "Report area / Tasks / Workflows".

8 External Synchronization: GUI will be omitted

Previous feedback and experience show that the external synchronization, which has been provided since FirstSpirit 5.1, is mainly used programmatically in the context of a distributed development process - instead via the GUI within the SiteArchitect. For this reason we decided to omit the GUI with FirstSpirit 5.2R4.

We ask all customers and partners to switch their development process to our API or to the command line tool "FSDevTools". It encapsulates the existing API and can be used via the command line or an IDE.

Please contact our Technical Support if any problem occurs while changing your development process.

Further information can be found in the [Community](#).



9 External Synchronization: New method "getModifiedProjectProperties" returns imported project properties

Using the functionality “External Synchronization”, structures of a FirstSpirit project (e.g. templates, partial store trees, project properties) can be exported into a file system, creating a folder hierarchy which reflects the project’s structures. Export and import is carried out using interfaces and methods of the FirstSpirit Developer API.

In addition to the project content that is entered in SiteArchitect and/or ContentCreator, project properties can also be exported/imported with the “External synchronization” function, including across servers. This method can be used, for example, to transfer the properties of a project to an empty project as well as to synchronize the project configuration of multiple projects.

You can use the method `getModifiedProjectProperties()` of the interface `ImportOperation.Result` (FirstSpirit Developer API, package `de.espirit.firstspirit.store.access.nexport.operations`), which has been introduced with FirstSpirit version 5.2R4, to identify if and which type of project settings were imported (for example template sets).

10 External Synchronization: New method "setExportRelease" to specify whether the release or the current state of elements should be exported

FirstSpirit version 5.2.313 introduces a new method, `setExportRelease(boolean)`, in the interface `ExportOperation` (package `de.espirit.firstspirit.store.access.nexport.operations`), which can be used to specify whether the “release” or the “current” state of selected elements should be exported.

In the same FirstSpirit version, the method `setExportReleaseEntities(boolean)` in the interface `ExportOperation` has been marked “deprecated” and may be removed in future versions. Uses of this method should be replaced with `setExportRelease(boolean)`. Methods set to the “deprecated” state can still be used, but as they will be omitted in subsequent versions, this is not advisable. If methods, classes, and interfaces that are no longer supported or are set to deprecated are used in scripts and/or modules, entries are written to log files accordingly (e.g., server log, generation log, etc.). The corresponding log entries should be checked and the cause(s) remedied.



11 External Synchronization: New method "setIgnoreEntities" replaces "setCreateEntities"

The interface `ImportOperation` (FirstSpirit Developer API, package `de.espirit.firstspirit.store.access.nexport.operations`) provides methods with which files may be imported from an external file system into a FirstSpirit project based on customer-specific rules using the functionality “External Synchronization”.

The method `setIgnoreEntities(boolean ignore)` replaces the method `setCreateEntities`, which has been deprecated as of FirstSpirit version 5.2R4. The new method controls whether existing entities should be imported into the FirstSpirit project.

The default setting is `false`, which causes External Synchronization to import all entities that are currently stored in the file system into the FirstSpirit project, updating existing entities in the project to reflect the data imported from the file system or, if necessary, creating new entities with that data. In order to suppress import of entities from the file system into the project and preserve the entities that exist in the project, call `setIgnoreEntities(boolean ignore)`, providing the `ignore` value `true`.

For further information, see

- *FirstSpirit Online Documentation* “Advanced topics / External synchronization”
- FirstSpirit Developer API, package `de.espirit.firstspirit.store.access.nexport.operations`

12 Input components: Extended snippet access for FS_INDEX and FS_CATALOG

The “Snippets” can be used in many places in FirstSpirit: e.g., when displaying FirstSpirit objects in search results, in reports, and also to display entries in FS_CATALOG and FS_INDEX. In the definition of snippets (in templates) the template developer can specify what information about the FirstSpirit object is to be used in search results, reports, etc. and thus customize the content to meet the specific needs of editors and the conditions of the project concerned.

The following additions have been made to this area with FirstSpirit version 5.2R4:

FS_CATALOG: Simplified access to values using dot notation (`getItems` method)



The FS_CATALOG input component can be used to create and manage lists of sections or links.

It returns a `Catalog` object which contains `Card` objects. A `Card` object represents an entry in FS_CATALOG and contains information about

- the section or link template selected by the editor for this entry,
- the form fields defined in the selected template,
- the values saved by the editor in the form fields.

The new `getItems` method (in Bean syntax: `.items`) can be used to access `Card` data more directly and work with this data. It returns a list (`List` data type) of `FormData` objects:

```
FS_CATALOG_VAR.items
```

In order to be able to identify and output the value of a certain input component (`FormField`) in this list for a snippet definition, for example, both the identifier of the required input component and its position in the list must be specified:

```
FS_CATALOG_VAR.items[0].st_text
```

In this example, the value of “st_text” of the 1st entry in the FS_CATALOG component is identified with the “FS_CATALOG_VAR” identifier.

(This method is not only available in snippet definitions.)

FS_CATALOG: Access to snippets of entries (`getSnippets` method)

The new `getSnippets` method (in Bean syntax: `.snippets`) can now be used to access snippet values of the entries of an FS_CATALOG component. Instead of the identifier of the required input component (e.g., “st_text” for a CMS_INPUT_TEXT component), only the field of the snippet definition has to be specified when using `getSnippets`:

- `thumbnail` outputs the value of the “Thumbnail” field
- `header` outputs the value of the “Header” field
- `extract` outputs the value of the “Extract” field



of the snippet definition of the corresponding entry of the FS_CATALOG component.

The method returns a list (“List” data type). The required element of the list can be returned by specifying the position number (in square brackets, counting starts at 0).

Example:

```
FS_CATALOG_VAR.snippets[0].thumbnail  
FS_CATALOG_VAR.snippets[0].header  
FS_CATALOG_VAR.snippets[0].extract
```

The `FS_CATALOG_VAR.snippets[0].header` call returns the value from the field of the first entry of the FS_CATALOG component that is defined in the corresponding section or link template.

(This method is not only available in snippet definitions.)

The new `CatalogAccessor` data type has also been implemented in this context.

FS_INDEX: Access to snippets of a DataAccessPlugin (DAP, getSnippets method)

When an FS_INDEX input component is accessed via a `FormData` object, an `Index` type object containing a `Record` object for each entry in the index is returned. The `Index` object can be used both to manage the index entries and to create new entries.

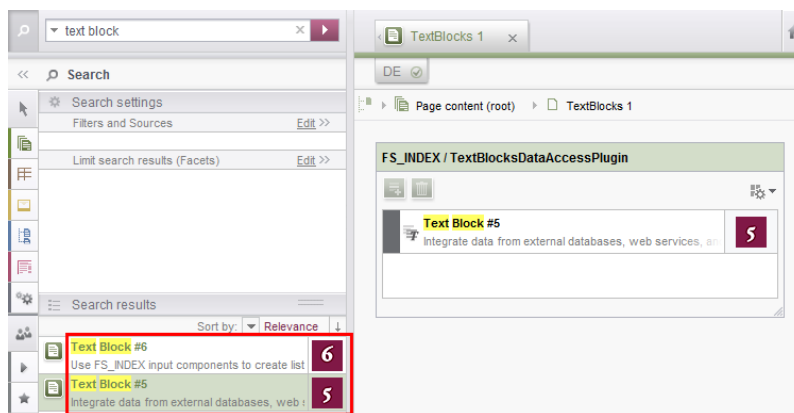
In template set and snippet definitions of templates, by contrast, when an FS_INDEX input component is accessed, an `IndexAccessor` type object is returned, which facilitates read access to the `string` identifiers of the entries saved in the component and to the data objects, which correspond to the entries and have been resolved via the `DataAccess` plug-in associated with the index component.

From FirstSpirit version 5.2R4, additional interfaces which are able to display these external data objects in the form of a snippet are available in this area (same as FS_CATALOG, see above). The following calls can be used within the snippet definition (notation):

```
FS_INDEX_VAR.snippets[0].thumbnail  
FS_INDEX_VAR.snippets[0].header  
FS_INDEX_VAR.snippets[0].extract
```

The `FS_INDEX_VAR.snippets[0]` call returns a snippet interface for the first DAP entry of the FS_INDEX component.





For more information, see *FirstSpirit Online Documentation*,

- “Template development / Template syntax / Data types / CatalogAccessor”
- “Template development / Forms / Input components / INDEX / Access to FS_INDEX”
- “Template development / Template syntax / Data types / IndexAccessor”

13 Input components: methods ".convert" and ".convert2" in FS_LIST

With FirstSpirit version 5.1 the attribute `convertEntities` of a form field may not have been respected inside a FS_LIST component. This could have been corrected using the functions `.convert` or `.convert2` in the corresponding template.

With FirstSpirit version 5.2 the behaviour in FS_LIST has been corrected, so that the usage of `.convert` and `.convert2` than led to a duplicate conversion in these cases.

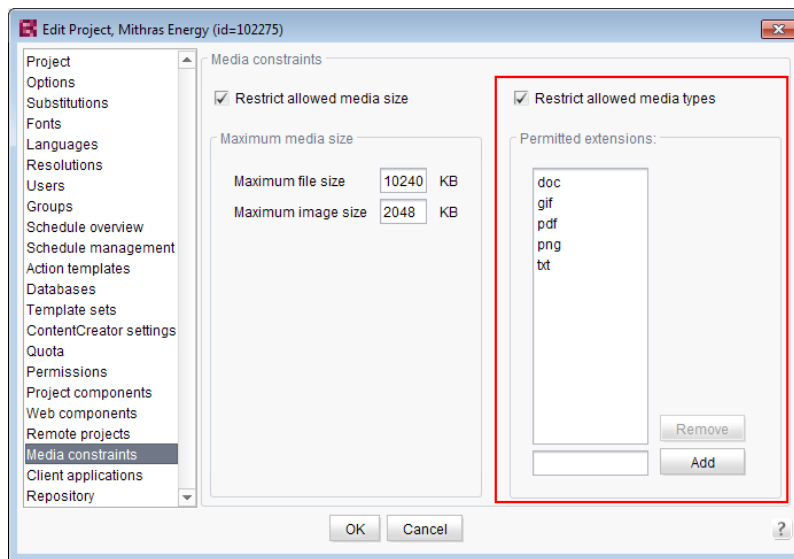
With FirstSpirit v5.2R4 this duplicate conversion will now be suppressed. These cases are logged in the generation log:

```
supressing duplicate conversion of field 'st_test'
```

14 Media: Optimized identification of file format of media uploaded via drag-and-drop

Upload of media into the Media store can be limited to certain file formats via the option “Restrict allowed media types” in project settings (“FirstSpirit ServerManager / Project settings / Media constraints”).





File format identification is done by both inspecting the file name extension and analyzing the file contents. This identification check has been optimized in FirstSpirit version 5.2R4.

Furthermore, when uploading media files into a project via drag-and-drop, a more differentiated error message will be shown if a file cannot be uploaded due to its file type, indicating whether the file type is not supported or not allowed.

For further information about this option, see

- *FirstSpirit Manual for Administrators*, chapter “Restrict allowed media types”

15 Module Development, Scripts, API: Update of Web Applications

In its default configuration, a FirstSpirit server uses the integrated Jetty software as HTTP server and servlet engine. If Jetty is deactivated (`INTERNAL_SERVLET_ENGINE=0` in the file `fs-server.conf`), the local FirstSpirit web directory was not updated during an in-place update of the FirstSpirit server software. If this web directory was also used by another web server, this caused the software versions used by this web server to become outdated. As of FirstSpirit version 5.2R4, during every update of the FirstSpirit server software, the necessary roll-out of the web applications it contains will take place even if Jetty is deactivated.

Moreover, entries of web applications in the file `fs-webapp.xml` whose directories do not exist will be ignored during server start-up. This does not affect FirstSpirit's own web applications.



For further information, see *FirstSpirit Manual for Administrators*, chapters

- “Web server configuration (fs-webapp.xml)”
- “Web server”

16 Module development, scripts, API: Individualizing the global FirstSpirit web applications

FirstSpirit builds on the concept of modular extensibility by customers and partners. This means that the FirstSpirit standard functions can be adjusted relatively easily to the specific requirements of the projects in question by means of individual, project-specific enhancements (such as input components, services, applications).

Previously, configurable instances of the FirstSpirit web applications that were local to the project had to be created for these individual enhancements. This is still possible.

With FirstSpirit version 5.2R4, however, it is also possible to adapt the global FirstSpirit web applications (fs5root, fs5preview, fs5webedit, etc.) individually, significantly reducing the amount of memory needed, particularly in a corporate environment with many projects. This feature could be released on request in FirstSpirit version 5.2R3 via the e-Spirit Technical Support, with FirstSpirit version 5.2R4 this functionality can be used by default without any need for activation by the e-Spirit Technical Support.

For further information please see *FirstSpirit Manual for Administrators*,

- Chapter “Individualizing the FirstSpirit web applications”
- Chapter “Web applications”

17 Modules (Corporate Content): Editing multiple packages

The functionality “FirstSpirit Corporate Content” allows automatic distribution of content between different projects on a server.

Creation and maintenance of packages can be carried out via the link “Create or edit a package” or the icon



in the area “Corporate Content” in FirstSpirit SiteArchitect.

Previously, if a package was already opened for editing, the message “You are already editing package '[package name]'. Please close this package first.” When creating a new package, this message was displayed only after configuration of the package via the dialog “Create package” took place, and the new package was created regardless of this notification.

As of FirstSpirit version 5.2R4, this message will no longer be displayed. Instead, the newly created or loaded project will be displayed. If another package was loaded already, any modifications to that package will be saved automatically before the newly created or loaded package is displayed.

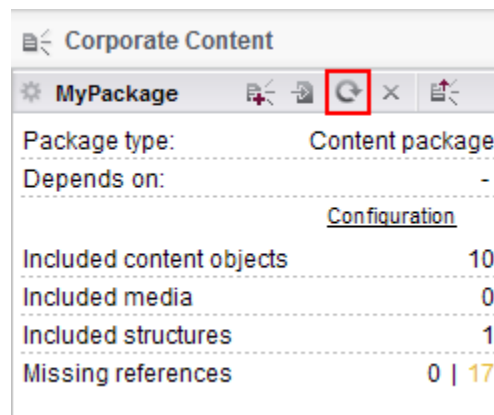
For further information, see *Documentation for FirstSpirit Corporate Content*, chapter “Creating or loading a package”.

18 Modules (Corporate Content): Refresh package display

The functionality “FirstSpirit Corporate Content” allows the automated distribution of templates and content among various projects on a server, such that content can be reused comfortably across FirstSpirit projects.

A package with its contents and properties can be shown in the area “Corporate Content” in “Multisite Management”.

Using the new icon (from FirstSpirit version 5.2.312) in the icon bar, the display of the current package can be refreshed:



FirstSpirit Corporate Content: Refresh package display



This may be necessary e.g. if an element contained within the package was afterwards modified to include a reference.

For further information, see Documentation about “FirstSpirit CorporateContent”, chapter “Corporate Content (package store)”.

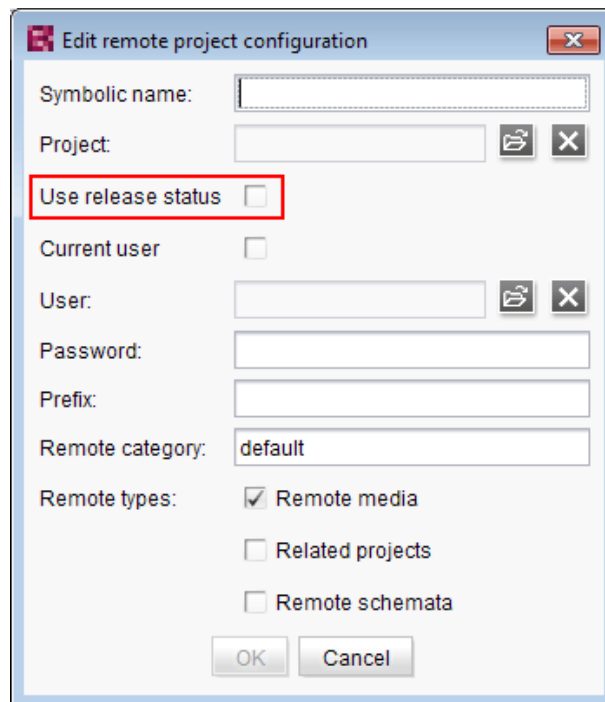
19 Modules (Corporate Media): Limiting selections from remote projects to objects with a release state

The functionality “FirstSpirit Corporate Media” enables access of elements between different projects on the same FirstSpirit server. In particular, a project (a “target project”) may reference elements stored in another project (a “remote project”), such that objects (e.g. media) that are stored in a central project may be used in many different projects. In this case, the target projects only reference the objects, which remain stored in the remote project.

Referencing objects in remote projects is primarily carried out using the input component FS_REFERENCE. Here, the type of the referenced object is irrelevant: references can be made to media (images and files), page references (Site Structure store), as well as to elements of any other store, including folders. In general, the selection dialog always shows selectable objects in their current state. When a project is generated, only the release states of objects will be included in generation.

From FirstSpirit version 5.2R4, the remote project configuration can be set to only allow selection of objects that have been released at some time. This setting can be configured in FirstSpirit Server-Manager, “Project properties / Remote projects”.





If the option “Use release state” is **activated**, the selection dialog will only show objects which have been released at least once. If such an object has been modified after the most recent release, the selection dialog and the preview will show the object in its current state, generation will, however, use the data of the object's most recent release state.

If the option is **deactivated**, the selection dialog will also show objects which have never been released. During generation, this may lead to invalid references and error messages in the generation log that will indicate such invalid references. Using the parameter `autoReleaseAfterUpload` in association with `upload`, media, which are uploaded via the input component `FS_REFERENCE`, can automatically be released, e.g.

```
<FS_REFERENCE name="st_reference" upload="yes">
  <LANGINFOS>
    <LANGINFO lang="*" label="Remote project"/>
  </LANGINFOS>
  <PROJECTS>
    <REMOTE name="remote" autoReleaseAfterUpload="yes"/>
  </PROJECTS>
</FS_REFERENCE>
```

For further information, see



- *FirstSpirit Manual for Administrators*, chapter “Remote projects”
- *FirstSpirit Online Documentation*, “Template development / Forms / Input components / REFERENCE”
- *Documentation for FirstSpirit Corporate Media*
- *Documentation for FirstSpirit SiteArchitect*, chapter “Reference selection (FS_REFERENCE)”
- *FirstSpirit Manual for Editors (ContentCreator)*, “Editing the preview page / Standard input elements / Reference selection (FS_REFERENCE)”

20 Modules (FOP): Specify Standard Image Resolution

Apache FOP (“Formatting Objects Processor”) allows output of FirstSpirit content in PDF format. The support for Apache FOP in FirstSpirit is realized via a module: *fs-fop.fsm*.

Some image manipulation programs (e.g. Adobe Photoshop) do not specify “dpi” (dots per inch) settings in image files and potentially save files at a resolution of 96 dpi. By default, Apache FOP assumes a resolution of 72 dpi if the image file does not contain explicit resolution information (see also: <http://xmlgraphics.apache.org/fop/0.95/embedding.html>). This discrepancy can cause undesired rescaling of images which do not contain resolution information such that these images appear blurry.

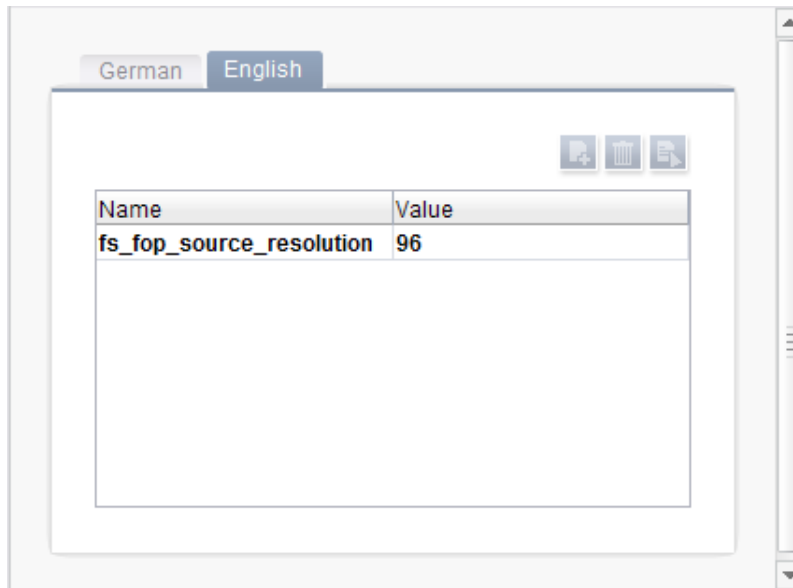
As of FirstSpirit version 5.2R4, the structure variable (“Site Structure store / Menu level / Variables”)

```
fs_fop_source_resolution
```

specifies the default image resolution for Apache FOP:

- If the variable is not explicitly set, an image resolution of 72 dpi will be used.
- In order to explicitly set a different default resolution (e.g. 96 dpi), the desired menu level must contain a variable, named as shown above, with the desired value, e.g.





For further information about the definition and evaluation of structure variables, see *FirstSpirit Online Documentation*, “Template development / Variables / Definition and output / in menu levels”.

21 Modules: Distribution of FirstSpirit web applications as modules (.fsm)

The global web applications included in FirstSpirit (fs5root, fs5preview, fs5webedit, ...) are now provided as FirstSpirit modules (FSM files) - previously, these were provided as Zip files. This change supports a unified distribution mechanism and requires no manual configuration of a FirstSpirit server and/or FirstSpirit projects.

22 SiteArchitect: Optimized keyboard control for consideration of pages and sections in generation

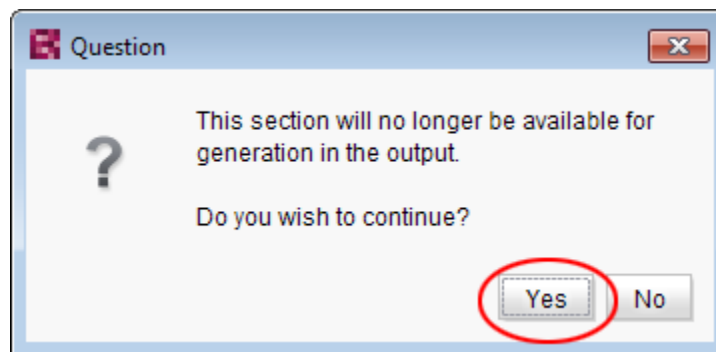
In the Page Content store, pages and sections can be configured with the following options:

- (Pages) “Page is completely translated to this language”: Depending on project settings, the page's specific project language version for which this option is set will be generated or not.
- (Sections) “include this section in the output”: During generation, the section's specific project language version for which this option is set will be rendered on the page or not.



These settings can be changed for a specific project language by toggling the checkbox on that language's tab in the workspace area of an element that is in edit mode.

The confirmation dialog which appears after toggling such a checkbox (e.g. “This section will no longer be available for generation in the output. Do you wish to continue?”) used to use “No” as its default answer. In order to support a more efficient editorial process, starting with FirstSpirit version 5.2R4, this dialog's default answer will be “Yes”.



With this change, the confirmation dialog can generally be confirmed by pressing either `Enter` or `Space` on the keyboard.

For further information about these functionalities, see *Documentation for FirstSpirit SiteArchitect*,

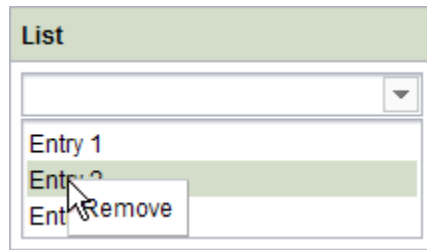
- chapter “Settings at page level”
- chapter “Settings at section level”

23 SiteArchitect: Optimized keyboard control of CMS_INPUT_LIST

Using the multiple selection component CMS_INPUT_LIST, a user can select from a set of values specified by project developers.

Until now, selected entries could only be removed from the list via the context menu:





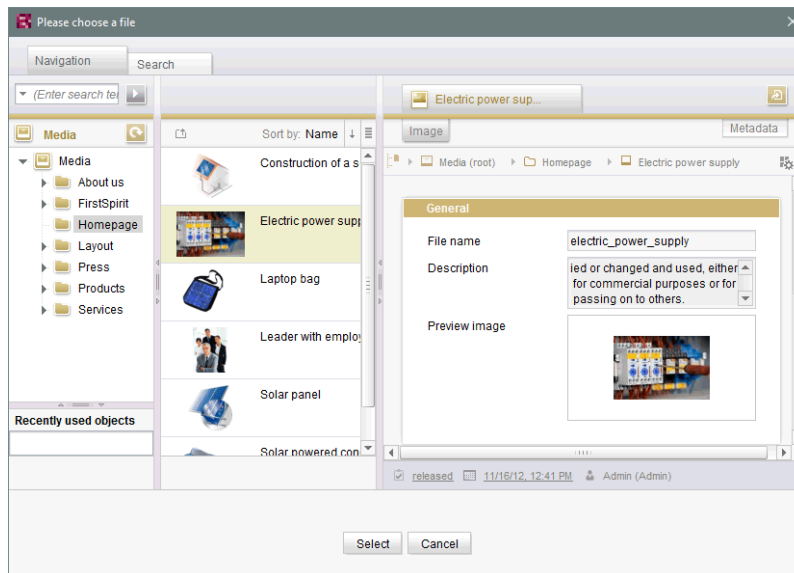
As of FirstSpirit 5.2R4, entries can now be removed using the keyboard shortcut **Del**.

For further information about CMS_INPUT_LIST, see

- *Documentation for FirstSpirit SiteArchitect*, chapter “Multiple selection list (CMS_INPUT_LIST)”
- *FirstSpirit Online Documentation*, “Template development / Forms / Input components / LIST”

24 SiteArchitect: Revised selection dialog and opening new workspaces

The selection dialogs in SiteArchitect (for example input components FS_REFERENCE, FS_DATASET) offer navigation and search options for quickly locating the objects that are to be referenced, e.g., images and files from the media store or page references from the site store.



With FirstSpirit version 5.2R4, the selected object can now be opened in a new workspace via the





icon. The notification “The element 'xyz' has been opened in a new workspace.” is displayed. Moreover, new workspaces are now opened on the right of the current workspace for better orientation, especially when working with a large number of workspaces (for example icons



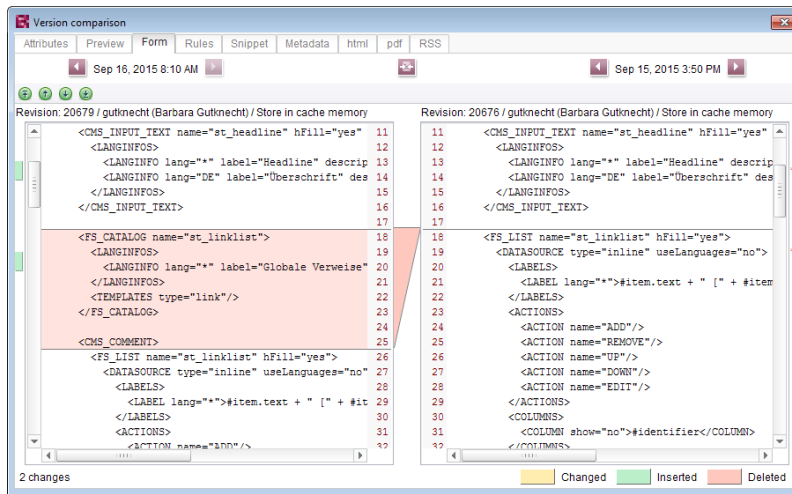
and functions “Display in new workspace”, “Extras / View Template”, “View current / View release”). Previously, new workspaces were always opened on the far right (in last position).

For more information please refer to *Documentation for FirstSpirit SiteArchitect*, Chapter “Selection dialogs”.

25 SiteArchitect: Selection of revisions for merge

All project data in a FirstSpirit project possess a revision history that may be used to trace changes of data over time. Based upon this historical data, changes made to two revisions of the same object may be compared using a difference visualization. To do so, two of an object's revisions that should be compared are selected in the “Version history” dialog (**Ctrl** + **H** or context menu entry “Version history”), and a click on the “Compare” button will display a difference visualization of the two revisions, named “Version comparison”. In this “Version comparison” dialog, data of the two compared revisions may be merged:





Functionality "Merge" in version comparison

Until now, the “Merge” functionality (in “Version comparison” dialogs, e.g. the button



for template elements) was available on almost all tabs (depending on the specific element type: “Attributes”, “Child list”, “Metadata”, “Variables”, “Form”, “Rules”, “Snippets”, template sets). A merge could potentially be used to modify system information (tabs “Attributes”, “Child list”). In order to prevent modification of such system information, FirstSpirit version 5.2R4 and later versions restrict availability of merge functionality as follows:

- **Tab “Child list”:** merge functionality is **not available**
- **Tab “Attributes”:** merge functionality is **only available to server and super administrators**

Thus, a user possessing the appropriate privileges will continue to be able to modify attributes of an element.

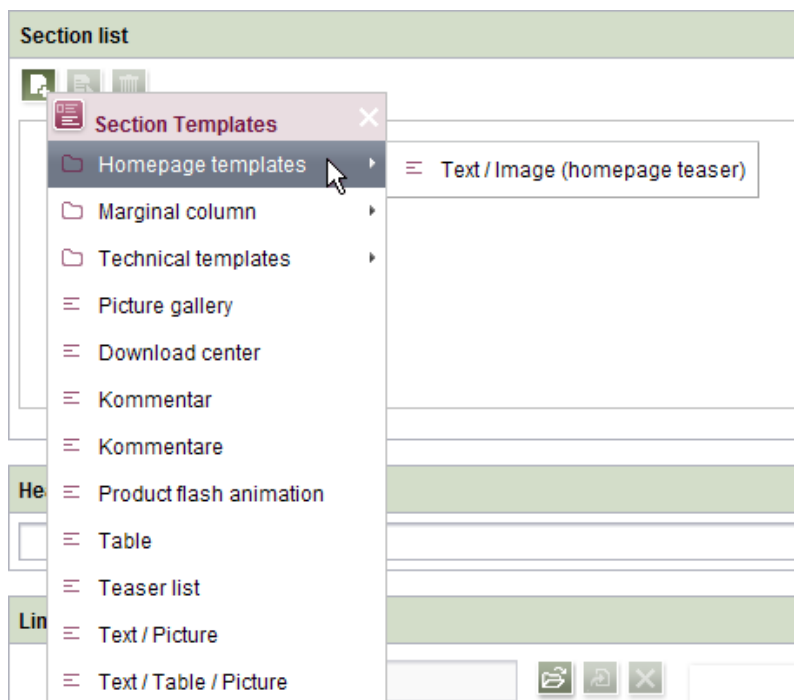
For further information, see *FirstSpirit Online Documentation*, page “Templates (basics) / Basics / Functions via context menus / Version history / Compare”.



26 SiteArchitect: Simplified Creation of Entries in FS_CATALOG

The input component FS_CATALOG allows creation of lists with sections or links such that editors may maintain several sections or links, respectively, within a single input component.

In SiteArchitect, if more than one section or link template were available, selection of a template for a new entry was done via a dialog. In FirstSpirit version 5.2R3, selection of a template for a new entry is now done via a pop-up menu (analogous to FS_LIST, `<PARAM name="select-ui">list</PARAM>`) from which the desired template may be selected:



If the FS_CATALOG input component is not configured to limit the set of allowed templates (i.e. no **TEMPLATE** tags are defined within the **TEMPLATES** tag in the component's configuration) or if more than 21 allowed templates are defined, the template selection pop-up will also display a partial folder hierarchy of the Templates store, such that all folders between the Templates store root and individual, allowed templates are shown. The pop-up menu may be closed by either clicking on its title bar or the "Close" icon or by pressing `ESC`.



If the FS_CATALOG input component is configured to allow only one template (i.e. only one **TEMPLATE** tag is defined within the **TEMPLATES** tag in the component's configuration), the template selection pop-up will not appear, and the new entry will automatically be created using this template.

For further information about FS_CATALOG, see

- *FirstSpirit Online Documentation*, “Template development / Forms / Input components / CATALOG”
- *Documentation for FirstSpirit SiteArchitect*, chapter “Catalog (FS_CATALOG)”

27 System: Integrated Software

With FirstSpirit 5.2R4, the following, internally used software has been updated:

- **Java Runtime Environment** (“JRE”, included in FirstSpirit Launcher)
Update from version 1.8.0_31 to 1.8.0_92
- **ASM** (Library for analyzing and modifying Java bytecode)
Update from version 3.1 to 5.1
(improved interoperability between modules, which are developed for Java 8, and FirstSpirit)
- **Apache Derby** (integrated database for testing purposes)
Update from version 10.11.1.1 to 10.12.1.1



As before, use for production purposes is not recommended!



Note: Use of Derby databases prohibits in-place **downgrades** to FirstSpirit version 5.2R3 or older. Error message after downgrade:

```
ERROR XSLAN: Database at [path] has an incompatible format with the
current version of the software. The database was created by or upgraded
by version 10.12.
```

Workaround: Export with FirstSpirit version 5.2R4 and import into a FirstSpirit server running version 5.2R3.

- **Eclipse Jetty** (integrated web server)



Update from version 9.2.9 to 9.2.15

Furthermore, security improvements have been undertaken concerning the default configuration.



As before, use for production purposes is not recommended!

28 Overview

ID	Description	Categories
140134	Restoring a deleted dataset with the input component FS_LIST (DATABASE type) may have failed with an error message.	Input Components, SiteArchitect
144895	Improved editing of multiple packages. Further information can be found in chapter “Modules (Corporate Content): Editing multiple packages”.	Corporate Content, Developer, Modules, SiteArchitect
151301	In the functionality “FirstSpirit CorporateContent”, optimized update behavior of content in entries of the input component FS_LIST (type INLINE).	Corporate Content
157715	If certain prerequisites were met, erroneous behavior could occur when creating a table template after integrating an external database.	Database, Table templates
160781	In very rare cases, when using server-side release after move operations, already released objects could not be found.	Release
161657	The selection dialog (for example at FS_REFERENCE and FS_DATASET) has got a new icon. This can be used for opening the selected object in a new workspace. Additionally, the position of opening working spaces has been optimized. Further information can be found in chapter “SiteArchitect: Revised selection dialog and opening new workspaces”.	Editor, SiteArchitect
162786	In very rare cases, erroneous behavior could occur during project export.	Project export / import



ID	Description	Categories
165793	In ContentCreator, optimized performance when selecting media or page references in the input component FS_REFERENCE.	ContentCreator, Input Components, Performance
167345	Optimized search.	ContentCreator, Search
167686	When adding folders to the Media store using drag-and-drop, the folders' display names will now automatically be set.	Media Store, SiteArchitect
169828	When indexing individual datasets via script from within a schedule task using the method <code>rebuildSearchIndex(IDProvider element)</code> of the interface <code>ProjectStorage</code> (Access API, package <code>de.espirit.firstspirit.access.admin</code>), occasionally, individual datasets were not correctly indexed.	FirstSpirit API, Server Administrator, Tasks
170093	You can use the method <code>getModifiedProjectProperties()</code> of the interface <code>ImportOperation.Result</code> (FirstSpirit Developer API, package <code>de.espirit.firstspirit.store.access.nexport.operation</code>) which has been introduced with FirstSpirit version 5.2R4, to identify if and which type of project settings were imported (for example template sets). Further information can be found in chapter "External Synchronization: New method "getModifiedProjectProperties" returns imported project properties".	External synchronization
170628	Optimized selection dialog of the input component FS_LIST (type DATABASE).	Input Components, SiteArchitect
171052	In external synchronization, optimized content of the file <code>Info.txt</code> for media. This file no longer contains resolution information, which is part of global project properties.	External synchronization
172243	Resource limit settings (<i>ulimit</i>) now remain unchanged when the FirstSpirit server is started.	FirstSpirit Administrator
173711	Improved performance of importing media with many resolutions.	Content Transport
173805	Simplified creation of new entries in FS_CATALOG in SiteArchitect.	Editor, Input Components



ID	Description	Categories
	Further information can be found in chapter “SiteArchitect: Simplified Creation of Entries in FS_CATALOG”.	
174484	Optimized the selection view in the selection dialog (tab “Selection”) for the input component FS_LIST.	Input Components, SiteArchitect
174865	Optimized visualization of elements which are included in a CorporateContent package.	Corporate Content, SiteArchitect
175039	The function “Show usages” on an element could lead to errors when the referenced objects came from a remote project and the user had no rights in that project.	Permissions, SiteArchitect
175523	In “External Synchronization”, improved handling of invalid form elements and erroneous rule definitions.	External synchronization
178279	Editing referenced datasets in nested FS_LIST (type DATABASE) input components could lead to erroneous behavior.	Input Components, SiteArchitect
178858	When using the functionality “External Synchronization”, the preview page of a template was erroneously not considered after import.	External synchronization
179095	Improved indexing of files with file name extensions “html”, “json”, and “php”.	Indexing, Search
179618 185510	In the input component CMS_INPUT_COMBOBOX, input of custom values (parameter <code>editable="yes"</code>) could lead to erroneous behavior.	Input Components
179812	Optimized thumbnail display during search in the selection dialog of the input component FS_INDEX.	Input Components, SiteArchitect
179884 173188 187062	In FirstSpirit version 5.2R4, updated internally used software. Further information can be found in chapter “System: Integrated Software”.	Database, Integrated software, Launcher, Security, Server Administrator
179963	Improved stability of project repository conversion.	Database, FirstSpirit Administrator, Server-Manager
180073	Improved the process of populating an FS_REFERENCE input component via drag and drop using a medium from the FirstSpirit clipboard.	Clipboard, Input Components, SiteArchitect



ID	Description	Categories
180214	In rare cases, the parameter <code>wrapper.pidfile</code> , set in the configuration file "fs-wrapper.conf", was not considered in Linux environments.	Server Administrator
180270	Added an icon for refreshing package display. Further information can be found in chapter "Modules (Corporate Content): Refresh package display".	Corporate Content
180755	The "Merge" functionality in some tabs of the "Version comparison" dialog is now no longer available or only available with appropriate user privileges. Further information can be found in chapter "SiteArchitect: Selection of revisions for merge".	Developer, SiteArchitect, Template Development, Version history
180966	Media restrictions: Improved identification of file format of media uploaded via drag-and-drop. Further information can be found in chapter "Media: Optimized identification of file format of media uploaded via drag-and-drop".	ContentCreator, Developer, Editor, Media Store, ServerManager, SiteArchitect
181081	In translation help, improved adoption of content within entries of FS_CATALOG input components.	Input Components, SiteArchitect
181367	Improvements in the area Template Wizard.	Template Wizard
181597	Improved performance when saving project settings ("SiteArchitect / Global settings") with large amounts of data.	Global settings
181806	Improved search in data sources.	ContentCreator, Search, SiteArchitect
181808	Improved consideration of access privileges on page templates.	ContentCreator, Permissions
181816	In the input component FS_LIST (type DATABASE), selection of datasets could lead to erroneous behavior if an associated query (tag <code>QUERY</code>) used the wildcard <code>%lang%</code> for language-dependent content for a column.	Content Store, SiteArchitect
182083	In ContentCreator forms, depending on the browser, display of an input component which references a data source that contains many	Content Store, Content-Creator, Developer,



ID	Description	Categories
	<p>datasets may be slow. As of FirstSpirit 5.2R4, the display is thus limited to 100 entries.</p> <p>Further information can be found in chapter “ContentCreator: Improved performance when displaying datasets in input components”.</p>	Editor, Input Components, Template Development
182120 185986	Improved import behavior in External Synchronization used via API.	External synchronization
182409	In external synchronization, media were erroneously not updated during import.	External synchronization
182441	Corrected standard release workflow.	Workflow
182781	The import logging contextual information are enhanced and should be more meaningful if the project export does contain erroneous metadata.	FirstSpirit Administrator, Project export / import
182868	<p>Toggling the options “Page is completely translated for this language” and “Generate this section in the output” on and off for pages and sections, respectively, now uses simplified keyboard controls.</p> <p>Further information can be found in chapter “SiteArchitect: Optimized keyboard control for consideration of pages and sections in generation”.</p>	Editor, Generation, Page Store, SiteArchitect
182976	Optimized positioning of the pop-up selection dialog for input components FS_LIST (type DATABASE) that use a query (tag QUERY).	Input Components, SiteArchitect
183128	In external synchronization (used via API), occasionally, not all objects in a folder structure were properly included in an export into the external file system.	External synchronization
183272	In ContentCreator, programmatic redirects could erroneously no longer be implemented.	ContentCreator
183350	During use of ContentCreator, a problem related to the user session could arise.	ContentCreator
183430 183873	During use of FirstSpirit ContentCreator, increased file handle usage could occur.	ContentCreator, FirstSpirit Administrator



ID	Description	Categories
183474	In rare cases, display issues with the Difference icon in modified areas could occur in the Difference view (page status, "Display all changes").	ContentCreator, Version history
183483	In the external synchronization user interface, improved status display for objects that will be imported.	External synchronization
183559 184287	<p>In order to support the new FirstSpirit Health Center functionality, the protocol for FirstSpirit web applications was modified and is now incompatible to that of previous versions. As in any upgrade and downgrade procedure, it is necessary to ensure that the FirstSpirit web applications are compatible with the FirstSpirit server software's version.</p> <p>Further information can be found in chapter "Administration: Modified protocol for FirstSpirit web applications".</p>	FirstSpirit Administrator, Module development, ServerManager
183591	<p>Optimized selection of the "Next editor" of a workflow in ContentCreator (using the magnifying glass or "Show more entries...").</p> <p>Further information can be found in chapter "ContentCreator: Selection dialog for next editor(s) of a workflow".</p>	ContentCreator, Editor, Workflow
183612	Dynamic forms in combination with preset and fallback values: The (partial) prepopulation of form fields with preset and fallback values via the dialog "Edit form defaults" in the Templates store is now possible again. Rule violations which would normally prevent saving a form (e.g. because a mandatory field in the form is empty) will be shown in the dialog "Edit form defaults" but will no longer prevent saving the form in this dialog.	Developer, Dynamic Forms, Input Components, SiteArchitect, Template Development, Template Store
183642	Erroneous behavior could occur during feature installation if the database schema in the target project contained more attributes than that in the source project.	Content Transport
183670	Saving the inner form of an FS_DATASET input component could lead to erroneous behavior.	Content Store, Input Components, SiteArchitect
183799	In the project properties of FirstSpirit ServerManager, a setting is now available that defines if selection from remote projects should be limited to objects which have been released at least once.	ContentCreator, Corporate Content, FirstSpirit Administrator,



ID	Description	Categories
	Further information can be found in chapter “Modules (Corporate Media): Limiting selections from remote projects to objects with a release state”.	Page Store, Server-Manager, SiteArchitect
183852	Optimized message board for display of long messages.	SiteArchitect
183861	When starting SiteArchitect using a URL without a domain, the cookies listed in the parameter “clientCookieNames” were erroneously not considered by the integrated Chrome browser.	Preview, SiteArchitect
183892	After deinstallation of the FOP module, the presentation channel was erroneously deleted on the server.	Modules, ServerManager
183978	Improved performance when using FirstSpirit in HTTP connection mode.	ServerManager, SiteArchitect
184074	An active server backup mode didn't respect the project registries.	Backup, FirstSpirit Administrator
184092	Optimized positioning of pop-up dialogs displayed via scripts.	SiteArchitect
184121	When adopting changes via translation help, erroneous behavior could occur.	SiteArchitect
184178	Optimized detection of modifications in the input component CMS_INPUT_PERMISSION.	Input Components
184179	Optimized calculation of privileges when editing metadata in ContentCreator.	ContentCreator, Permissions
184202	Improved display behavior of the dialog “Manage media” in ContentCreator (menu entry “Media / Manage media”) after deleting an empty folder.	ContentCreator, Media Store
184205	In the Media store, the action “Delete” was erroneously available on a media element which was already in a workflow.	ContentCreator, Media Store, Workflow
184254	Due to optimizations of distribution mechanisms, the global web applications included in FirstSpirit (fs5root, fs5preview, fs5webedit, ...) are now provided as FirstSpirit modules (FSM files). Further information can be found in chapter “Modules: Distribution of FirstSpirit web applications as modules (.fsm)”.	FirstSpirit Administrator, Modules, Server Administrator, ServerManager



ID	Description	Categories
184259	Performance improvements in the Media store related to managing folders which contain many Media elements.	Media Store, SiteArchitect
184278 183395 183412 184940 188224	There is a new start page in FirstSpirit ServerMonitoring. This page visualizes clearly the hardware and software status of your local FirstSpirit Server as well as of all FirstSpirit Servers which can be reached on the network. Further information can be found in chapter "Administration: The new FirstSpirit Health Center".	FirstSpirit Administrator, License, ServerMonitoring, Sessions, Webstart
184340	During publication using FTP via a proxy server, erroneous behavior could occur.	FirstSpirit Administrator
184352	Optimized validation behavior related to language-independent input components.	Dynamic Forms, Input Components, SiteArchitect
184442	When exporting elements via External Synchronization using the FirstSpirit Developer API, the new method <code>setExportRelease(boolean)</code> in the interface <code>ExportOperation</code> (package <code>de.espirit.firstspirit.store.access.nexport.operation</code>) can be used to specify whether the release or the current state of selected elements should be exported. Further information can be found in chapter "External Synchronization: New method "setExportRelease" to specify whether the release or the current state of elements should be exported".	External synchronization
184446	In ContentCreator, use of the methods <code>getBrokerByProjectName(String)</code> and <code>getBrokerByProjectId(long)</code> in the interface <code>BrokerAgent</code> (Developer API, package <code>de.espirit.firstspirit.agency</code>) could lead to erroneous behavior.	ContentCreator, Developer, FirstSpirit API
184511	In the detailed view of version history, language tabs will now be shown in the same order as on pages in the Page Content store.	SiteArchitect, Version history
184520	From FirstSpirit version 5.2R4 onward, individual web app components can now also be added to global web apps.	Developer, Module development, ServerManager



ID	Description	Categories
	Further information can be found in chapter “Module development, scripts, API: Individualizing the global FirstSpirit web applications”.	
184598	After externally editing a medium, display in the integrated preview could lead to erroneous behavior.	Media Store, Preview, SiteArchitect
184620	Improved communication with the preview servlet.	Preview
185321		
184663	Corrected version information of the system modules “FirstSpirit ContentCreator” and “FirstSpirit Webapplications”.	Modules
184685	Improved display of ContentCreator splash screen.	ContentCreator
184844	Improved handling of URL parameters in internal preview.	Preview, SiteArchitect
185149	Improved performance of dataset selection via the input component FS_DATASET.	Input Components, SiteArchitect
185165	During transport with “External Synchronization” (via API), metadata information (created, updated) will now also be considered.	External synchronization
185246		
185218	During exports via external synchronization, elements below the root node will now also be considered so that deleted elements will now also be removed in the external file system.	External synchronization
185234	Information about elements that need to be deleted will now be considered during transport via “External Synchronization” (using the API).	External synchronization
185251	Optimized consideration of included project properties during transport using “External Synchronization” (via API).	External synchronization
185254	Optimized calculation of modified status in external synchronization.	External synchronization
185261	When using external synchronization via API, root folders (“Root”; e.g. in the Media or Page Content store) were not deleted if they were no longer included in the next export's set of elements.	External synchronization
185267	In FirstSpirit ServerManager, a web server of type “Generic” could erroneously not be installed in the “Web applications” settings of server or project properties.	ServerManager
185283	Optimized display of entries of FS_CATALOG input components in the “Translation help” dialog.	ContentCreator



ID	Description	Categories
185298	<p>Installation of a module with a too large <code>module.xml</code> file could lead to erroneous behavior.</p> <p>As of FirstSpirit 5.2R4, an error message such as <code>Unable to read module descriptor 'XYZ'. Please verify that the file is readable and does not exceed the maximum size of 1048576 bytes.</code> will be output.</p>	Modules
185333	Optimized drag-and-drop behavior of data from a report onto an FS_INDEX input component.	ContentCreator, Input Components
185348	Improved interaction pattern of creating a new dataset.	Content Store, SiteArchitect
185385	In ContentCreator, erroneous behavior could occur after deleting a folder in the “Manage media” dialog.	ContentCreator, Media Store
185388	Improved display refresh behavior in the “Manage media” dialog after creating a new folder.	ContentCreator, Media Store
185523	In external synchronization, improved status calculation after external modification of media content.	External synchronization
185600	Security improvement related to the FirstSpirit start page.	Security
185683		
185640	In “External Synchronization”, the file <code>Import.txt</code> in the root export directory did not clearly identify the associated project.	External synchronization
185643	Exporting a project could lead to erroneous behavior.	Project export / import
185652	Improved change status calculation for objects when external synchronization is run after normal project export/import.	External synchronization
185829	Optimized memory usage of servlet engine.	ContentCreator
185911	<p>Improved removal of entries in CMS_INPUT_LIST input components using the <code>Del</code> key.</p> <p>Further information can be found in chapter “SiteArchitect: Optimized keyboard control of CMS_INPUT_LIST”.</p>	Input Components, SiteArchitect
185985	The external synchronisation did not take changes to page references into account.	External synchronization



ID	Description	Categories
186014	In a deeply nested FS_LIST (DATABASE type) adding an entry might have displayed an empty view for the new sub form.	Input Components, SiteArchitect
186041 186028	The method <code>setIgnoreEntities(boolean ignore)</code> of the interface <code>ImportOperation</code> (FirstSpirit Developer API, package <code>de.espirit.firstspirit.store.access.nexport.operation</code>) replaces the method <code>setCreateEntities</code> , which has been deprecated as of FirstSpirit version 5.2R4. The new method controls whether existing entities should be imported into the FirstSpirit project. Further information can be found in chapter “External Synchronization: New method "setIgnoreEntities" replaces "setCreateEntities"”.	External synchronization
186072	Automatic population of a data source using a script could lead to erroneous behavior.	Content Store, Modules
186099	Optimized memory usage when switching between many languages while editing a page.	SiteArchitect
186110 187353	Improved performance when loading forms in projects with many project languages.	SiteArchitect
186420	The standard image resolution for the FOP presentation channel can now be specified using the structure variable <code>fs_fop_source_resolution</code> . Further information can be found in chapter “Modules (FOP): Specify Standard Image Resolution”.	Developer, FirstSpirit Administrator, Media Store, Modules
186561	A request-release workflow that releases via the end state only, not defining an error state, will now be closed when releasing an object failed.	Workflow
186590	Improved the sorting possibilities in combination with full text search in the data source overview view.	Content Store, SiteArchitect
186691	Improved display of correction hints when form validation (rules) fails.	Dynamic Forms, SiteArchitect
186863	If the schedules “Repair References” and “Rebuild Index” had been configured for interactive execution, by mistake authorized persons were not able to execute them.	SiteArchitect, Tasks



ID	Description	Categories
186882	When searching within a data source, sometimes, datasets were not found by a user due to specific access right settings.	Content Store, Permissions, Search
187154	In the external synchronization process content for languages not included in the source project were skipped during the import into the target project.	External synchronization
187172 162113 187318	A number of additions have been made to the “Snippet” area with FirstSpirit version 5.2R4. Further information can be found in chapter “Input components: Extended snippet access for FS_INDEX and FS_CATALOG”.	ContentCreator, Developer, Input Components, SiteArchitect, Snippets, Template Development
187215	Switching between projects (Menu “Project / Switch Projects”) sometimes failed.	SiteArchitect
187251	While saving a page for which the user has no right to edit the metadata, it could lead to errors.	Permissions, SiteArchitect
187322	In rare cases the function “Display all changes” displayed no result.	ContentCreator
187374	The workflow for deleting elements did not respect the display logic script.	Workflow
187444	For the language-independent input component FS_LIST (DATABASE type), when switching between languages, newly added entries were not handled properly.	Input Components, SiteArchitect
187507	Web applications will now be updated automatically during every FirstSpirit server update. Further information can be found in chapter “Module Development, Scripts, API: Update of Web Applications”.	Developer, Module development, Modules, Server-Manager
187753	Duplicate conversion when using <code>.convert</code> and <code>.convert2</code> in FS_LIST will now be suppressed. Further information can be found in chapter “Input components: methods “.convert” and “.convert2” in FS_LIST”.	Developer, Input Components, Template Development, Template Store
187852	After changing a dataset a delta generation may have shown a failure.	Delta generation
188050	The GUI of the “External Synchronization” will be omitted with FirstSpirit 5.2R4.	Developer, External synchronization, FirstSpirit



ID	Description	Categories
	Further information can be found in chapter “External Synchronization: GUI will be omitted”.	API, FirstSpirit Administrator, SiteArchitect

29 Categories

29.1 Backup

ID	Description
184074	An active server backup mode didn't respect the project registries.

29.2 Clipboard

ID	Description
180073	Improved the process of populating an FS_REFERENCE input component via drag and drop using a medium from the FirstSpirit clipboard.

29.3 Content Store

ID	Description
181816	In the input component FS_LIST (type DATABASE), selection of datasets could lead to erroneous behavior if an associated query (tag <code>QUERY</code>) used the wildcard <code>%lang%</code> for language-dependent content for a column.
182083	In ContentCreator forms, depending on the browser, display of an input component which references a data source that contains many datasets may be slow. As of FirstSpirit 5.2R4, the display is thus limited to 100 entries. Further information can be found in chapter “ContentCreator: Improved performance when displaying datasets in input components”.
183670	Saving the inner form of an FS_DATASET input component could lead to erroneous behavior.
185348	Improved interaction pattern of creating a new dataset.



ID	Description
186072	Automatic population of a data source using a script could lead to erroneous behavior.
186590	Improved the sorting possibilities in combination with full text search in the data source overview view.
186882	When searching within a data source, sometimes, datasets were not found by a user due to specific access right settings.

29.4 Content Transport

ID	Description
173711	Improved performance of importing media with many resolutions.
183642	Erroneous behavior could occur during feature installation if the database schema in the target project contained more attributes than that in the source project.

29.5 ContentCreator

ID	Description
165793	In ContentCreator, optimized performance when selecting media or page references in the input component FS_REFERENCE.
167345	Optimized search.
180966	Media restrictions: Improved identification of file format of media uploaded via drag-and-drop. Further information can be found in chapter “Media: Optimized identification of file format of media uploaded via drag-and-drop”.
181806	Improved search in data sources.
181808	Improved consideration of access privileges on page templates.
182083	In ContentCreator forms, depending on the browser, display of an input component which references a data source that contains many datasets may be slow. As of FirstSpirit 5.2R4, the display is thus limited to 100 entries.



ID	Description
	Further information can be found in chapter “ContentCreator: Improved performance when displaying datasets in input components”.
183272	In ContentCreator, programmatic redirects could erroneously no longer be implemented.
183350	During use of ContentCreator, a problem related to the user session could arise.
183430 183873	During use of FirstSpirit ContentCreator, increased file handle usage could occur.
183474	In rare cases, display issues with the Difference icon in modified areas could occur in the Difference view (page status, “Display all changes”).
183591	<p>Optimized selection of the “Next editor” of a workflow in ContentCreator (using the magnifying glass or “Show more entries...”).</p> <p>Further information can be found in chapter “ContentCreator: Selection dialog for next editor(s) of a workflow”.</p>
183799	<p>In the project properties of FirstSpirit ServerManager, a setting is now available that defines if selection from remote projects should be limited to objects which have been released at least once.</p> <p>Further information can be found in chapter “Modules (Corporate Media): Limiting selections from remote projects to objects with a release state”.</p>
184179	Optimized calculation of privileges when editing metadata in ContentCreator.
184202	Improved display behavior of the dialog “Manage media” in ContentCreator (menu entry “Media / Manage media”) after deleting an empty folder.
184205	In the Media store, the action “Delete” was erroneously available on a media element which was already in a workflow.
184446	In ContentCreator, use of the methods <code>getBrokerByProjectName(String)</code> and <code>getBrokerByProjectId(long)</code> in the interface <code>BrokerAgent</code> (Developer API, package <code>de.espirit.firstspirit.agency</code>) could lead to erroneous behavior.
184685	Improved display of ContentCreator splash screen.
185283	Optimized display of entries of FS_CATALOG input components in the “Translation help” dialog.
185333	Optimized drag-and-drop behavior of data from a report onto an FS_INDEX input component.
185385	In ContentCreator, erroneous behavior could occur after deleting a folder in the “Manage media” dialog.



ID	Description
185388	Improved display refresh behavior in the “Manage media” dialog after creating a new folder.
185829	Optimized memory usage of servlet engine.
187172	A number of additions have been made to the “Snippet” area with FirstSpirit version 5.2R4.
162113	Further information can be found in chapter “Input components: Extended snippet access for FS_INDEX and FS_CATALOG”.
187318	
187322	In rare cases the function “Display all changes” displayed no result.

29.6 Corporate Content

ID	Description
144895	Improved editing of multiple packages. Further information can be found in chapter “Modules (Corporate Content): Editing multiple packages”.
151301	In the functionality “FirstSpirit CorporateContent”, optimized update behavior of content in entries of the input component FS_LIST (type INLINE).
174865	Optimized visualization of elements which are included in a CorporateContent package.
180270	Added an icon for refreshing package display. Further information can be found in chapter “Modules (Corporate Content): Refresh package display”.
183799	In the project properties of FirstSpirit ServerManager, a setting is now available that defines if selection from remote projects should be limited to objects which have been released at least once. Further information can be found in chapter “Modules (Corporate Media): Limiting selections from remote projects to objects with a release state”.



29.7 Database

ID	Description
157715	If certain prerequisites were met, erroneous behavior could occur when creating a table template after integrating an external database.
179884	In FirstSpirit version 5.2R4, updated internally used software.
173188	Further information can be found in chapter “System: Integrated Software”.
187062	
179963	Improved stability of project repository conversion.

29.8 Delta generation

ID	Description
187852	After changing a dataset a delta generation may have shown a failure.

29.9 Developer

ID	Description
144895	Improved editing of multiple packages. Further information can be found in chapter “Modules (Corporate Content): Editing multiple packages”.
180755	The “Merge” functionality in some tabs of the “Version comparison” dialog is now no longer available or only available with appropriate user privileges. Further information can be found in chapter “SiteArchitect: Selection of revisions for merge”.
180966	Media restrictions: Improved identification of file format of media uploaded via drag-and-drop. Further information can be found in chapter “Media: Optimized identification of file format of media uploaded via drag-and-drop”.



ID	Description
182083	<p>In ContentCreator forms, depending on the browser, display of an input component which references a data source that contains many datasets may be slow. As of FirstSpirit 5.2R4, the display is thus limited to 100 entries.</p> <p>Further information can be found in chapter “ContentCreator: Improved performance when displaying datasets in input components”.</p>
183612	<p>Dynamic forms in combination with preset and fallback values: The (partial) prepopulation of form fields with preset and fallback values via the dialog “Edit form defaults” in the Templates store is now possible again. Rule violations which would normally prevent saving a form (e.g. because a mandatory field in the form is empty) will be shown in the dialog “Edit form defaults” but will no longer prevent saving the form in this dialog.</p>
184446	<p>In ContentCreator, use of the methods <code>getBrokerByProjectName(String)</code> and <code>getBrokerByProjectId(long)</code> in the interface <code>BrokerAgent</code> (Developer API, package <code>de.espirit.firstspirit.agency</code>) could lead to erroneous behavior.</p>
184520	<p>From FirstSpirit version 5.2R4 onward, individual web app components can now also be added to global web apps.</p> <p>Further information can be found in chapter “Module development, scripts, API: Individualizing the global FirstSpirit web applications”.</p>
186420	<p>The standard image resolution for the FOP presentation channel can now be specified using the structure variable <code>fs_fop_source_resolution</code>.</p> <p>Further information can be found in chapter “Modules (FOP): Specify Standard Image Resolution”.</p>
187172	<p>A number of additions have been made to the “Snippet” area with FirstSpirit version 5.2R4.</p>
162113	<p>Further information can be found in chapter “Input components: Extended snippet access for FS_INDEX and FS_CATALOG”.</p>
187318	
187507	<p>Web applications will now be updated automatically during every FirstSpirit server update.</p> <p>Further information can be found in chapter “Module Development, Scripts, API: Update of Web Applications”.</p>
187753	<p>Duplicate conversion when using <code>.convert</code> and <code>.convert2</code> in FS_LIST will now be suppressed.</p>



ID	Description
	Further information can be found in chapter “Input components: methods ".convert" and ".convert2" in FS_LIST”.
188050	The GUI of the “External Synchronization” will be omitted with FirstSpirit 5.2R4. Further information can be found in chapter “External Synchronization: GUI will be omitted”.

29.10 Dynamic Forms

ID	Description
183612	Dynamic forms in combination with preset and fallback values: The (partial) prepopulation of form fields with preset and fallback values via the dialog “Edit form defaults” in the Templates store is now possible again. Rule violations which would normally prevent saving a form (e.g. because a mandatory field in the form is empty) will be shown in the dialog “Edit form defaults” but will no longer prevent saving the form in this dialog.
184352	Optimized validation behavior related to language-independent input components.
186691	Improved display of correction hints when form validation (rules) fails.

29.11 Editor

ID	Description
161657	The selection dialog (for example at FS_REFERENCE and FS_DATASET) has got a new icon. This can be used for opening the selected object in a new workspace. Additionally, the position of opening working spaces has been optimized. Further information can be found in chapter “SiteArchitect: Revised selection dialog and opening new workspaces”.
173805	Simplified creation of new entries in FS_CATALOG in SiteArchitect. Further information can be found in chapter “SiteArchitect: Simplified Creation of Entries in FS_CATALOG”.
180966	Media restrictions: Improved identification of file format of media uploaded via drag-and-drop.



ID	Description
	Further information can be found in chapter “Media: Optimized identification of file format of media uploaded via drag-and-drop”.
182083	In ContentCreator forms, depending on the browser, display of an input component which references a data source that contains many datasets may be slow. As of FirstSpirit 5.2R4, the display is thus limited to 100 entries. Further information can be found in chapter “ContentCreator: Improved performance when displaying datasets in input components”.
182868	Toggling the options “Page is completely translated for this language” and “Generate this section in the output” on and off for pages and sections, respectively, now uses simplified keyboard controls. Further information can be found in chapter “SiteArchitect: Optimized keyboard control for consideration of pages and sections in generation”.
183591	Optimized selection of the “Next editor” of a workflow in ContentCreator (using the magnifying glass or “Show more entries...”). Further information can be found in chapter “ContentCreator: Selection dialog for next editor(s) of a workflow”.

29.12 External synchronization

ID	Description
170093	You can use the method <code>getModifiedProjectProperties()</code> of the interface <code>ImportOperation.Result</code> (FirstSpirit Developer API, package <code>de.espirit.firstspirit.store.access.nexport.operations</code>), which has been introduced with FirstSpirit version 5.2R4, to identify if and which type of project settings were imported (for example template sets). Further information can be found in chapter “External Synchronization: New method "getModified-ProjectProperties" returns imported project properties”.
171052	In external synchronization, optimized content of the file <code>Info.txt</code> for media. This file no longer contains resolution information, which is part of global project properties.



ID	Description
175523	In “External Synchronization”, improved handling of invalid form elements and erroneous rule definitions.
178858	When using the functionality “External Synchronization”, the preview page of a template was erroneously not considered after import.
182120 185986	Improved import behavior in External Synchronization used via API.
182409	In external synchronization, media were erroneously not updated during import.
183128	In external synchronization (used via API), occasionally, not all objects in a folder structure were properly included in an export into the external file system.
183483	In the external synchronization user interface, improved status display for objects that will be imported.
184442	<p>When exporting elements via External Synchronization using the FirstSpirit Developer API, the new method <code>setExportRelease(boolean)</code> in the interface <code>ExportOperation</code> (package <code>de.espirit.firstspirit.store.access.nexport.operations</code>) can be used to specify whether the release or the current state of selected elements should be exported.</p> <p>Further information can be found in chapter “External Synchronization: New method "setExportRelease" to specify whether the release or the current state of elements should be exported”.</p>
185165 185246	During transport with “External Synchronization” (via API), metadata information (created, updated) will now also be considered.
185218	During exports via external synchronization, elements below the root node will now also be considered so that deleted elements will now also be removed in the external file system.
185234	Information about elements that need to be deleted will now be considered during transport via “External Synchronization” (using the API).
185251	Optimized consideration of included project properties during transport using “External Synchronization” (via API).
185254	Optimized calculation of modified status in external synchronization.
185261	When using external synchronization via API, root folders (“Root”; e.g. in the Media or Page Content store) were not deleted if they were no longer included in the next export's set of elements.
185523	In external synchronization, improved status calculation after external modification of media content.



ID	Description
185640	In “External Synchronization”, the file <code>Import.txt</code> in the root export directory did not clearly identify the associated project.
185652	Improved change status calculation for objects when external synchronization is run after normal project export/import.
185985	The external synchronisation did not take changes to page references into account.
186041	The method <code>setIgnoreEntities(boolean ignore)</code> of the interface <code>ImportOperation</code> (FirstSpirit Developer API, package <code>de.espirit.firstspirit.store.access.nexport.operations</code>) replaces the method <code>setCreateEntities</code> , which has been deprecated as of FirstSpirit version 5.2R4. The new method controls whether existing entities should be imported into the FirstSpirit project.
186028	Further information can be found in chapter “External Synchronization: New method "setIgnoreEntities" replaces "setCreateEntities"”.
187154	In the external synchronization process content for languages not included in the source project were skipped during the import into the target project.
188050	The GUI of the “External Synchronization” will be omitted with FirstSpirit 5.2R4.
	Further information can be found in chapter “External Synchronization: GUI will be omitted”.

29.13 FirstSpirit API

ID	Description
169828	When indexing individual datasets via script from within a schedule task using the method <code>rebuildSearchIndex(IDProvider element)</code> of the interface <code>ProjectStorage</code> (Access API, package <code>de.espirit.firstspirit.access.admin</code>), occasionally, individual datasets were not correctly indexed.
184446	In <code>ContentCreator</code> , use of the methods <code>getBrokerByProjectName(String)</code> and <code>getBrokerByProjectId(long)</code> in the interface <code>BrokerAgent</code> (Developer API, package <code>de.espirit.firstspirit.agency</code>) could lead to erroneous behavior.
188050	The GUI of the “External Synchronization” will be omitted with FirstSpirit 5.2R4.
	Further information can be found in chapter “External Synchronization: GUI will be omitted”.



29.14 FirstSpirit Administrator

ID	Description
172243	Resource limit settings (<i>ulimit</i>) now remain unchanged when the FirstSpirit server is started.
179963	Improved stability of project repository conversion.
182781	The import logging contextual information are enhanced and should be more meaningful if the project export does contain erroneous metadata.
183430 183873	During use of FirstSpirit ContentCreator, increased file handle usage could occur.
183559 184287	In order to support the new FirstSpirit Health Center functionality, the protocol for FirstSpirit web applications was modified and is now incompatible to that of previous versions. As in any upgrade and downgrade procedure, it is necessary to ensure that the FirstSpirit web applications are compatible with the FirstSpirit server software's version. Further information can be found in chapter "Administration: Modified protocol for FirstSpirit web applications".
183799	In the project properties of FirstSpirit ServerManager, a setting is now available that defines if selection from remote projects should be limited to objects which have been released at least once. Further information can be found in chapter "Modules (Corporate Media): Limiting selections from remote projects to objects with a release state".
184074	An active server backup mode didn't respect the project registries.
184254	Due to optimizations of distribution mechanisms, the global web applications included in FirstSpirit (fs5root, fs5preview, fs5webedit, ...) are now provided as FirstSpirit modules (FSM files). Further information can be found in chapter "Modules: Distribution of FirstSpirit web applications as modules (.fsm)".
184278 183395 183412 184940 188224	There is a new start page in FirstSpirit ServerMonitoring. This page visualizes clearly the hardware and software status of your local FirstSpirit Server as well as of all FirstSpirit Servers which can be reached on the network. Further information can be found in chapter "Administration: The new FirstSpirit Health Center".
184340	During publication using FTP via a proxy server, erroneous behavior could occur.



ID	Description
186420	The standard image resolution for the FOP presentation channel can now be specified using the structure variable <code>fs_fop_source_resolution</code> . Further information can be found in chapter “Modules (FOP): Specify Standard Image Resolution”.
188050	The GUI of the “External Synchronization” will be omitted with FirstSpirit 5.2R4. Further information can be found in chapter “External Synchronization: GUI will be omitted”.

29.15 Generation

ID	Description
182868	Toggling the options “Page is completely translated for this language” and “Generate this section in the output” on and off for pages and sections, respectively, now uses simplified keyboard controls. Further information can be found in chapter “SiteArchitect: Optimized keyboard control for consideration of pages and sections in generation”.

29.16 Global settings

ID	Description
181597	Improved performance when saving project settings (“SiteArchitect / Global settings”) with large amounts of data.

29.17 Indexing

ID	Description
179095	Improved indexing of files with file name extensions “html”, “json”, and “php”.



29.18 Input Components

ID	Description
140134	Restoring a deleted dataset with the input component FS_LIST (DATABASE type) may have failed with an error message.
165793	In ContentCreator, optimized performance when selecting media or page references in the input component FS_REFERENCE.
170628	Optimized selection dialog of the input component FS_LIST (type DATABASE).
173805	Simplified creation of new entries in FS_CATALOG in SiteArchitect. Further information can be found in chapter “SiteArchitect: Simplified Creation of Entries in FS_CATALOG”.
174484	Optimized the selection view in the selection dialog (tab “Selection”) for the input component FS_LIST.
178279	Editing referenced datasets in nested FS_LIST (type DATABASE) input components could lead to erroneous behavior.
179618 185510	In the input component CMS_INPUT_COMBOBOX, input of custom values (parameter <code>editable="yes"</code>) could lead to erroneous behavior.
179812	Optimized thumbnail display during search in the selection dialog of the input component FS_INDEX.
180073	Improved the process of populating an FS_REFERENCE input component via drag and drop using a medium from the FirstSpirit clipboard.
181081	In translation help, improved adoption of content within entries of FS_CATALOG input components.
182083	In ContentCreator forms, depending on the browser, display of an input component which references a data source that contains many datasets may be slow. As of FirstSpirit 5.2R4, the display is thus limited to 100 entries. Further information can be found in chapter “ContentCreator: Improved performance when displaying datasets in input components”.
182976	Optimized positioning of the pop-up selection dialog for input components FS_LIST (type DATABASE) that use a query (tag <code>QUERY</code>).
183612	Dynamic forms in combination with preset and fallback values: The (partial) prepopulation of form fields with preset and fallback values via the dialog “Edit form defaults” in the Templates store is



ID	Description
	now possible again. Rule violations which would normally prevent saving a form (e.g. because a mandatory field in the form is empty) will be shown in the dialog “Edit form defaults” but will no longer prevent saving the form in this dialog.
183670	Saving the inner form of an FS_DATASET input component could lead to erroneous behavior.
184178	Optimized detection of modifications in the input component CMS_INPUT_PERMISSION.
184352	Optimized validation behavior related to language-independent input components.
185149	Improved performance of dataset selection via the input component FS_DATASET.
185333	Optimized drag-and-drop behavior of data from a report onto an FS_INDEX input component.
185911	Improved removal of entries in CMS_INPUT_LIST input components using the Del key. Further information can be found in chapter “SiteArchitect: Optimized keyboard control of CMS_INPUT_LIST”.
186014	In a deeply nested FS_LIST (DATABASE type) adding an entry might have displayed an empty view for the new sub form.
187172	A number of additions have been made to the “Snippet” area with FirstSpirit version 5.2R4.
162113	Further information can be found in chapter “Input components: Extended snippet access for FS_INDEX and FS_CATALOG”.
187318	
187444	For the language-independent input component FS_LIST (DATABASE type), when switching between languages, newly added entries were not handled properly.
187753	Duplicate conversion when using <code>.convert</code> and <code>.convert2</code> in FS_LIST will now be suppressed. Further information can be found in chapter “Input components: methods <code>.convert</code> and <code>.convert2</code> in FS_LIST”.

29.19 Integrated software

ID	Description
179884	In FirstSpirit version 5.2R4, updated internally used software.
173188	Further information can be found in chapter “System: Integrated Software”.
187062	



29.20 Launcher

ID	Description
179884	In FirstSpirit version 5.2R4, updated internally used software. Further information can be found in chapter “System: Integrated Software”.
173188	
187062	

29.21 License

ID	Description
184278	There is a new start page in FirstSpirit ServerMonitoring. This page visualizes clearly the hardware and software status of your local FirstSpirit Server as well as of all FirstSpirit Servers which can be reached on the network. Further information can be found in chapter “Administration: The new FirstSpirit Health Center”.
183395	
183412	
184940	
188224	

29.22 Media Store

ID	Description
167686	When adding folders to the Media store using drag-and-drop, the folders' display names will now automatically be set.
180966	Media restrictions: Improved identification of file format of media uploaded via drag-and-drop. Further information can be found in chapter “Media: Optimized identification of file format of media uploaded via drag-and-drop”.
184202	Improved display behavior of the dialog “Manage media” in ContentCreator (menu entry “Media / Manage media”) after deleting an empty folder.
184205	In the Media store, the action “Delete” was erroneously available on a media element which was already in a workflow.
184259	Performance improvements in the Media store related to managing folders which contain many Media elements.



ID	Description
184598	After externally editing a medium, display in the integrated preview could lead to erroneous behavior.
185385	In ContentCreator, erroneous behavior could occur after deleting a folder in the “Manage media” dialog.
185388	Improved display refresh behavior in the “Manage media” dialog after creating a new folder.
186420	The standard image resolution for the FOP presentation channel can now be specified using the structure variable <code>fs_fop_source_resolution</code> . Further information can be found in chapter “Modules (FOP): Specify Standard Image Resolution”.

29.23 Module development

ID	Description
183559 184287	In order to support the new FirstSpirit Health Center functionality, the protocol for FirstSpirit web applications was modified and is now incompatible to that of previous versions. As in any upgrade and downgrade procedure, it is necessary to ensure that the FirstSpirit web applications are compatible with the FirstSpirit server software's version. Further information can be found in chapter “Administration: Modified protocol for FirstSpirit web applications”.
184520	From FirstSpirit version 5.2R4 onward, individual web app components can now also be added to global web apps. Further information can be found in chapter “Module development, scripts, API: Individualizing the global FirstSpirit web applications”.
187507	Web applications will now be updated automatically during every FirstSpirit server update. Further information can be found in chapter “Module Development, Scripts, API: Update of Web Applications”.



29.24 Modules

ID	Description
144895	<p>Improved editing of multiple packages.</p> <p>Further information can be found in chapter “Modules (Corporate Content): Editing multiple packages”.</p>
183892	<p>After deinstallation of the FOP module, the presentation channel was erroneously deleted on the server.</p>
184254	<p>Due to optimizations of distribution mechanisms, the global web applications included in FirstSpirit (fs5root, fs5preview, fs5webedit, ...) are now provided as FirstSpirit modules (FSM files).</p> <p>Further information can be found in chapter “Modules: Distribution of FirstSpirit web applications as modules (.fsm)”.</p>
184663	<p>Corrected version information of the system modules “FirstSpirit ContentCreator” and “FirstSpirit Webapplications”.</p>
185298	<p>Installation of a module with a too large <code>module.xml</code> file could lead to erroneous behavior.</p> <p>As of FirstSpirit 5.2R4, an error message such as <code>Unable to read module descriptor 'XYZ'. Please verify that the file is readable and does not exceed the maximum size of 1048576 bytes.</code> will be output.</p>
186072	<p>Automatic population of a data source using a script could lead to erroneous behavior.</p>
186420	<p>The standard image resolution for the FOP presentation channel can now be specified using the structure variable <code>fs_fop_source_resolution</code>.</p> <p>Further information can be found in chapter “Modules (FOP): Specify Standard Image Resolution”.</p>
187507	<p>Web applications will now be updated automatically during every FirstSpirit server update.</p> <p>Further information can be found in chapter “Module Development, Scripts, API: Update of Web Applications”.</p>



29.25 Page Store

ID	Description
182868	<p>Toggling the options “Page is completely translated for this language” and “Generate this section in the output” on and off for pages and sections, respectively, now uses simplified keyboard controls.</p> <p>Further information can be found in chapter “SiteArchitect: Optimized keyboard control for consideration of pages and sections in generation”.</p>
183799	<p>In the project properties of FirstSpirit ServerManager, a setting is now available that defines if selection from remote projects should be limited to objects which have been released at least once.</p> <p>Further information can be found in chapter “Modules (Corporate Media): Limiting selections from remote projects to objects with a release state”.</p>

29.26 Performance

ID	Description
165793	In ContentCreator, optimized performance when selecting media or page references in the input component FS_REFERENCE.

29.27 Permissions

ID	Description
175039	The function “Show usages” on an element could lead to errors when the referenced objects came from a remote project and the user had no rights in that project.
181808	Improved consideration of access privileges on page templates.
184179	Optimized calculation of privileges when editing metadata in ContentCreator.
186882	When searching within a data source, sometimes, datasets were not found by a user due to specific access right settings.
187251	While saving a page for which the user has no right to edit the metadata, it could lead to errors.



29.28 Preview

ID	Description
183861	When starting SiteArchitect using a URL without a domain, the cookies listed in the parameter “clientCookieNames” were erroneously not considered by the integrated Chrome browser.
184598	After externally editing a medium, display in the integrated preview could lead to erroneous behavior.
184620	Improved communication with the preview servlet.
185321	
184844	Improved handling of URL parameters in internal preview.

29.29 Project export / import

ID	Description
162786	In very rare cases, erroneous behavior could occur during project export.
182781	The import logging contextual information are enhanced and should be more meaningful if the project export does contain erroneous metadata.
185643	Exporting a project could lead to erroneous behavior.

29.30 Release

ID	Description
160781	In very rare cases, when using server-side release after move operations, already released objects could not be found.

29.31 Search

ID	Description
167345	Optimized search.
179095	Improved indexing of files with file name extensions “html”, “json”, and “php”.



ID	Description
181806	Improved search in data sources.
186882	When searching within a data source, sometimes, datasets were not found by a user due to specific access right settings.

29.32 Security

ID	Description
179884	In FirstSpirit version 5.2R4, updated internally used software.
173188	Further information can be found in chapter “System: Integrated Software”.
187062	
185600	Security improvement related to the FirstSpirit start page.
185683	

29.33 Server Administrator

ID	Description
169828	When indexing individual datasets via script from within a schedule task using the method <code>rebuildSearchIndex(IDProvider element)</code> of the interface <code>ProjectStorage</code> (Access API, package <code>de.espirit.firstspirit.access.admin</code>), occasionally, individual datasets were not correctly indexed.
179884	In FirstSpirit version 5.2R4, updated internally used software.
173188	Further information can be found in chapter “System: Integrated Software”.
187062	
180214	In rare cases, the parameter <code>wrapper.pidfile</code> , set in the configuration file “fs-wrapper.conf”, was not considered in Linux environments.
184254	Due to optimizations of distribution mechanisms, the global web applications included in FirstSpirit (fs5root, fs5preview, fs5webedit, ...) are now provided as FirstSpirit modules (FSM files). Further information can be found in chapter “Modules: Distribution of FirstSpirit web applications as modules (.fsm)”.



29.34 ServerManager

ID	Description
179963	Improved stability of project repository conversion.
180966	<p>Media restrictions: Improved identification of file format of media uploaded via drag-and-drop.</p> <p>Further information can be found in chapter “Media: Optimized identification of file format of media uploaded via drag-and-drop”.</p>
183559 184287	<p>In order to support the new FirstSpirit Health Center functionality, the protocol for FirstSpirit web applications was modified and is now incompatible to that of previous versions. As in any upgrade and downgrade procedure, it is necessary to ensure that the FirstSpirit web applications are compatible with the FirstSpirit server software's version.</p> <p>Further information can be found in chapter “Administration: Modified protocol for FirstSpirit web applications”.</p>
183799	<p>In the project properties of FirstSpirit ServerManager, a setting is now available that defines if selection from remote projects should be limited to objects which have been released at least once.</p> <p>Further information can be found in chapter “Modules (Corporate Media): Limiting selections from remote projects to objects with a release state”.</p>
183892	After deinstallation of the FOP module, the presentation channel was erroneously deleted on the server.
183978	Improved performance when using FirstSpirit in HTTP connection mode.
184254	<p>Due to optimizations of distribution mechanisms, the global web applications included in FirstSpirit (fs5root, fs5preview, fs5webedit, ...) are now provided as FirstSpirit modules (FSM files).</p> <p>Further information can be found in chapter “Modules: Distribution of FirstSpirit web applications as modules (.fsm)”.</p>
184520	<p>From FirstSpirit version 5.2R4 onward, individual web app components can now also be added to global web apps.</p> <p>Further information can be found in chapter “Module development, scripts, API: Individualizing the global FirstSpirit web applications”.</p>
185267	In FirstSpirit ServerManager, a web server of type “Generic” could erroneously not be installed in the “Web applications” settings of server or project properties.



ID	Description
187507	Web applications will now be updated automatically during every FirstSpirit server update. Further information can be found in chapter “Module Development, Scripts, API: Update of Web Applications”.

29.35 ServerMonitoring

ID	Description
184278	There is a new start page in FirstSpirit ServerMonitoring. This page visualizes clearly the hardware and software status of your local FirstSpirit Server as well as of all FirstSpirit Servers which can be reached on the network. Further information can be found in chapter “Administration: The new FirstSpirit Health Center”.
183395	
183412	
184940	
188224	

29.36 Sessions

ID	Description
184278	There is a new start page in FirstSpirit ServerMonitoring. This page visualizes clearly the hardware and software status of your local FirstSpirit Server as well as of all FirstSpirit Servers which can be reached on the network. Further information can be found in chapter “Administration: The new FirstSpirit Health Center”.
183395	
183412	
184940	
188224	

29.37 SiteArchitect

ID	Description
140134	Restoring a deleted dataset with the input component FS_LIST (DATABASE type) may have failed with an error message.
144895	Improved editing of multiple packages.



ID	Description
	Further information can be found in chapter “Modules (Corporate Content): Editing multiple packages”.
161657	<p>The selection dialog (for example at FS_REFERENCE and FS_DATASET) has got a new icon. This can be used for opening the selected object in a new workspace. Additionally, the position of opening working spaces has been optimized.</p> <p>Further information can be found in chapter “SiteArchitect: Revised selection dialog and opening new workspaces”.</p>
167686	When adding folders to the Media store using drag-and-drop, the folders' display names will now automatically be set.
170628	Optimized selection dialog of the input component FS_LIST (type DATABASE).
174484	Optimized the selection view in the selection dialog (tab “Selection”) for the input component FS_LIST.
174865	Optimized visualization of elements which are included in a CorporateContent package.
175039	The function “Show usages” on an element could lead to errors when the referenced objects came from a remote project and the user had no rights in that project.
178279	Editing referenced datasets in nested FS_LIST (type DATABASE) input components could lead to erroneous behavior.
179812	Optimized thumbnail display during search in the selection dialog of the input component FS_INDEX.
180073	Improved the process of populating an FS_REFERENCE input component via drag and drop using a medium from the FirstSpirit clipboard.
180755	<p>The “Merge” functionality in some tabs of the “Version comparison” dialog is now no longer available or only available with appropriate user privileges.</p> <p>Further information can be found in chapter “SiteArchitect: Selection of revisions for merge”.</p>
180966	<p>Media restrictions: Improved identification of file format of media uploaded via drag-and-drop.</p> <p>Further information can be found in chapter “Media: Optimized identification of file format of media uploaded via drag-and-drop”.</p>
181081	In translation help, improved adoption of content within entries of FS_CATALOG input components.
181806	Improved search in data sources.



ID	Description
181816	In the input component FS_LIST (type DATABASE), selection of datasets could lead to erroneous behavior if an associated query (tag QUERY) used the wildcard %lang% for language-dependent content for a column.
182868	<p> toggling the options “Page is completely translated for this language” and “Generate this section in the output” on and off for pages and sections, respectively, now uses simplified keyboard controls.</p> <p> Further information can be found in chapter “SiteArchitect: Optimized keyboard control for consideration of pages and sections in generation”.</p>
182976	Optimized positioning of the pop-up selection dialog for input components FS_LIST (type DATABASE) that use a query (tag QUERY).
183612	Dynamic forms in combination with preset and fallback values: The (partial) prepopulation of form fields with preset and fallback values via the dialog “Edit form defaults” in the Templates store is now possible again. Rule violations which would normally prevent saving a form (e.g. because a mandatory field in the form is empty) will be shown in the dialog “Edit form defaults” but will no longer prevent saving the form in this dialog.
183670	Saving the inner form of an FS_DATASET input component could lead to erroneous behavior.
183799	<p> In the project properties of FirstSpirit ServerManager, a setting is now available that defines if selection from remote projects should be limited to objects which have been released at least once.</p> <p> Further information can be found in chapter “Modules (Corporate Media): Limiting selections from remote projects to objects with a release state”.</p>
183852	Optimized message board for display of long messages.
183861	When starting SiteArchitect using a URL without a domain, the cookies listed in the parameter “clientCookieNames” were erroneously not considered by the integrated Chrome browser.
183978	Improved performance when using FirstSpirit in HTTP connection mode.
184092	Optimized positioning of pop-up dialogs displayed via scripts.
184121	When adopting changes via translation help, erroneous behavior could occur.
184259	Performance improvements in the Media store related to managing folders which contain many Media elements.
184352	Optimized validation behavior related to language-independent input components.



ID	Description
184511	In the detailed view of version history, language tabs will now be shown in the same order as on pages in the Page Content store.
184598	After externally editing a medium, display in the integrated preview could lead to erroneous behavior.
184844	Improved handling of URL parameters in internal preview.
185149	Improved performance of dataset selection via the input component FS_DATASET.
185348	Improved interaction pattern of creating a new dataset.
185911	Improved removal of entries in CMS_INPUT_LIST input components using the <code>Del</code> key. Further information can be found in chapter "SiteArchitect: Optimized keyboard control of CMS_INPUT_LIST".
186014	In a deeply nested FS_LIST (DATABASE type) adding an entry might have displayed an empty view for the new sub form.
186099	Optimized memory usage when switching between many languages while editing a page.
186110 187353	Improved performance when loading forms in projects with many project languages.
186590	Improved the sorting possibilities in combination with full text search in the data source overview view.
186691	Improved display of correction hints when form validation (rules) fails.
186863	If the schedules "Repair References" and "Rebuild Index" had been configured for interactive execution, by mistake authorized persons were not able to execute them.
187172 162113 187318	A number of additions have been made to the "Snippet" area with FirstSpirit version 5.2R4. Further information can be found in chapter "Input components: Extended snippet access for FS_INDEX and FS_CATALOG".
187215	Switching between projects (Menu "Project / Switch Projects") sometimes failed.
187251	While saving a page for which the user has no right to edit the metadata, it could lead to errors.
187444	For the language-independent input component FS_LIST (DATABASE type), when switching between languages, newly added entries were not handled properly.
188050	The GUI of the "External Synchronization" will be omitted with FirstSpirit 5.2R4.



ID	Description
	Further information can be found in chapter “External Synchronization: GUI will be omitted”.

29.38 Snippets

ID	Description
187172	A number of additions have been made to the “Snippet” area with FirstSpirit version 5.2R4.
162113	
187318	Further information can be found in chapter “Input components: Extended snippet access for FS_INDEX and FS_CATALOG”.

29.39 Table templates

ID	Description
157715	If certain prerequisites were met, erroneous behavior could occur when creating a table template after integrating an external database.

29.40 Tasks

ID	Description
169828	When indexing individual datasets via script from within a schedule task using the method <code>rebuildSearchIndex(IDProvider element)</code> of the interface <code>ProjectStorage</code> (Access API, package <code>de.espirit.firstspirit.access.admin</code>), occasionally, individual datasets were not correctly indexed.
186863	If the schedules “Repair References” and “Rebuild Index” had been configured for interactive execution, by mistake authorized persons were not able to execute them.



29.41 Template Development

ID	Description
180755	<p>The “Merge” functionality in some tabs of the “Version comparison” dialog is now no longer available or only available with appropriate user privileges.</p> <p>Further information can be found in chapter “SiteArchitect: Selection of revisions for merge”.</p>
182083	<p>In ContentCreator forms, depending on the browser, display of an input component which references a data source that contains many datasets may be slow. As of FirstSpirit 5.2R4, the display is thus limited to 100 entries.</p> <p>Further information can be found in chapter “ContentCreator: Improved performance when displaying datasets in input components”.</p>
183612	<p>Dynamic forms in combination with preset and fallback values: The (partial) prepopulation of form fields with preset and fallback values via the dialog “Edit form defaults” in the Templates store is now possible again. Rule violations which would normally prevent saving a form (e.g. because a mandatory field in the form is empty) will be shown in the dialog “Edit form defaults” but will no longer prevent saving the form in this dialog.</p>
187172	<p>A number of additions have been made to the “Snippet” area with FirstSpirit version 5.2R4.</p>
162113	<p>Further information can be found in chapter “Input components: Extended snippet access for FS_INDEX and FS_CATALOG”.</p>
187318	
187753	<p>Duplicate conversion when using <code>.convert</code> and <code>.convert2</code> in FS_LIST will now be suppressed.</p> <p>Further information can be found in chapter “Input components: methods “.convert” and “.convert2” in FS_LIST”.</p>

29.42 Template Store

ID	Description
183612	<p>Dynamic forms in combination with preset and fallback values: The (partial) prepopulation of form fields with preset and fallback values via the dialog “Edit form defaults” in the Templates store is now possible again. Rule violations which would normally prevent saving a form (e.g. because a mandatory field in the form is empty) will be shown in the dialog “Edit form defaults” but will no longer prevent saving the form in this dialog.</p>



ID	Description
187753	Duplicate conversion when using <code>.convert</code> and <code>.convert2</code> in FS_LIST will now be suppressed. Further information can be found in chapter "Input components: methods <code>.convert</code> " and <code>.convert2</code> " in FS_LIST".

29.43 Template Wizard

ID	Description
181367	Improvements in the area Template Wizard.

29.44 Version history

ID	Description
180755	The "Merge" functionality in some tabs of the "Version comparison" dialog is now no longer available or only available with appropriate user privileges. Further information can be found in chapter "SiteArchitect: Selection of revisions for merge".
183474	In rare cases, display issues with the Difference icon in modified areas could occur in the Difference view (page status, "Display all changes").
184511	In the detailed view of version history, language tabs will now be shown in the same order as on pages in the Page Content store.

29.45 Webstart

ID	Description
184278	There is a new start page in FirstSpirit ServerMonitoring. This page visualizes clearly the hardware and software status of your local FirstSpirit Server as well as of all FirstSpirit Servers which can be reached on the network. Further information can be found in chapter "Administration: The new FirstSpirit Health Center".
183395	
183412	
184940	
188224	



29.46 Workflow

ID	Description
182441	Corrected standard release workflow.
183591	<p>Optimized selection of the “Next editor” of a workflow in ContentCreator (using the magnifying glass or “Show more entries...”).</p> <p>Further information can be found in chapter “ContentCreator: Selection dialog for next editor(s) of a workflow”.</p>
184205	In the Media store, the action “Delete” was erroneously available on a media element which was already in a workflow.
186561	A request-release workflow that releases via the end state only, not defining an error state, will now be closed when releasing an object failed.
187374	The workflow for deleting elements did not respect the display logic script.

