



# FirstSpirit™

*Unlock Your Content*

## FirstSpirit™ Release Notes

### FirstSpirit™ Version 5.2 Release 8

<b>Version</b>	<b>5.2.802</b>
<b>Status</b>	<b>RELEASED</b>
<b>Date</b>	<b>2017-04-28</b>
<b>Department</b>	FS-Core
<b>Copyright</b>	2017 <b>e-Spirit AG</b>
<b>File name</b>	Releasenotes_5.2.802_EN

#### **e-Spirit AG**

Stockholmer Allee 24  
44269 Dortmund | Germany

T +49 231 . 477 77-0  
F +49 231 . 477 77-499

[info@e-Spirit.com](mailto:info@e-Spirit.com)  
[www.e-Spirit.com](http://www.e-Spirit.com)

e-Spirit

## Table of contents

<b>1</b>	<b>ContentCreator</b> .....	<b>4</b>
1.1	Dynamically resizable report sidebar.....	4
<b>2</b>	<b>SiteArchitect</b> .....	<b>4</b>
2.1	Creating a section reference via context menu or keyboard shortcut.....	4
2.2	Repeating a search after erroneous input.....	4
<b>3</b>	<b>Overview</b> .....	<b>5</b>
<b>4</b>	<b>Categories</b> .....	<b>8</b>
4.1	Content Store.....	8
4.2	Content Transport.....	8
4.3	ContentCreator.....	8
4.4	Corporate Content.....	9
4.5	Dynamic Forms.....	9
4.6	Editor.....	9
4.7	External synchronization.....	10
4.8	FirstSpirit Administrator.....	10
4.9	Generation.....	10
4.10	Input Components.....	11
4.11	Isolated mode (BETA).....	11
4.12	Media Store.....	11



4.13	Reports.....	11
4.14	Repository.....	11
4.15	Search.....	12
4.16	ServerManager.....	12
4.17	SiteArchitect.....	12
4.18	Version history.....	13



## 1 ContentCreator

### 1.1 Dynamically resizable report sidebar

The width of the report sidebar may be adjusted by dragging the vertical divider bar using the mouse (left-click and hold). The selected width will be preserved if the report sidebar is closed and then reopened.

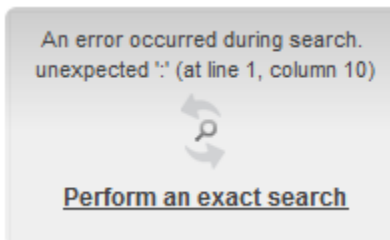
## 2 SiteArchitect

### 2.1 Creating a section reference via context menu or keyboard shortcut

A section reference can now also be created via the context menu entry “Paste as section reference” or via the keyboard shortcut **Ctrl + Alt + V**.

### 2.2 Repeating a search after erroneous input

If the search string used for a full-text search contains a special character that cannot be used in search, an error message will be displayed in the search results pane.



This error message now provides an opportunity to repeat the search by clicking **Perform an exact search**. In this repeat search, quotation marks will be placed around the search string, and an exact search will be performed.



### 3 Overview

ID	Description	Categories
100258	Optimized display of recently used objects from remote projects for input components that use selection dialogs for selection of references (FS_REFERENCE, CMS_INPUT_IMAGE_MAP, links...).	SiteArchitect
184607	Where rule definitions are concerned, error handling of incorrect entries inside the <SCHEDULE> tag has been optimized.	Dynamic Forms
185766	In the version history, it was possible in rare cases that the display of the contents of the columns “Editor” and “Comment” was swapped.	SiteArchitect, Version history
187934	In rare cases, the display of the “Edit image section” icon on media in the section area was erroneous.	ContentCreator
188915	<p>If the search string contains an unsupported special character, the search may be repeated as an exact search by clicking <b>Perform an exact search</b>.</p> <p>Further information can be found in chapter “SiteArchitect: Repeating a search after erroneous input”.</p>	Search, SiteArchitect
189128	Optimized interaction pattern in Media Management when the user does not have CAN_SEE privileges.	ContentCreator
190420	Previously, during an import via “FirstSpirit CorporateContent”, nodes in the tree structure were in some cases set to display the metadata icon even though “FirstSpirit CorporateContent” does not transport metadata. This was corrected in the current FirstSpirit version: now, the metadata icon will no longer be set at all after importing via “FirstSpirit CorporateContent”.	Corporate Content
190604	<p>A section reference can now also be created via the context menu entry “Paste as section reference” or via the keyboard shortcut <b>Ctrl + Alt + V</b>.</p> <p>Further information can be found in chapter “SiteArchitect: Creating a section reference via context menu or keyboard shortcut”.</p>	Editor, SiteArchitect
193131	When editing content, clicking in the integrated preview could lead to erroneous behavior of keyboard control.	SiteArchitect



ID	Description	Categories
193720	The report sidebar is now resizable.  Further information can be found in chapter “ContentCreator: Dynamically resizable report sidebar”.	ContentCreator, Reports
194868	When adding a table template to a feature, the schema node was erroneously not considered a required reference. This could lead to erroneous behavior when installing the feature.	Content Transport
195299	Optimized indexing performance.	SiteArchitect
195943	Optimized search for datasets in the selection dialog of the input component FS_LIST.	Input Components
196043	If a table template lacked definition of a preview page, refreshing the page could lead to an erroneous display in the preview.	ContentCreator
196465	Optimized detection of invalid references in the input component FS_REFERENCE.	SiteArchitect
196619	Optimized detection of duplicate module resources.	Isolated mode (BETA)
196695	Optimized detection of invalid references in the input component FS_REFERENCE.	ContentCreator
196743	Improved detection of rule infractions for links within the input components CMS_INPUT_LINK, CMS_INPUT_IMAGE_MAP, and CMS_INPUT_DOM.	Dynamic Forms, SiteArchitect
196747	During a metadata search, malfunctions could occur when entering search terms.	Search, SiteArchitect
196775	The version history for datasets has been optimized.	Content Store, SiteArchitect, Version history
197189	Improved identification of *.msg files (e-mails in Microsoft Outlook) when uploading files via drag-and-drop.	Media Store, SiteArchitect
197274	In rare cases, after changing the repository type from “Berkley DB Java Edition V5” to “Berkley DB Java Edition V3”, the conversion process may use more disk space than normal.	FirstSpirit Administrator, Repository



ID	Description	Categories
197406	Improved performance of client logging.	ServerManager, SiteArchitect
198078	In the input component FS_INDEX, dynamically populating a parameter in a query using rules could lead to erroneous behavior.	Dynamic Forms, SiteArchitect
198214	During generation of Advanced URLs, erroneous behavior could occur if a structure folder had a display name that contained a special character.	Generation
198269	In the input component CMS_INPUT_DOM, improved pasting of Word content from the clipboard.	ContentCreator
198303	Optimized persistence of fixed workspaces.	SiteArchitect
198365	When using the browser engine “Google Chrome” in the integrated preview, downloading a video in mp4 format could lead to erroneous behavior.	SiteArchitect
198512	In rare cases, erroneous behavior could occur when loading the project.	SiteArchitect
198533	Improved display of available resolutions in the input component CMS_INPUT_IMAGE_MAP.	ContentCreator
198763	In external synchronization, optimized the import of form default values.	External synchronization
198800	Closing a dialog that was defined via the interface <code>ShowFormDialogOperation</code> (package <code>de.espirit.firstspirit.ui.operations</code> , FirstSpirit Developer API) erroneously led to the entire page being refreshed.	ContentCreator
198973	Improvements related to signing of FirstSpirit JAR files.	FirstSpirit Administrator
198990	Default values were erroneously not taken into account when importing with external synchronization.	External synchronization
199097	If only parts of the Page Content or Site Structure stores were exported from a source project, this erroneously led to these parts always being imported anew in the target project.	External synchronization
199124	Optimized evaluation of the option “Extended logging” (menu “Extras”).	SiteArchitect



ID	Description	Categories
199159	In repeat imports, elements that are both in a released state and unchanged in the target project were erroneously imported anew.	External synchronization

## 4 Categories

### 4.1 Content Store

ID	Description
196775	The version history for datasets has been optimized.

### 4.2 Content Transport

ID	Description
194868	When adding a table template to a feature, the schema node was erroneously not considered a required reference. This could lead to erroneous behavior when installing the feature.

### 4.3 ContentCreator

ID	Description
187934	In rare cases, the display of the “Edit image section” icon on media in the section area was erroneous.
189128	Optimized interaction pattern in Media Management when the user does not have CAN_SEE privileges.
193720	The report sidebar is now resizable.  Further information can be found in chapter “ContentCreator: Dynamically resizable report sidebar”.
196043	If a table template lacked definition of a preview page, refreshing the page could lead to an erroneous display in the preview.
196695	Optimized detection of invalid references in the input component FS_REFERENCE.





ID	Description
198269	In the input component CMS_INPUT_DOM, improved pasting of Word content from the clipboard.
198533	Improved display of available resolutions in the input component CMS_INPUT_IMAGE_MAP.
198800	Closing a dialog that was defined via the interface <code>ShowFormDialogOperation</code> (package <code>de.espirit.firstspirit.ui.operations</code> , FirstSpirit Developer API) erroneously led to the entire page being refreshed.

## 4.4 Corporate Content

ID	Description
190420	Previously, during an import via “FirstSpirit CorporateContent”, nodes in the tree structure were in some cases set to display the metadata icon even though “FirstSpirit CorporateContent” does not transport metadata. This was corrected in the current FirstSpirit version: now, the metadata icon will no longer be set at all after importing via “FirstSpirit CorporateContent”.

## 4.5 Dynamic Forms

ID	Description
184607	Where rule definitions are concerned, error handling of incorrect entries inside the <code>&lt;SCHEDULE&gt;</code> tag has been optimized.
196743	Improved detection of rule infractions for links within the input components CMS_INPUT_LINK, CMS_INPUT_IMAGE_MAP, and CMS_INPUT_DOM.
198078	In the input component FS_INDEX, dynamically populating a parameter in a query using rules could lead to erroneous behavior.

## 4.6 Editor

ID	Description
190604	A section reference can now also be created via the context menu entry “Paste as section reference” or via the keyboard shortcut <code>Ctrl + Alt + V</code> .



ID	Description
	Further information can be found in chapter “SiteArchitect: Creating a section reference via context menu or keyboard shortcut”.

## 4.7 External synchronization

ID	Description
198763	In external synchronization, optimized the import of form default values.
198990	Default values were erroneously not taken into account when importing with external synchronization.
199097	If only parts of the Page Content or Site Structure stores were exported from a source project, this erroneously led to these parts always being imported anew in the target project.
199159	In repeat imports, elements that are both in a released state and unchanged in the target project were erroneously imported anew.

## 4.8 FirstSpirit Administrator

ID	Description
197274	In rare cases, after changing the repository type from “Berkley DB Java Edition V5” to “Berkley DB Java Edition V3”, the conversion process may use more disk space than normal.
198973	Improvements related to signing of FirstSpirit JAR files.

## 4.9 Generation

ID	Description
198214	During generation of Advanced URLs, erroneous behavior could occur if a structure folder had a display name that contained a special character.



## 4.10 Input Components

ID	Description
195943	Optimized search for datasets in the selection dialog of the input component FS_LIST.

## 4.11 Isolated mode (BETA)

ID	Description
196619	Optimized detection of duplicate module resources.

## 4.12 Media Store

ID	Description
197189	Improved identification of *.msg files (e-mails in Microsoft Outlook) when uploading files via drag-and-drop.

## 4.13 Reports

ID	Description
193720	The report sidebar is now resizable.  Further information can be found in chapter "ContentCreator: Dynamically resizable report sidebar".

## 4.14 Repository

ID	Description
197274	In rare cases, after changing the repository type from "Berkley DB Java Edition V5" to "Berkley DB Java Edition V3", the conversion process may use more disk space than normal.



## 4.15 Search

ID	Description
188915	<p>If the search string contains an unsupported special character, the search may be repeated as an exact search by clicking <b>Perform an exact search</b>.</p> <p>Further information can be found in chapter “SiteArchitect: Repeating a search after erroneous input”.</p>
196747	During a metadata search, malfunctions could occur when entering search terms.

## 4.16 ServerManager

ID	Description
197406	Improved performance of client logging.

## 4.17 SiteArchitect

ID	Description
100258	Optimized display of recently used objects from remote projects for input components that use selection dialogs for selection of references (FS_REFERENCE, CMS_INPUT_IMAGE_MAP, links...).
185766	In the version history, it was possible in rare cases that the display of the contents of the columns “Editor” and “Comment” was swapped.
188915	<p>If the search string contains an unsupported special character, the search may be repeated as an exact search by clicking <b>Perform an exact search</b>.</p> <p>Further information can be found in chapter “SiteArchitect: Repeating a search after erroneous input”.</p>
190604	<p>A section reference can now also be created via the context menu entry “Paste as section reference” or via the keyboard shortcut <b>Ctrl + Alt + V</b>.</p> <p>Further information can be found in chapter “SiteArchitect: Creating a section reference via context menu or keyboard shortcut”.</p>



ID	Description
193131	When editing content, clicking in the integrated preview could lead to erroneous behavior of keyboard control.
195299	Optimized indexing performance.
196465	Optimized detection of invalid references in the input component FS_REFERENCE.
196743	Improved detection of rule infractions for links within the input components CMS_INPUT_LINK, CMS_INPUT_IMAGEMAP, and CMS_INPUT_DOM.
196747	During a metadata search, malfunctions could occur when entering search terms.
196775	The version history for datasets has been optimized.
197189	Improved identification of *.msg files (e-mails in Microsoft Outlook) when uploading files via drag-and-drop.
197406	Improved performance of client logging.
198078	In the input component FS_INDEX, dynamically populating a parameter in a query using rules could lead to erroneous behavior.
198303	Optimized persistence of fixed workspaces.
198365	When using the browser engine “Google Chrome” in the integrated preview, downloading a video in mp4 format could lead to erroneous behavior.
198512	In rare cases, erroneous behavior could occur when loading the project.
199124	Optimized evaluation of the option “Extended logging” (menu “Extras”).

## 4.18 Version history

ID	Description
185766	In the version history, it was possible in rare cases that the display of the contents of the columns “Editor” and “Comment” was swapped.
196775	The version history for datasets has been optimized.

