



FirstSpirit™

Unlock Your Content

FirstSpirit™ Maintenance Build FirstSpirit™ Version 5.2 Release 5

Version	5.2.515
Status	Delta to 5.2.514
Date	2016-10-28
Department	FS-Core
Copyright	2016 e-Spirit AG
File name	Maintenancebuild_5.2.515_EN

e-Spirit AG

Stockholmer Allee 24
44269 Dortmund | Germany

T +49 231 . 477 77-0
F +49 231 . 477 77-499

info@e-Spirit.com
www.e-Spirit.com

e-Spirit

Table of contents

- 1 Administration..... 5**
 - 1.1 Improved stability when accessing FirstSpirit web applications on external web servers..... 5
 - 1.2 Server update: Improved schedule logging..... 5
- 2 Media..... 6**
 - 2.1 Recognition of file types when uploading media using drag-and-drop improved..... 6
- 3 Module Development, Scripts, API..... 6**
 - 3.1 Establishing connections via API in schedule task scripts..... 6
- 4 Modules (general)..... 8**
 - 4.1 Library dependencies added in FirstSpirit web applications..... 8
- 5 SiteArchitect / ContentCreator..... 8**
 - 5.1 Reports: Handling has been improved..... 8
- 6 SiteArchitect / ServerManager..... 9**
 - 6.1 Speeding up file selection from directory structure of the client workstation..... 9
- 7 Overview..... 10**
- 8 Categories..... 14**
 - 8.1 Archiving..... 14
 - 8.2 Content Store..... 14
 - 8.3 Content Transport..... 15



8.4	ContentCreator.....	15
8.5	Corporate Content.....	15
8.6	Database.....	16
8.7	Developer.....	16
8.8	Dynamic Forms.....	16
8.9	Editor.....	17
8.10	FirstSpirit API.....	17
8.11	FirstSpirit Administrator.....	18
8.12	FirstSpirit home page.....	18
8.13	Generation.....	19
8.14	Input Components.....	19
8.15	Media Store.....	19
8.16	Module development.....	20
8.17	Modules.....	20
8.18	Multi Perspective Preview.....	20
8.19	Performance.....	20
8.20	Permissions.....	21
8.21	Reports.....	21
8.22	Server Administrator.....	21
8.23	ServerManager.....	22
8.24	SiteArchitect.....	22



8.25	Tasks.....	23
8.26	Template Store.....	24



1 Administration

1.1 Improved stability when accessing FirstSpirit web applications on external web servers

Using an external web server (for example Apache Tomcat) could lead to problems concerning starting the FirstSpirit web applications on the external web server (for example FirstSpirit start page, ContentCreator etc.) because of varying start speed and / or start order of these servers.

Starting with the current FirstSpirit version, the external web server (for example Apache Tomcat) waits up to 5 minutes for a connection to the FirstSpirit server now. The FirstSpirit server can be started within this time interval. The external web server checks every 10 seconds if a connection can be established to the FirstSpirit server. When a connection can be established the FirstSpirit web applications connect automatically to the server.

Thus, for ensuring a frictionless start of external web server, FirstSpirit server and FirstSpirit web applications you should start the external web server always first and the FirstSpirit server afterwards.

Moreover, this allows that the FirstSpirit server will be able to install updates of web applications, if necessary, in any case because the external web server has already been started at this time.

For more information about using external web servers with FirstSpirit please see *FirstSpirit Manual for Administrators*, chapter “Integration into an external web server”.

1.2 Server update: Improved schedule logging

It is also possible to update the FirstSpirit Server using a schedule designed for this purpose (FirstSpirit ServerManager, menu “Server / Properties / Schedule management”, action “Server update”).

To improve traceability, logging is now carried out with the current FirstSpirit version if a more recent version of FirstSpirit is not available for update purposes (this takes place in the applicable *fs-schedule.*.log* schedule log file and in the *fs-server.log* file). For example:

```
INFO 20.10.2016 09:30:00.113 (de.espirit.firstspirit.server.scheduler.update.ServerUpdateTaskExecutor): FirstSpirit server is up-to-date, no newer version available
```

If there is a new FirstSpirit version available for update purposes, logging is carried out with the current server version and the version to which the FirstSpirit Server is updated.



For more information, see *FirstSpirit Manual for Administrators*, Chapter “Updating the FirstSpirit Server”, specifically the “Automatic update via the update service” section.

2 Media

2.1 Recognition of file types when uploading media using drag-and-drop improved

Media from the workstation's local file system can be dragged directly into the Media Store of the FirstSpirit project by means of drag-and-drop. The file type is recognized automatically by FirstSpirit. Starting with the current FirstSpirit version this applies also for the following Mime types now:

- `.ascx` (file type in FirstSpirit: “text/plain”)
- `.jar` (file type in FirstSpirit: “application/zip”)
- `.xsd` (file type in FirstSpirit: “text/xml”)

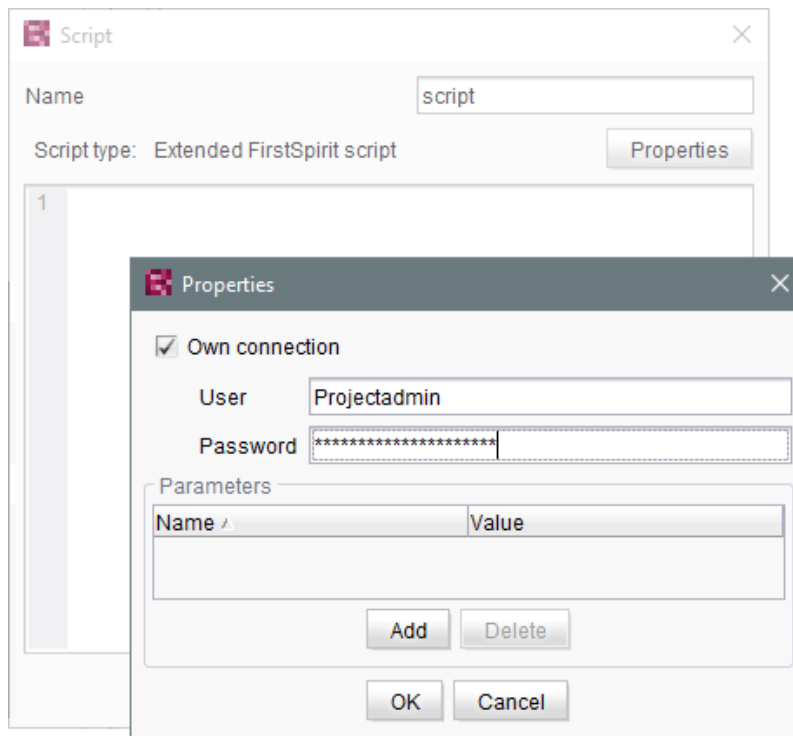
3 Module Development, Scripts, API

3.1 Establishing connections via API in schedule task scripts

Scripts are an important means to easily and quickly implement custom functionality that is not included in FirstSpirit's standard functionality set. Scripts may be used in various contexts in FirstSpirit, e.g. in schedule tasks (“FirstSpirit ServerManager / Server or Project properties / Schedule management”, action “Execute script”). If a script should perform modifying operations on a project, a separate connection to the server must be used instead of the current session. For this, login information (user name, password) of the user that should be used for authentication against the server must be entered.

Until now, this configuration could only be done via GUI:





As of the current FirstSpirit version, such a separate connection can also be established via API (interface `ScriptTask`, package `de.espirit.firstspirit.access.schedule`, FirstSpirit Access API). For this, the interface was extended with the following methods:

- `getUseCustomConnection()`
- `setUseCustomConnection(String login, String password)`
- `getCustomConnectionLogin()`
- `setUseSystemConnection()`

Note: The corresponding API documentation (see e.g. *Online Documentation for FirstSpirit (ODFS)*, “Template development / FirstSpirit API / API documentation”) will be published with the next release of FirstSpirit, however, the new functionality may already be used as of the current FirstSpirit version.

For further information about schedule tasks, see *FirstSpirit Manual for Administrators*, chapter “Execute script”.



4 Modules (general)

4.1 Library dependencies added in FirstSpirit web applications

Missing library dependencies have been added for all internal FirstSpirit web applications. The relevant .jar files have been added to the individual modules.

When updating the FirstSpirit Server, updating the following modules is recommended (assuming they are already installed):

- FirstSpirit Basic Search (“fs-search.fsm”)
- FirstSpirit Dynamic Database Access (“fs-integration.fsm”)
- FirstSpirit Security (“fs-security.fsm”)

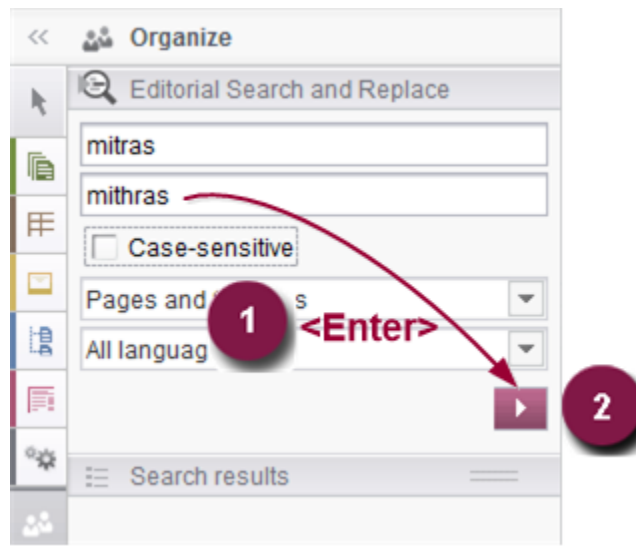
5 SiteArchitect / ContentCreator

5.1 Reports: Handling has been improved

In FirstSpirit, reports are an important and project-specifically customizable means of making content from any source available to editors in a project. Reports allow a structured display of data that can - depending upon a report's implementation - be searched, filtered, and used for editorial work (by way of drag-and-drop and buttons).

Actions that can be started using a button on reports in FirstSpirit SiteArchitect (e.g. starting a search) can now be easily triggered by pressing (1):





Furthermore, an arrow is used now for the button instead of the display name of the respective report (2).

For further information, see e.g. *Plug-In Development / Universal Extensions / Data Access / Use for Reporting* (→*FirstSpirit Online Documentation*).

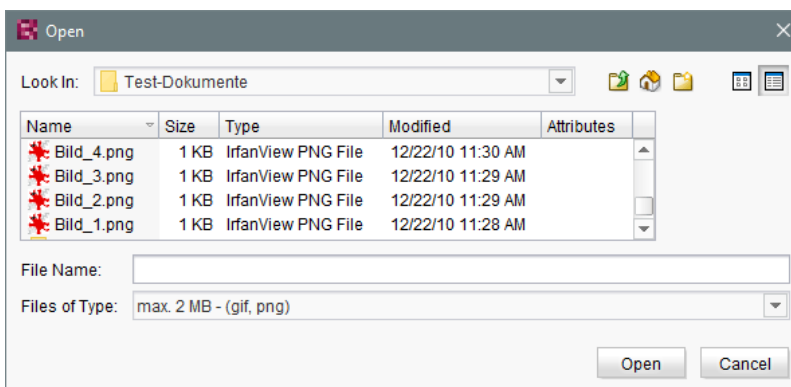
Furthermore, user guidance has been improved when using customer specific reports in ContentCreator (interface `StaticItemsProviding`, package `de.espirit.firstspirit.client.plugin.dataaccess.aspects`, FirstSpirit Developer API).

6 SiteArchitect / ServerManager

6.1 Speeding up file selection from directory structure of the client workstation

The file selection dialog allows selection of a desired file from the directory structure of the client workstation for upload to FirstSpirit SiteArchitect (e.g. Media store) or ServerManager (e.g. project import).





From the current FirstSpirit version onwards, the parameter

```
-DSynthetica.extendedFileChooser.sortEnabled=false
```

can be set in the connection or web start settings in order to deactivate the file selection dialog's sort functionality (column headers in the view mode “Details”). This can speed up work with the file selection dialog when the user needs to navigate among different directories of the client workstation's file system. If this parameter is set, an according entry will be logged to the log file **fs-server.log**:

```
INFO 26.09.2016 16:13:08.923 (de.espirit.common.gui.LookAndFeelUtil): disabled
sorting in file chooser'
```

Alternatively, files can also be uploaded into the Media store of FirstSpirit SiteArchitect using

- drag-and-drop and
- the “Media Import Wizard” (“Extras” menu).

7 Overview

ID	Description	Categories
165246	In the input component FS_LIST (type INLINE), optimized editing an entry in a separate window.	Input Components, SiteArchitect
166031	The validation behavior for the input component FS_LIST (type DATABASE) operating in “Mediamode” has been optimized.	ContentCreator, Dynamic Forms



ID	Description	Categories
175832	<p>As of the current FirstSpirit version, connections for schedule task scripts can also be established via API (interface <code>ScriptTask</code>, package <code>de.espirit.firstspirit.access.schedule</code>, FirstSpirit Access API).</p> <p>Further information can be found in chapter “Module Development, Scripts, API: Establishing connections via API in schedule task scripts”.</p>	Developer, FirstSpirit API, Tasks
178744 150701 192871	<p>Handling of reports has been improved.</p> <p>Further information can be found in chapter “SiteArchitect / Content-Creator: Reports: Handling has been improved”.</p>	ContentCreator, Editor, Reports, SiteArchitect
181337	During creation of a new package version, erroneous behavior could occur.	Corporate Content
181826	Optimized evaluation of a parameter from a page reference that is passed to a database query.	Database
182865	Evaluating the release state of a dataset has been optimized for the detailed view display.	Content Store, SiteArchitect
186100	In the FirstSpirit schema editor, creating a 1:N relationship to the same table has been optimized.	Database, Developer
187437	Optimized caching for remote projects in the action context.	Developer, FirstSpirit Administrator
188709	Optimized FirstSpirit access control database.	Database
190461	After deleting user groups in the project properties (“FirstSpirit Server-Manager / Project / Properties / Groups / Remove group”) related information on nodes with defined permissions in SiteArchitect were erroneously not updated.	FirstSpirit Administrator, Permissions



ID	Description	Categories
191247	<p>Optimized determination of the target element of dataset selection in a data source for the following actions:</p> <ul style="list-style-type: none"> ▪ “Version history” (Ctrl + H) ▪ “Extras / Show usages” (Ctrl + U) ▪ “Extras / Display dependencies” (Ctrl + R) 	Content Store, SiteArchitect
192153	When creating a format template, after inputting a reference name, the label of the field “Reference name” was erroneously still shown in red type.	SiteArchitect, Template Store
192222	<p>Stability when accessing FirstSpirit web applications on external web servers has been improved.</p> <p>Further information can be found in chapter “Administration: Improved stability when accessing FirstSpirit web applications on external web servers”.</p>	FirstSpirit Administrator, ServerManager
192424	<p>A new <code>-D</code> parameter can speed up work with the file selection dialog (FirstSpirit SiteArchitect and FirstSpirit ServerManager).</p> <p>Further information can be found in chapter “SiteArchitect / ServerManager: Speeding up file selection from directory structure of the client workstation”.</p>	Editor, FirstSpirit Administrator, FirstSpirit home page, Media Store, Performance, ServerManager, SiteArchitect
192539	Using WebSphere as an application server may have resulted in malfunctions when logging in on the FirstSpirit start page.	FirstSpirit home page
192549 192547 192637	<p>Missing library dependencies have been added for the FirstSpirit web application from the “fs-integration.fsm”, “fs-search.fsm” and “fs-security.fsm” modules. Updating these modules is recommended.</p> <p>Further information can be found in chapter “Modules (general): Library dependencies added in FirstSpirit web applications”.</p>	Module development, Modules
192582	Improved loading performance of SiteArchitect after project selection.	SiteArchitect



ID	Description	Categories
192718	In SiteArchitect, improved consideration of the template set that is configured for a preview viewport (functionality “Multi Perspective Preview”).	Multi Perspective Preview, SiteArchitect
192728	Erroneous behavior could occur when creating images using the method <code>getImageFromIcon(Icon)</code> (interface <code>ImageAgent</code> , package <code>de.espirit.firstspirit.agency</code>).	FirstSpirit API
192742	The method <code>checkAndThrow()</code> , part of the interface <code>ServerActionHandle</code> (FirstSpirit Access-API, Package <code>de.espirit.firstspirit.access</code>), has been optimized.	Developer, FirstSpirit API
192787	In form, rule, and output channel editors of templates, using the action “Undo” (<code>Ctrl + Z</code>) could lead to erroneous behavior.	Developer, SiteArchitect, Template Store
192866	The recognition of file types when uploading media using drag-and-drop has been improved. Further information can be found in chapter “Media: Recognition of file types when uploading media using drag-and-drop improved”.	Editor, Media Store
192868	For a user with server administrator privileges, “Administrator mode” was erroneously initially active in SiteArchitect (menu: “Project / Administrator mode”).	Server Administrator, SiteArchitect
192903	Generating output of data sets from a content source using the function <code>contentSelect</code> did not work correctly in some cases.	Generation
192915	FirstSpirit Server performance improvements in the “Send message” area (ServerManager: menu “Extras / Send message”).	Performance, Server Administrator
192956	To improve traceability, improvements have been made to logging the server update schedule in the current FirstSpirit version. Further information can be found in chapter “Administration: Server update: Improved schedule logging”.	FirstSpirit Administrator, Tasks
193023	Improvements in the area “Content Transport”.	Content Transport
193181	The behavior when changing the language or focus in the FS_CATALOG input component has been optimized.	Input Components



ID	Description	Categories
193249	Cleanup of the repository files during archiving has been improved.	Archiving, FirstSpirit Administrator
193254	File pointer management for socket connections has been improved.	Server Administrator
193260	Generation may have resulted in a malfunction.	Generation
193338	Evaluation of the project property “Languages can be hidden” (“FirstSpirit ServerManager / Project / Properties / Options”) in SiteArchitect has been improved.	ServerManager, SiteArchitect
193389	In rare cases, accessing the repository may have resulted in malfunctions.	FirstSpirit Administrator, ServerManager
193395	Updating icons and label of MenuItemPlugin (Interface <code>JavaClientEditorialToolbarItemsPlugin</code> , Package <code>de.espirit.firstspirit.client.plugin</code>) has been improved.	SiteArchitect
193471	The <code>getService(Class<T>)</code> method of the <code>ServicesBroker</code> interface (FirstSpirit Access API, Package <code>de.espirit.firstspirit.access</code>) has been optimized.	FirstSpirit API, Performance
193493	Rolling out a package in the target project may have resulted in a malfunction.	Corporate Content

8 Categories

8.1 Archiving

ID	Description
193249	Cleanup of the repository files during archiving has been improved.

8.2 Content Store

ID	Description
182865	Evaluating the release state of a dataset has been optimized for the detailed view display.



ID	Description
191247	Optimized determination of the target element of dataset selection in a data source for the following actions: <ul style="list-style-type: none"> ▪ “Version history” (Ctrl + H) ▪ “Extras / Show usages” (Ctrl + U) ▪ “Extras / Display dependencies” (Ctrl + R)

8.3 Content Transport

ID	Description
193023	Improvements in the area “Content Transport”.

8.4 ContentCreator

ID	Description
166031	The validation behavior for the input component FS_LIST (type DATABASE) operating in “Mediamode” has been optimized.
178744	Handling of reports has been improved.
150701	Further information can be found in chapter “SiteArchitect / ContentCreator: Reports: Handling has been improved”.
192871	

8.5 Corporate Content

ID	Description
181337	During creation of a new package version, erroneous behavior could occur.
193493	Rolling out a package in the target project may have resulted in a malfunction.



8.6 Database

ID	Description
181826	Optimized evaluation of a parameter from a page reference that is passed to a database query.
186100	In the FirstSpirit schema editor, creating a 1:N relationship to the same table has been optimized.
188709	Optimized FirstSpirit access control database.

8.7 Developer

ID	Description
175832	<p>As of the current FirstSpirit version, connections for schedule task scripts can also be established via API (interface <code>ScriptTask</code>, package <code>de.espirit.firstspirit.access.schedule</code>, FirstSpirit Access API).</p> <p>Further information can be found in chapter “Module Development, Scripts, API: Establishing connections via API in schedule task scripts”.</p>
186100	In the FirstSpirit schema editor, creating a 1:N relationship to the same table has been optimized.
187437	Optimized caching for remote projects in the action context.
192742	The method <code>checkAndThrow()</code> , part of the interface <code>ServerActionHandle</code> (FirstSpirit Access-API, Package <code>de.espirit.firstspirit.access</code>), has been optimized.
192787	In form, rule, and output channel editors of templates, using the action “Undo” (<code>Ctrl+Z</code>) could lead to erroneous behavior.

8.8 Dynamic Forms

ID	Description
166031	The validation behavior for the input component <code>FS_LIST</code> (type <code>DATABASE</code>) operating in “Mediamode” has been optimized.



8.9 Editor

ID	Description
178744	Handling of reports has been improved.
150701	Further information can be found in chapter “SiteArchitect / ContentCreator: Reports: Handling has been improved”.
192871	
192424	<p>A new <code>-D</code> parameter can speed up work with the file selection dialog (FirstSpirit SiteArchitect and FirstSpirit ServerManager).</p> <p>Further information can be found in chapter “SiteArchitect / ServerManager: Speeding up file selection from directory structure of the client workstation”.</p>
192866	<p>The recognition of file types when uploading media using drag-and-drop has been improved.</p> <p>Further information can be found in chapter “Media: Recognition of file types when uploading media using drag-and-drop improved”.</p>

8.10 FirstSpirit API

ID	Description
175832	<p>As of the current FirstSpirit version, connections for schedule task scripts can also be established via API (interface <code>ScriptTask</code>, package <code>de.espirit.firstspirit.access.schedule</code>, FirstSpirit Access API).</p> <p>Further information can be found in chapter “Module Development, Scripts, API: Establishing connections via API in schedule task scripts”.</p>
192728	Erroneous behavior could occur when creating images using the method <code>getImageFromIcon(Icon)</code> (interface <code>ImageAgent</code> , package <code>de.espirit.firstspirit.agency</code>).
192742	The method <code>checkAndThrow()</code> , part of the interface <code>ServerActionHandle</code> (FirstSpirit Access-API, Package <code>de.espirit.firstspirit.access</code>), has been optimized.
193471	The <code>getService(Class<T>)</code> method of the <code>ServicesBroker</code> interface (FirstSpirit Access API, Package <code>de.espirit.firstspirit.access</code>) has been optimized.



8.11 FirstSpirit Administrator

ID	Description
187437	Optimized caching for remote projects in the action context.
190461	After deleting user groups in the project properties (“FirstSpirit ServerManager / Project / Properties / Groups / Remove group”) related information on nodes with defined permissions in SiteArchitect were erroneously not updated.
192222	Stability when accessing FirstSpirit web applications on external web servers has been improved. Further information can be found in chapter “Administration: Improved stability when accessing FirstSpirit web applications on external web servers”.
192424	A new <code>-D</code> parameter can speed up work with the file selection dialog (FirstSpirit SiteArchitect and FirstSpirit ServerManager). Further information can be found in chapter “SiteArchitect / ServerManager: Speeding up file selection from directory structure of the client workstation”.
192956	To improve traceability, improvements have been made to logging the server update schedule in the current FirstSpirit version. Further information can be found in chapter “Administration: Server update: Improved schedule logging”.
193249	Cleanup of the repository files during archiving has been improved.
193389	In rare cases, accessing the repository may have resulted in malfunctions.

8.12 FirstSpirit home page

ID	Description
192424	A new <code>-D</code> parameter can speed up work with the file selection dialog (FirstSpirit SiteArchitect and FirstSpirit ServerManager). Further information can be found in chapter “SiteArchitect / ServerManager: Speeding up file selection from directory structure of the client workstation”.



ID	Description
192539	Using WebSphere as an application server may have resulted in malfunctions when logging in on the FirstSpirit start page.

8.13 Generation

ID	Description
192903	Generating output of data sets from a content source using the function <code>contentSelect</code> did not work correctly in some cases.
193260	Generation may have resulted in a malfunction.

8.14 Input Components

ID	Description
165246	In the input component FS_LIST (type INLINE), optimized editing an entry in a separate window.
193181	The behavior when changing the language or focus in the FS_CATALOG input component has been optimized.

8.15 Media Store

ID	Description
192424	<p>A new <code>-D</code> parameter can speed up work with the file selection dialog (FirstSpirit SiteArchitect and FirstSpirit ServerManager).</p> <p>Further information can be found in chapter “SiteArchitect / ServerManager: Speeding up file selection from directory structure of the client workstation”.</p>
192866	<p>The recognition of file types when uploading media using drag-and-drop has been improved.</p> <p>Further information can be found in chapter “Media: Recognition of file types when uploading media using drag-and-drop improved”.</p>



8.16 Module development

ID	Description
192549 192547 192637	<p>Missing library dependencies have been added for the FirstSpirit web application from the “fs-integration.fsm”, “fs-search.fsm” and “fs-security.fsm” modules. Updating these modules is recommended.</p> <p>Further information can be found in chapter “Modules (general): Library dependencies added in FirstSpirit web applications”.</p>

8.17 Modules

ID	Description
192549 192547 192637	<p>Missing library dependencies have been added for the FirstSpirit web application from the “fs-integration.fsm”, “fs-search.fsm” and “fs-security.fsm” modules. Updating these modules is recommended.</p> <p>Further information can be found in chapter “Modules (general): Library dependencies added in FirstSpirit web applications”.</p>

8.18 Multi Perspective Preview

ID	Description
192718	In SiteArchitect, improved consideration of the template set that is configured for a preview viewport (functionality “Multi Perspective Preview”).

8.19 Performance

ID	Description
192424	A new <code>-D</code> parameter can speed up work with the file selection dialog (FirstSpirit SiteArchitect and FirstSpirit ServerManager).



ID	Description
	Further information can be found in chapter “SiteArchitect / ServerManager: Speeding up file selection from directory structure of the client workstation”.
192915	FirstSpirit Server performance improvements in the “Send message” area (ServerManager: menu “Extras / Send message”).
193471	The <code>getService(Class<T>)</code> method of the <code>servicesBroker</code> interface (FirstSPIrit Access API, Package <code>de.espirit.firstspirit.access</code>) has been optimized.

8.20 Permissions

ID	Description
190461	After deleting user groups in the project properties (“FirstSpirit ServerManager / Project / Properties / Groups / Remove group”) related information on nodes with defined permissions in SiteArchitect were erroneously not updated.

8.21 Reports

ID	Description
178744	Handling of reports has been improved.
150701	
192871	Further information can be found in chapter “SiteArchitect / ContentCreator: Reports: Handling has been improved”.

8.22 Server Administrator

ID	Description
192868	For a user with server administrator privileges, “Administrator mode” was erroneously initially active in SiteArchitect (menu: “Project / Administrator mode”).
192915	FirstSpirit Server performance improvements in the “Send message” area (ServerManager: menu “Extras / Send message”).
193254	File pointer management for socket connections has been improved.



8.23 ServerManager

ID	Description
192222	Stability when accessing FirstSpirit web applications on external web servers has been improved. Further information can be found in chapter “Administration: Improved stability when accessing FirstSpirit web applications on external web servers”.
192424	A new <code>-D</code> parameter can speed up work with the file selection dialog (FirstSpirit SiteArchitect and FirstSpirit ServerManager). Further information can be found in chapter “SiteArchitect / ServerManager: Speeding up file selection from directory structure of the client workstation”.
193338	Evaluation of the project property “Languages can be hidden” (“FirstSpirit ServerManager / Project / Properties / Options”) in SiteArchitect has been improved.
193389	In rare cases, accessing the repository may have resulted in malfunctions.

8.24 SiteArchitect

ID	Description
165246	In the input component FS_LIST (type INLINE), optimized editing an entry in a separate window.
178744	Handling of reports has been improved.
150701 192871	Further information can be found in chapter “SiteArchitect / ContentCreator: Reports: Handling has been improved”.
182865	Evaluating the release state of a dataset has been optimized for the detailed view display.
191247	Optimized determination of the target element of dataset selection in a data source for the following actions: <ul style="list-style-type: none"> ▪ “Version history” (<code>Ctrl + H</code>) ▪ “Extras / Show usages” (<code>Ctrl + U</code>) ▪ “Extras / Display dependencies” (<code>Ctrl + R</code>)



ID	Description
192153	When creating a format template, after inputting a reference name, the label of the field “Reference name” was erroneously still shown in red type.
192424	<p>A new <code>-D</code> parameter can speed up work with the file selection dialog (FirstSpirit SiteArchitect and FirstSpirit ServerManager).</p> <p>Further information can be found in chapter “SiteArchitect / ServerManager: Speeding up file selection from directory structure of the client workstation”.</p>
192582	Improved loading performance of SiteArchitect after project selection.
192718	In SiteArchitect, improved consideration of the template set that is configured for a preview viewport (functionality “Multi Perspective Preview”).
192787	In form, rule, and output channel editors of templates, using the action “Undo” (<code>Ctrl + Z</code>) could lead to erroneous behavior.
192868	For a user with server administrator privileges, “Administrator mode” was erroneously initially active in SiteArchitect (menu: “Project / Administrator mode”).
193338	Evaluation of the project property “Languages can be hidden” (“FirstSpirit ServerManager / Project / Properties / Options”) in SiteArchitect has been improved.
193395	Updating icons and label of <code>MenuItemsPlugin</code> (Interface <code>JavaClientEditorialToolbarItemsPlugin</code> , Package <code>de.espirit.firstspirit.client.plugin</code>) has been improved.

8.25 Tasks

ID	Description
175832	<p>As of the current FirstSpirit version, connections for schedule task scripts can also be established via API (interface <code>scriptTask</code>, package <code>de.espirit.firstspirit.access.schedule</code>, FirstSpirit Access API).</p> <p>Further information can be found in chapter “Module Development, Scripts, API: Establishing connections via API in schedule task scripts”.</p>
192956	To improve traceability, improvements have been made to logging the server update schedule in the current FirstSpirit version.



ID	Description
	Further information can be found in chapter “Administration: Server update: Improved schedule logging”.

8.26 Template Store

ID	Description
192153	When creating a format template, after inputting a reference name, the label of the field “Reference name” was erroneously still shown in red type.
192787	In form, rule, and output channel editors of templates, using the action “Undo” (Ctrl + Z) could lead to erroneous behavior.

