

Release-Notes **FirstSpirit** 5.1.507

Previously released versions: 5.1.106, 5.1.209, 5.1.311, 5.1.410

New code signing certificate

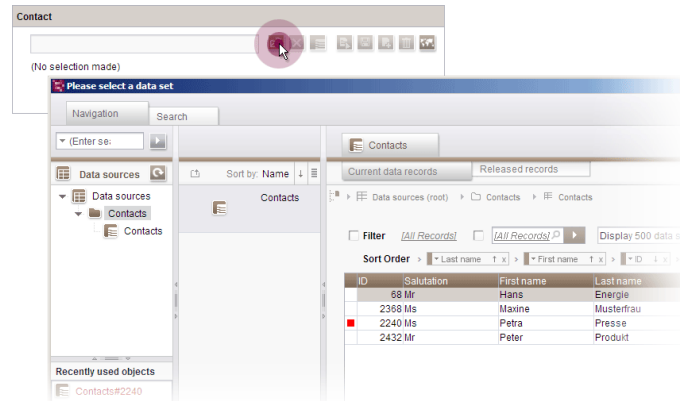
The content of FirstSpirit JAR files is signed with a certificate. This procedure is also called "code signing".
In the current FirstSpirit version, the content is signed with a new certificate that is valid until 05-21-2017.

SiteArchitect: New selection mode for FS_DATASET

In SiteArchitect, datasets were previously selected in FS_DATASET using a selection dialog, but now they can also be selected from a simple list. This can potentially improve performance, but `selectorMode="list"` must be set.

Prerequisites: The `SOURCES / CONTENT` tags may only be used to define a **single** data source.

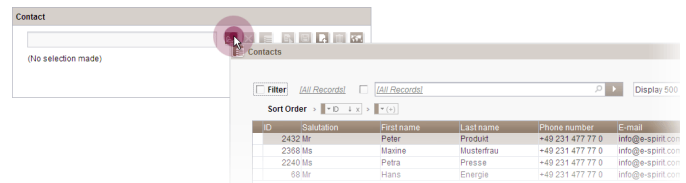
If nothing is specified for `SOURCES / CONTENT` or if multiple data sources are defined, the selection dialog (`selectorMode="dialog"`) is used automatically.



Selecting datasets via the dialog

If the `mode` parameter is set to "combobox" (`mode="combobox"`), the `selectorMode` parameter has no effect.

In ContentCreator, the `selectorMode` parameter has no effect on the display or the selection mode.



Selecting datasets using a list

Example:

```
<FS_DATASET
  name="st_contact"
  allowDelete="no"
  allowEdit="no"
  allowNew="no"
  hFill="yes"
  selectorMode="list"
  useLanguages="no">
<LANGINFOS>
<LANGINFO lang="*" label="Contact" />
<LANGINFO lang="DE" label="Kontakt" />
</LANGINFOS>
<SOURCES>
<CONTENT name="contacts"/>
</SOURCES>
</FS_DATASET>
```

For more information, see *FirstSpirit Online Documentation*, "Template development / Forms / Input components / DATASET (new)".

SiteArchitect: Selecting multiple datasets in FS_LIST

The "DATABASE" FS_LIST type can be used to create lists of datasets. If you are permitted to select datasets via

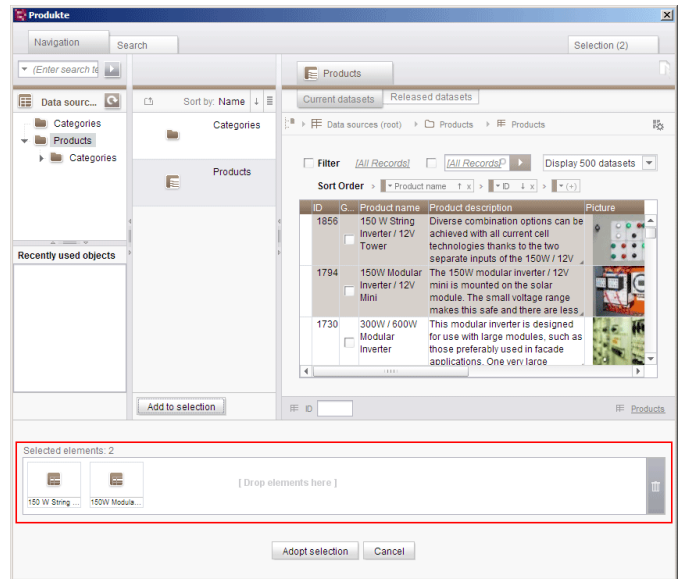
```
<ACTIONS>
<ACTION name="ADD"/>
<ACTIONS>
```

a dialog box opens in SiteArchitect by default (corresponds to **<PARAM name="select ui">dialog</PARAM>**) when you click the "Add" icon. From here, you can select the required dataset. In FirstSpirit version 5.1.507, this dialog has been enhanced by incorporating a "drop zone", which shows a list of selected datasets and allows multiple datasets to be selected (see figure).

The datasets can be moved to the "Selected elements" area either by using drag-and-drop or by clicking the "Add to selection" button. Multiple datasets can be selected by keeping the <CTRL> or <SHIFT> keys pressed at the same time. All the datasets that have been selected can then be transferred directly into the input form by clicking the "Adopt selection" button. This dialog is also used when **<PARAM name="select ui">list</PARAM>** or **<PARAM name="select ui">popup</PARAM>** has been configured and there are multiple data sources available for the table template defined via the **Table** tag (filtered view).

For more information, see

- *FirstSpirit Online Documentation*, "Template development / Forms / Input components / LIST (new) / DATABASE", **<ACTION/>** tag
- *FirstSpirit SiteArchitect Manual*, "Data lists" and "Selection dialogs" chapters.



FS_LIST: Selecting multiple datasets

FS_LIST, INLINE type with link templates: Calculation of external references

When the FS_LIST (INLINE type) input component was used with link templates (**<TEMPLATES source="linktemplates"/>**) in previous versions, external references (link template, "Properties" tab, "External URL") were not generated correctly. This issue has been resolved as part of FirstSpirit version 5.1.507.

In order for the associated fix to work in existing projects, the references have to be recalculated. This can be achieved by changing the FS_LIST instances that make use of them.

Only in exceptional cases can **all** of the references in the project be recalculated using the "Repair references" schedule: FirstSpirit ServerManager / Project properties / Schedule management / "Repair references" action.

It takes a lot of memory and processing time to execute this schedule and so it should only be used during a maintenance period!

FS_BUTTON: New standard icon for "Create section"

The **FsResource.FsIcon** class of the **de.espirit.firstspirit.common** package in the FirstSpirit Developer API provides standard icons for the FS_BUTTON input component. As part of FirstSpirit version 5.1.507, an extra icon has been added for new sections:



This can be accessed via the **NEW_SECTION** key, e.g.,

```
<FS_BUTTON name="button"
...
icon="fs:new_section"
...
</FS_BUTTON>
```

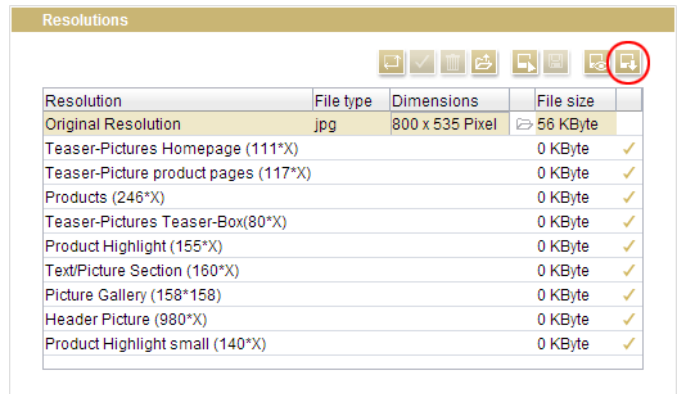
For more information, see also *FirstSpirit Online Documentation*, "Template development / Forms / Input components / BUTTON (new)".

SiteArchitect: Downloading media from the media store

For images in the media store, there is a new download icon in the "Resolutions" area (see figure). As of FirstSpirit version 5.1.507, this means that a copy of the highlighted resolution can be downloaded to the local file system of the workstation in the relevant file format. The required download folder can be selected via the file selection dialog.

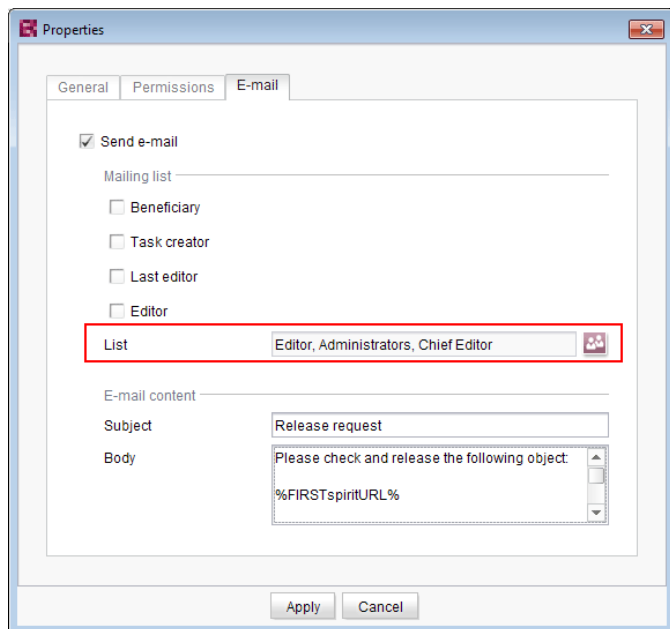
In addition, certain icons and buttons in this area have been adapted.

For more information, see *FirstSpirit SiteArchitect documentation*, chapter "Functions in the editing area".



Downloading images from the media store

SiteArchitect: Configuring e-mail messaging in workflows



Sending e-mails to a list of users / groups

In FirstSpirit, lists of users and / or groups can be defined for activities and transitions in a workflow. Messages are then sent to these users and / or groups via e-mail when the corresponding workflow step is completed. The "List" field is used for this purpose (see figure).

Changes to the design of FirstSpirit SiteArchitect resulted in these lists not being included in some versions of FirstSpirit version series 5.1. This error has been fixed in version 5.1.507: If at least one user or group is selected in this field, an e-mail is sent to the selected recipient(s).

Migration information: If this function was used to define a list in an earlier version of FirstSpirit version series 5.1 (5.1R1, 5.1R2, 5.1R3, 5.1R4), this list must be redefined following an update to the latest version (5.1.507) so that this error fix is applied and e-mails are sent to the users or groups in the defined list.

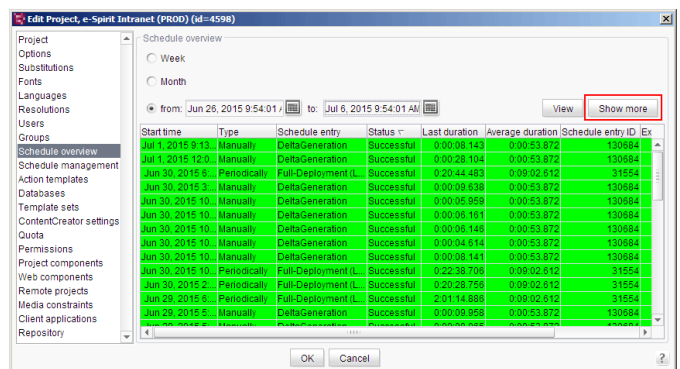
For more information about configuring workflows, see *FirstSpirit Online Documentation*, "Templates (Basics) / Structure of templates / Workflows".

Schedule overview: Improved performance when handling a large number of schedules

FirstSpirit schedule entry planning enables time-controlled execution of schedules ("tasks") at server/project level, e.g., for generating and deploying a project, for carrying out server maintenance, for running scripts, etc. Schedules that have already been executed or planned are shown in a table in ServerManager under the "Schedule overview" menu item.

Previously, all the schedules within the selected time span were displayed. As of FirstSpirit version 5.1.507, only 40 schedules are now shown initially. In situations that involve working with a large number of schedules, this can improve the performance. Further entries can be loaded by clicking the "Show more" button (see figure). If there are no more than 40 entries for the selected time span anyway, the button is grayed out.

For more information, see *FirstSpirit Documentation for Administrators*, Chapter "Schedule entry planning".



FirstSpirit ServerManager: Schedule overview

Database connection: jdbc.POOLMAX parameter

FirstSpirit uses a separate pool instance on each occasion, e.g., for each schema node within a project, for each deployed web application (FirstSpirit DynamicDatabaseAccess, for instance), etc.

Previously, **jdbc.POOLMAX** defined the maximum number of unused DB connections that were allowed to remain in the pool, but **as of FirstSpirit version 5.1.507**, the parameter is now used to restrict the number of connections to the database that can be established.

jdbc.POOLMAX has to be at least equal to **jdbc.POOLMIN** + 4 (the default value for **jdbc.POOLMIN** is 5). If this is not the case, the value is adjusted automatically and a corresponding warning is logged.

Once the value set for **jdbc.POOLMAX** has been reached, the system waits for a free connection (five seconds by default). After that, an exception occurs at the location that is using the parameter (e.g., client, generation). The period of time spent waiting for a free connection can be configured using the **jdbc.FETCH_CONNECTION_TIMEOUT** parameter (value to be specified in milliseconds).

For more information, see *FirstSpirit Documentation for Administrators*, Chapter "Description of optional parameters".

ContentTransport: Using the API to identify the relationship between objects in the source and target projects

Within the `de.espirit.firstspirit.access.packagepool` package (FirstSpirit Access API), the

- **IdTranslator** interface

has been supplemented with the methods

- **translateIdToSubscriber(Long publisherId)**
- **translateIdToPublisher(Long subscriberId)**

and within the **Subscription** interface, the methods

- **getElementIdTranslator** (for content packages) and
- **getTemplateIdTranslator** (for template packages)

have been added.

As a result, a clear relationship can now be established between objects in the source project (also referred to as the "master project") and objects in the target project: For instance, the **translateIdToSubscriber(Long publisherId)** method takes an object in the target project and determines the ID of the corresponding object in the source project.

New functionalities

ID	Role	Category	Sub Category	Description
171046	Developer	SiteArchitect (JavaClient)	Scripting	Extended the class "FsResource.FsIcon" (Developer API, package <code>de.espirit.firstspirit.common</code>). Further information can be found in the introduction (subpoint "FS_BUTTON: New standard icon for 'Create section'").
169766	FirstSpirit Administrator	Administration	None	In the current FirstSpirit version, the content is signed with a new certificate. More information can be found in the introduction (sub item "New code signing certificate").
173778	FirstSpirit Administrator	Administration	Security	Security has been improved in relation to the FirstSpirit sessions.
103701	FirstSpirit Administrator	ServerManager (Server and Project Configuration)	Database Configuration	The parameter "jdbc.POOLMAX" specifies the maximum number of database connections that may be established concurrently. Further information can be found in the introduction (subpoint "Database connection: jdbc.POOLMAX parameter").
114361	Server Administrator	ServerManager (Server and Project Configuration)	ContentTransport	The interface "IdTranslator" (Access-API, <code>de.espirit.firstspirit.access.packagepool</code> package) has been completed with other methods. More information can be found in the introduction (sub item "ContentTransport: Using the API to identify the relationship between objects in the source and target projects").

Bug-fixes

ID	Role	Category	Sub Category	Description
124437	All Users	ContentCreator (WebClient)	All Stores	The interface language was inadvertently ignored when showing the display names in the menus.
171057	All Users	ContentCreator (WebClient)	Content Store	Reference to write-protected databases has been optimized for the purpose of creating or editing datasets.
166107	All Users	ContentCreator (WebClient)	Dom Editor	Malfunctions could occur when saving lists with more than two levels in a rich text editor (CMS_INPUT_DOM).
168591	All Users	ContentCreator (WebClient)	Input Components	In Microsoft Internet Explorer, improvements have been made to how the date field (CMS_INPUT_DATE) is displayed.
170089	All Users	ContentCreator (WebClient)	Input Components	In Microsoft Internet Explorer, an unexpected query sometimes occurred when selecting an image (FS_REFERENCE).
176065	All Users	ContentCreator (WebClient)	Input Components	In the CMS_INPUT_IMAGEMAP input component, the display of remote media has been optimized.
165244	All Users	ContentCreator (WebClient)	Media Store	The uploading of media when using Microsoft Internet Explorer 8 has been improved.
165493	All Users	ContentCreator (WebClient)	Multi Perspective Preview	Beim Schließen des Perspektivauswahlbereichs konnte es irrtümlich zu einer nicht aktuellen Anzeige in der Vorschau kommen.

ID	Role	Category	Sub Category	Description
170280	All Users	ContentCreator (WebClient)	Multi Perspective Preview	The thumbnail display has been optimized for scrolling on the page.
168982	All Users	ContentCreator (WebClient)	None	The display of the main menu button when using Microsoft Internet Explorer 8 has been improved.
162033	All Users	ContentCreator (WebClient)	Page Store	Very occasionally, a page did not get released to other users for editing after a section had been edited.
172897	All Users	ContentCreator (WebClient)	Page Store	If the browser was closed during editing of a page in Microsoft Internet Explorer, the page remained in edit mode incorrectly.
170874	All Users	ContentCreator (WebClient)	Search	The performance of global searches has been significantly improved.
159681	All Users	ContentCreator (WebClient)	Site Store	The mechanism for identifying changes in the navigation system (menu items moved or renamed) has been optimized.
170331	All Users	ContentCreator (WebClient)	Site Store	The navigation behavior has been improved when deleting a page via a workflow.
167942	All Users	ContentCreator (WebClient)	Version History	There was an error in the difference display (Comparison View): remote media were not displayed correctly.
155072	All Users	SiteArchitect (JavaClient)	All Stores	The dialog for displaying the uses of an object has been optimized.
162103	All Users	SiteArchitect (JavaClient)	All Stores	The performance has been optimized for the Mac OS X operating system when adding elements to the tree with drag-and-drop.
167755	All Users	SiteArchitect (JavaClient)	All Stores	Malfunctions could sometimes occur when copying an object that was being simultaneously edited by another user.
155592	All Users	SiteArchitect (JavaClient)	Clipboard	The clipboard intermittently failed to update immediately when using the <Alt>+<Tab> key combination to switch between open applications, resulting in a delay.
168612	All Users	SiteArchitect (JavaClient)	Content Store	The loading of the brief overview has been optimized in data sources.
170335	All Users	SiteArchitect (JavaClient)	Content Store	In the data sources, it is possible to search for specific content in one of the input fields of a dataset ("Simple search" function). This search has been optimized.
171127	All Users	SiteArchitect (JavaClient)	Content Store	In data sources, the strategy for detecting the assignment of identical dataset IDs (GIDs) for operations with datasets has been optimized.
167470	All Users	SiteArchitect (JavaClient)	ContentTransport	In the "Content Transport" function, malfunctions could occur when installing features.
162946	All Users	SiteArchitect (JavaClient)	Dom Editor	
170361	All Users	SiteArchitect (JavaClient)	Dom Editor	Within the CMS_INPUT_DOM input component, the removal of formatting has been optimized.
164257	All Users	SiteArchitect (JavaClient)	Dynamic Forms	The display of rule violations in the referenced datasets of an FS_LIST (DATABASE type) has been improved for foreign key relationships.
173051	All Users	SiteArchitect (JavaClient)	Dynamic Forms	The content of input components can be checked in rules with a regular expression (matches). The regular expression can be used to check whether the editor has included at least one character which is not the equivalent of a whitespace character (blank space, tab space, etc.). A problem could occur during a check of this type if the editor had never made changes to an input component.
165157	All Users	SiteArchitect (JavaClient)	Input Components	An FS_LIST (INLINE type) input component can be used within entries of an "old" CMS_INPUT_CONTENTAREALIST input component. Malfunctions could sometimes occur when adding entries to an FS_LIST (INLINE type) input component of this kind.
165632	All Users	SiteArchitect (JavaClient)	Input Components	Very occasionally, malfunctions occurred when dragging and dropping values between input components in view mode.
166903	All Users	SiteArchitect (JavaClient)	Input Components	Within the FS_DATASET input component, it is now possible to select the datasets via a list. Further information can be found in the introduction (subpoint "SiteArchitect: New selection mode for FS_DATASET").
167682	All Users	SiteArchitect (JavaClient)	Input Components	The performance has been optimized in terms of entering content in any input component.
167991	All Users	SiteArchitect (JavaClient)	Input Components	An option to select multiple datasets has been added to the FS_LIST (DATABASE type) input component. Further information can be found in the introduction (subpoint "SiteArchitect: Selecting multiple datasets in FS_LIST").
168535	All Users	SiteArchitect (JavaClient)	Input Components	When the FS_LIST (PAGE type) input component was generated, not all of the changes made to the order of section on the page were taken into account.
169032	All Users	SiteArchitect (JavaClient)	Input Components	In the FS_LIST (INLINE type) input component, selection via the pop-up window ("select-ui" parameter set to "popup" when used with <ACTION name="ADD"/>) has been improved.
169134	All Users	SiteArchitect (JavaClient)	Input Components	The mechanism for identifying changes that relate to empty language-independent text fields (CMS_INPUT_TEXT) has been optimized.
169446	All Users	SiteArchitect (JavaClient)	Input Components	Das Aufräumen der Änderungsinformationen in den Eingabekomponenten nach dem Sprachwechsel und Zwischenspeichern wurde optimiert.
169931	All Users	SiteArchitect (JavaClient)	Input Components	In workflow forms, using the action "Go to media" of the input component FS_REFERENCE could lead to erroneous behavior.
170645	All Users	SiteArchitect (JavaClient)	Input Components	Malfunctions sometimes occurred when the "show-language-tabs" and "show-selection-box" parameters were combined in the layout configuration for the FS_LIST (INLINE type) input component.
171143	All Users	SiteArchitect (JavaClient)	Input Components	In the FS_LIST (DATABASE type) input component, the inclusion of defined default values has been optimized.
171475	All Users	SiteArchitect (JavaClient)	Input Components	After migrating the CMS_INPUT_OBJECTCHOOSER input component to FS_DATASET, malfunctions could sometimes occur when the component was displayed with an empty value. FirstSpirit versions >=5.0.311 were affected.
171607	All Users	SiteArchitect (JavaClient)	Input Components	Within the FS_LIST (INLINE type) component, the deletion of an entry from the list was not identified as a change even though it should have been.
173167	All Users	SiteArchitect (JavaClient)	Input Components	Within the FS_LIST (DATABASE type) input component, the selection view has been optimized in the selection dialog.

ID	Role	Category	Sub Category	Description
173293	All Users	SiteArchitect (JavaClient)	Input Components	Within the CMS_INPUT_NUMBER input component, the process of pasting values with separators from the clipboard has been optimized.
173622	All Users	SiteArchitect (JavaClient)	Input Components	
163736	All Users	SiteArchitect (JavaClient)	Media Store	Visualization of the memory status has been improved for media. Further information can be found in the introduction (subpoint "SiteArchitect: Downloading media from the media store").
167610	All Users	SiteArchitect (JavaClient)	Media Store	Malfunctions occurred intermittently when drag-and-drop was used to add a media file to a resolution.
167849	All Users	SiteArchitect (JavaClient)	Media Store	The dialog process for uploading media has been improved.
172842	All Users	SiteArchitect (JavaClient)	Media Store	When selecting a file in the media selection dialog, it no longer matters whether the file extension is written in uppercase or lowercase letters.
174000	All Users	SiteArchitect (JavaClient)	Media Store	Optimized behavior when cropping media elements of type Picture multiple times in a row.
166207	All Users	SiteArchitect (JavaClient)	None	If the order of the symbols was changed in the Organize area, this new order was not retained when a project was reopened.
172704	All Users	SiteArchitect (JavaClient)	None	On the personalized homepage ("Home"), the evaluation of rights has been improved for the objects displayed.
169525	All Users	SiteArchitect (JavaClient)	Page Store	Changes to the order of sections were inadvertently ignored during saving.
161609	All Users	SiteArchitect (JavaClient)	Preview	In the "Extras" menu item, evaluation of the "Show preview errors" setting has been improved.
168618	All Users	SiteArchitect (JavaClient)	Preview	In the integrated preview, malfunctions could sometimes occur when using the Chrome browser to open external links in a separate window.
166860	All Users	SiteArchitect (JavaClient)	Search	The process of searching for reference names has been optimized for names that do not adhere to the current naming conventions.
168625	All Users	SiteArchitect (JavaClient)	Search	Once invalid references have been found, the results are now highlighted in the template in color.
169086	All Users	SiteArchitect (JavaClient)	Search	In the file selection dialog, it was not possible to carry out a search directly after entering the search word and pressing the <Enter> key to confirm.
170018	All Users	SiteArchitect (JavaClient)	Search	The performance of global searches in projects with a large number of datasets has been significantly improved.
168484	All Users	SiteArchitect (JavaClient)	Site Store	For the purpose of setting up page references, the process of defining a link to an external address or a related project has been optimized.
158210	All Users	SiteArchitect (JavaClient)	Translation help	The data did not always end up being fully saved if the translation help dialog was closed using the <Esc> key because no prompt appeared.
160765	All Users	SiteArchitect (JavaClient)	Translation help	When scrolling in the translation help, the source and target language elements of the form were sometimes displayed out of sync with each other.
165480	All Users	SiteArchitect (JavaClient) and ContentCreator (WebClient)	Dom Editor	In the CMS_INPUT_DOM input component, a background color can be set for cells in an inline table. This background color was incorrectly not taken into account if the cell did not contain any text.
160671	All Users	SiteArchitect (JavaClient) and ContentCreator (WebClient)	Security	The process of evaluating the number of sessions has been improved. A meaningful error message has been added for when the permissible number of sessions is exceeded.
148277	Developer	ContentCreator (WebClient)	Modules	In rare cases, calling a ValueService implemented by the user could lead to malfunctions.
172355	Developer	ContentCreator (WebClient)	Modules	The <i>isEnabled()</i> and <i>isVisible()</i> methods can be used for the implementation of the "WebeditToolbarActionsItemsPlugin" interface (Developer API, <i>de.espirit.firstspirit.webedit.plugin</i> package). The combined impact of the two parameters on how a menu item is displayed has been improved.
172084	Developer	ServerManager (Server and Project Configuration)	Generation	Improved evaluation of the standard configuration parameter <i>stripWelcomeFileNames</i> for the path generator "Advanced URLs".
146695	Developer	SiteArchitect (JavaClient)	Corporate Content	Packet generation has been optimized for the "CorporateContent" function.
176138	Developer	SiteArchitect (JavaClient)	E-mail	The sending of an e-mail to a list of users or user groups has been improved in a workflow. Further information can be found in the introduction (subpoint "SiteArchitect: Configuring e-mail messaging in workflows").
153088	Developer	SiteArchitect (JavaClient)	External synchronization	Using the functionality "External Synchronization" could lead to erroneous behavior when transporting contents of a data source.
166337	Developer	SiteArchitect (JavaClient)	Template Development	The "#nav.ref.page.id" expression did not return the page ID in a navigation function when used to interpret "pageRefRendering" for a sitemap.
171077	Developer	SiteArchitect (JavaClient)	Template Development	Malfunctions could sometimes occur when saving a data object (CMS_INCLUDE_OPTIONS) without a TABLE definition, e.g., within the CMS_INPUT_COMBOBOX input component.
157108	Developer	SiteArchitect (JavaClient)	Template Store	A change to the "target extension" for a template set ("Properties / General / File extension") was not detected in page, section, and table templates.
135657	FirstSpirit Administrator	Administration	Tasks	A new function has been added to the schedule overview so that work runs more smoothly when larger volumes of data are involved. Further information can be found in the introduction (subpoint "Schedule overview: Improved performance when handling a large number of schedules").
163122	FirstSpirit Administrator	ServerManager (Server and Project Configuration)	Export / Import	When a project with a database was imported into a standard database layer, the database schema was incorrectly not completely adapted.
170196	FirstSpirit Administrator	ServerManager (Server and Project Configuration)	Modules	Memory consumption has been optimized for module updates during continued operation (without restarting the FirstSpirit Server).
166667	FirstSpirit Administrator	ServerManager (Server and Project Configuration)	None	The current states of configuration files are stored on the FirstSpirit Server under "-FS/conf/conf-all". In FirstSpirit version 5.1.507 and higher, the "fs-wrapper.slave.conf" file is also stored there.
173802	FirstSpirit Administrator	ServerManager (Server and Project Configuration)	None	The description was not always included for the resolution under the project properties.
170038	FirstSpirit Administrator	SiteArchitect (JavaClient)	Archiving	How archived elements are handling during the archiving process has been optimized.

ID	Role	Category	Sub Category	Description
170168	FirstSpirit Administrator	SiteArchitect (JavaClient)	Content Store	The definition of a query may be checked in the tab "Result". Details for a row in the result table may be viewed by double-clicking on that row.
164343	FirstSpirit Administrator	SiteArchitect (JavaClient)	ContentTransport	Malfunctions could occur when a schema in the target project was updated (with "Content Transport" or "External synchronization").
169787	FirstSpirit Administrator	SiteArchitect (JavaClient)	Corporate Content	Using the functionality "CorporateContent" with multiple source projects could lead to unintentional removal (unbinding) of an element's association with its package in the target project.
171242	FirstSpirit Administrator	SiteArchitect (JavaClient)	Modules	Malfunctions could occur during the installation of portal scripts when using the "Portal SAP EP BP" module.