

Crownpeak DQM Plug-in

Installation Guide for: Sitecore 9.1 and 9.3

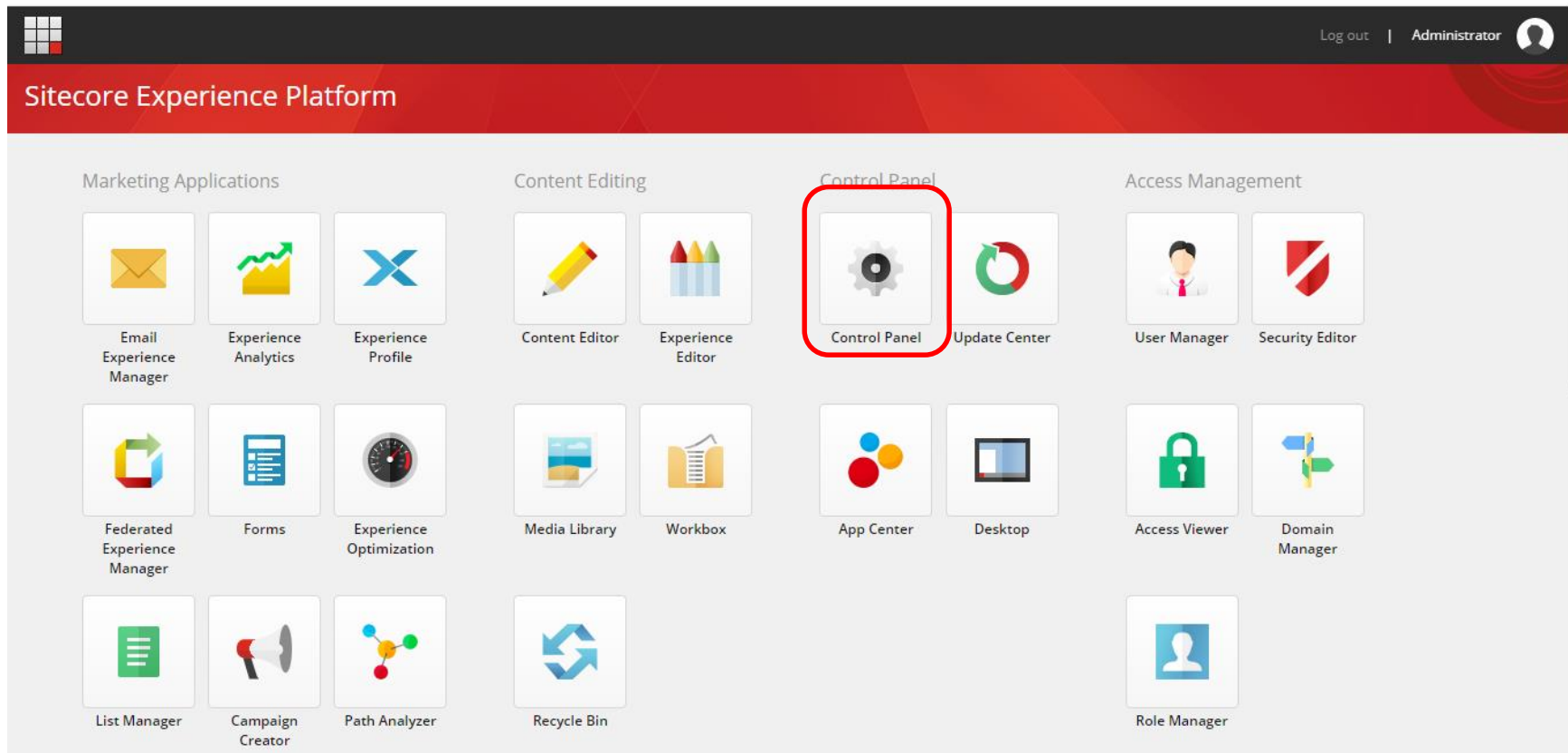
Requirements

- ✓ Sitecore 9.1 or 9.3
- ✓ Admin access on your Sitecore instance
- ✓ Crownpeak API Key
- ✓ Crownpeak configured Website ID

1 Install the New Plug-in

1.1 Upload & Install New Package

1. Log into Sitecore
2. Navigate to the Sitecore Launchpad section and choose Control Panel



1.2 Upload & Install New Package



3. Under Administration choose Install a Package

The screenshot displays the Crownpeak administration interface. At the top right, there is a navigation bar with 'Log out' and 'Administrator' (with a user icon). The main content area is divided into several sections:

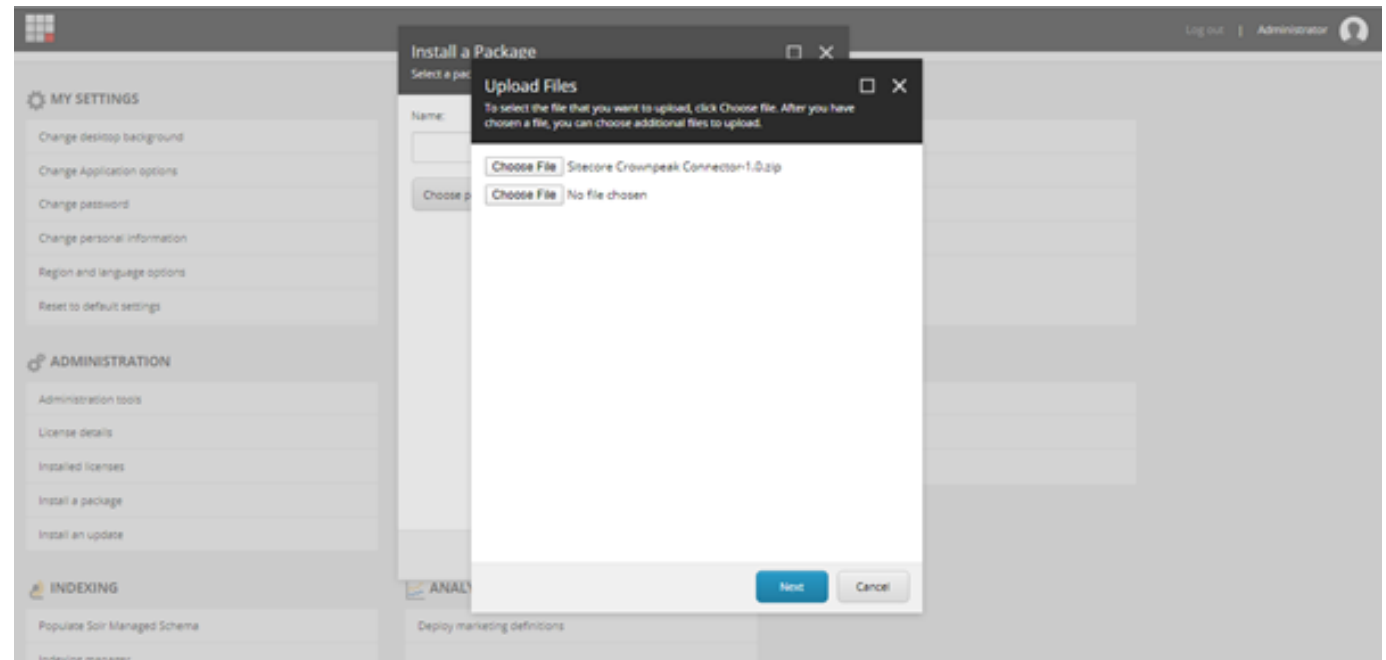
- MY SETTINGS** (gear icon): Change desktop background, Change Application options, Change password, Change personal information, Region and language options, Reset to default settings.
- DATABASE** (database icon): Rebuild link databases, Move an item to another database, Clean up databases, Display database usage.
- LOCALIZATION** (globe icon): Export languages, Import languages, Add a new language, Delete a language.
- ADMINISTRATION** (gear icon): Administration tools, License details, Installed licenses, **Install a package** (highlighted with a red box), Install an update.
- REPORTS** (document icon): Scan the database for broken links, Scan the database for untranslated fields.
- SECURITY** (shield icon): User manager, Role manager.

At the bottom left, there is a small text element 'javascript: void(0) | G'. At the bottom center, there is a logo for 'ANALYTICS'.

1.3 Upload & Install New Package



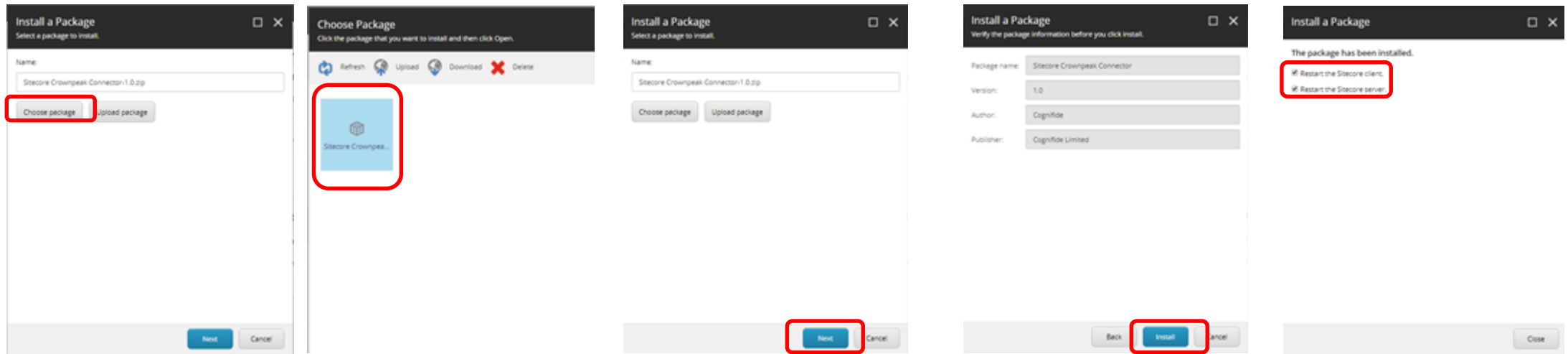
4. Choose Upload package on the Install a Package dialog box
5. Click on Choose file and upload the Sitecore Crownpeak Connector zip file
6. Click Next
7. Check Overwrite existing file and proceed (if asked)
8. Close the Upload files dialog



1.4 Upload & Install New Package



9. Upon returning to the Install Package page select Choose package
10. Select the package and click Next
11. You can then leave the name as default and Choose Next
12. Confirm that you have selected the correct package and click Install
13. Choose to restart the Sitecore client and Sitecore server and click Next
14. Close the dialog box



1.5 Configure Bindings

15. Once installed edit the configuration file located in /App_Config/Include/Cognifide.Crownpeak.config of application root. You will need to add the API Key and Website ID provided by Crownpeak Support

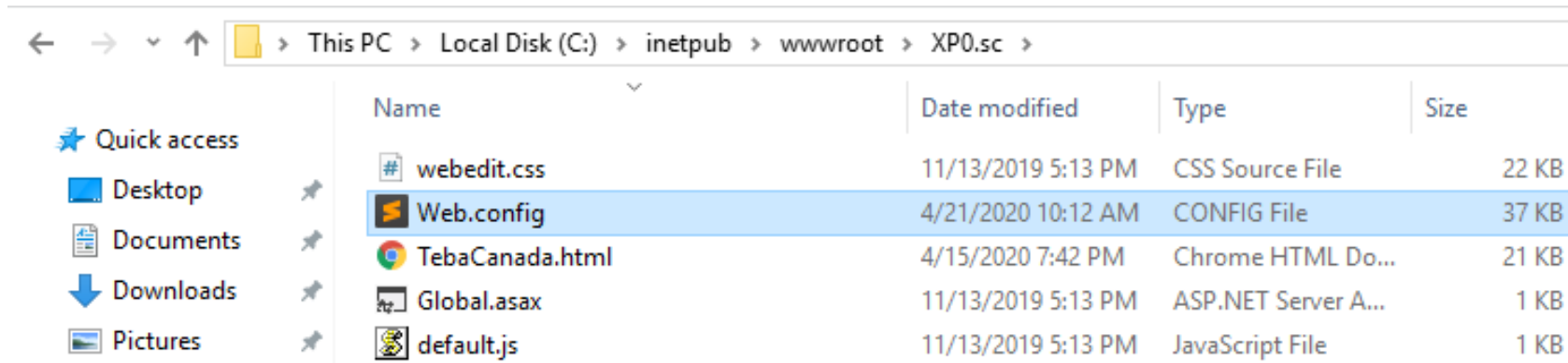
```
----- Cognifide.crownpeak.config looks like this:-----  
-----  
<configuration xmlns:patch="http://www.sitecore.net/xmlconfig/">  
  <sitecore>  
    <commands>  
      <command name="crownpeakdqm:previewtab"  
type="Cognifide.Sitecore.Crownpeak.Commands.ShowPreviewTab, Cognifide.Sitecore.Crownpeak" />  
    </commands>  
    <settings>  
      <setting name="Crownpeak.ApiKey" value="add APIkey here" />  
      <setting name="Crownpeak.websiteId" value="add website ID here" />  
      <setting name="Crownpeak.RetryCount" value="5" />  
    </settings>  
  </sitecore>  
</configuration>  
-----  
-----
```


2 Update web.config

2.1 Open web.config

In order for source code highlighting to work in the DQM Sitecore connector, Sitecore's default content-security-policy (CSP) needs to be modified:


1. Navigate to your Sitecore installation directory off your web root
2. Locate and open your web.config file



2.2 Add dqm.crownpeak.com



3. With web.config open, search for location path="sitecore"



```
Web.config X
C:\inetpub\wwwroot\XP0.sc> Web.config
75 <!-- SYSTEM.WEBSERVER
76 This section is a ASP.NET configuration section when running in Integrated Mode on IIS7.
77 -->
78 <location path="sitecore">
79 <system.webServer>
80 <httpProtocol>
81 <customHeaders>
82 <remove name="X-Content-Type-Options" />
83 <remove name="X-XSS-Protection" />
84 <remove name="Content-Security-Policy" />
85 <add name="X-XSS-Protection" value="1; mode=block" />
86 <add name="X-Content-Type-Options" value="nosniff " />
87 <add name="Content-Security-Policy" value="default-src 'self' 'unsafe-inline' 'unsafe-eval' https://apps.sitecore.net; img-src 'self' data;; sty
88 </customHeaders>
89 </httpProtocol>
90 </system.webServer>
91 </location>
92 </system.webServer>
```

4. Add <https://dqm.crownpeak.com> to the Content-Security-Policy

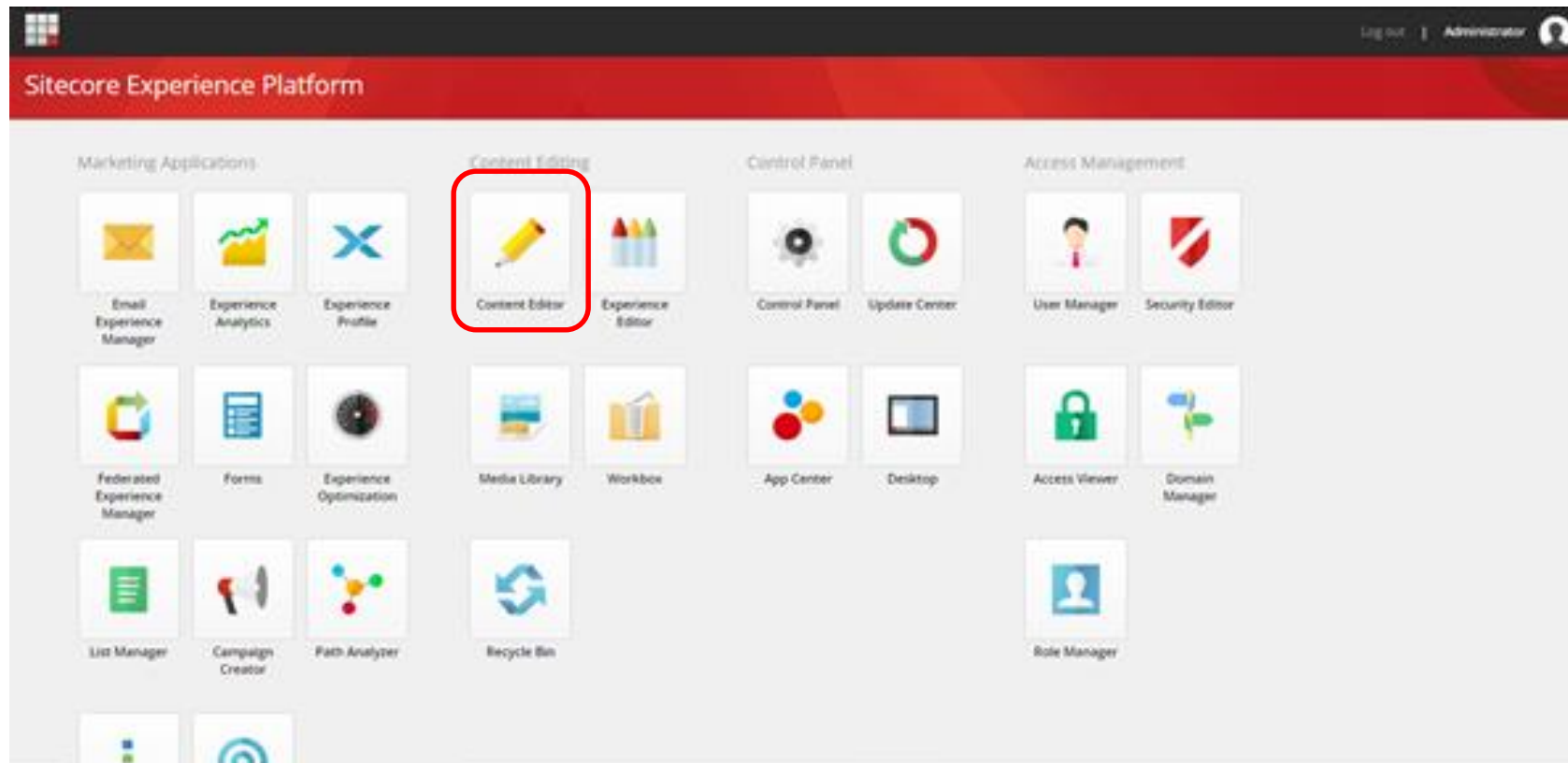
Example:

```
<add name="Content-Security-Policy" value="default-src 'self' 'unsafe-inline' 'unsafe-eval'
https://apps.sitecore.net https://dqm.crownpeak.com; img-src 'self' data;; style-src 'self' 'unsafe-inline'
https://fonts.googleapis.com https://dqm.crownpeak.com; font-src 'self' 'unsafe-inline'
https://fonts.gstatic.com https://dqm.crownpeak.com; upgrade-insecure-requests; block-all-mixed-content;" />
```

3 Using the DQM Plug-in

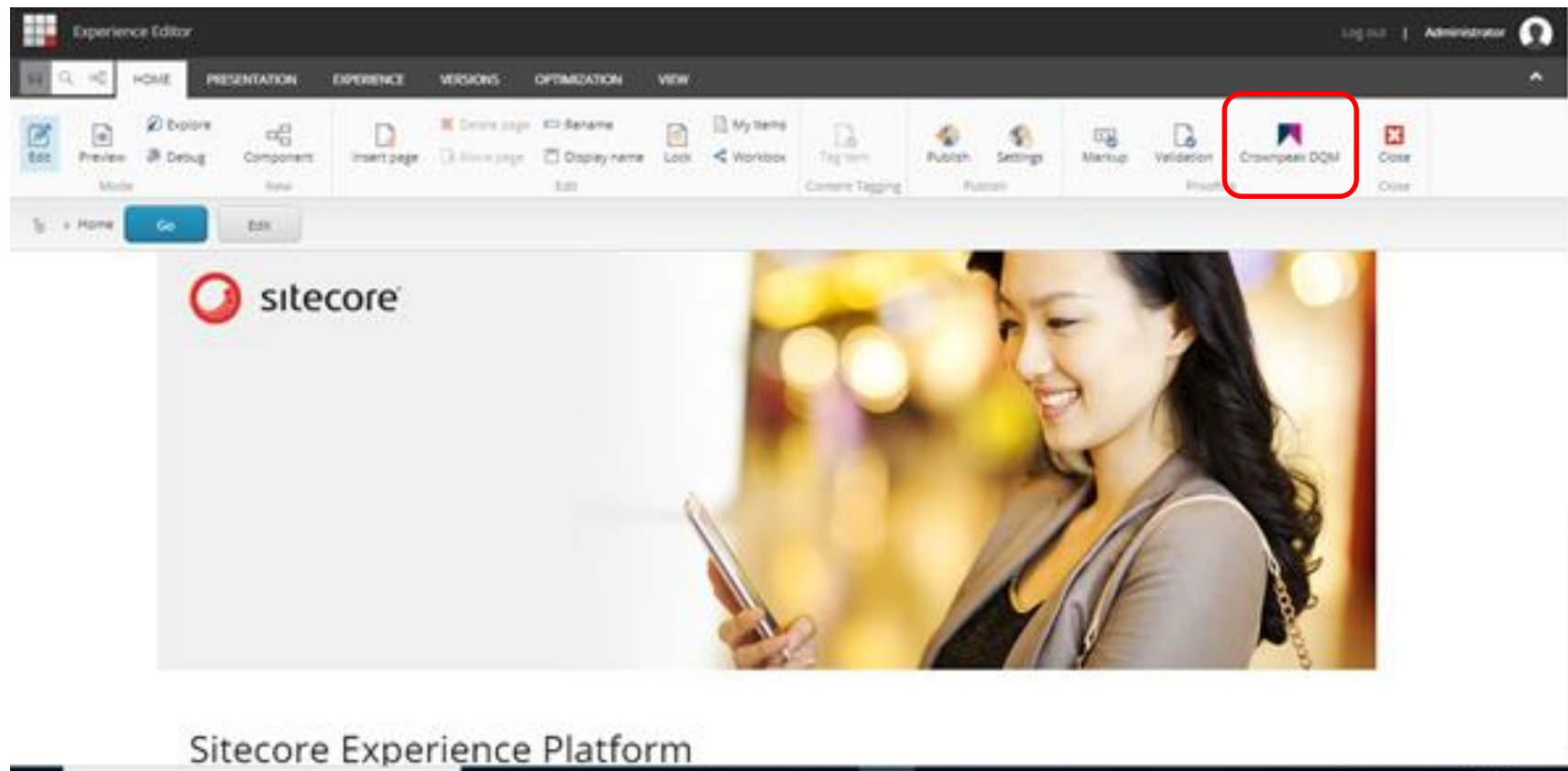
3.1 Analyzing a web page

1. Under Content Editing choose Content Editor



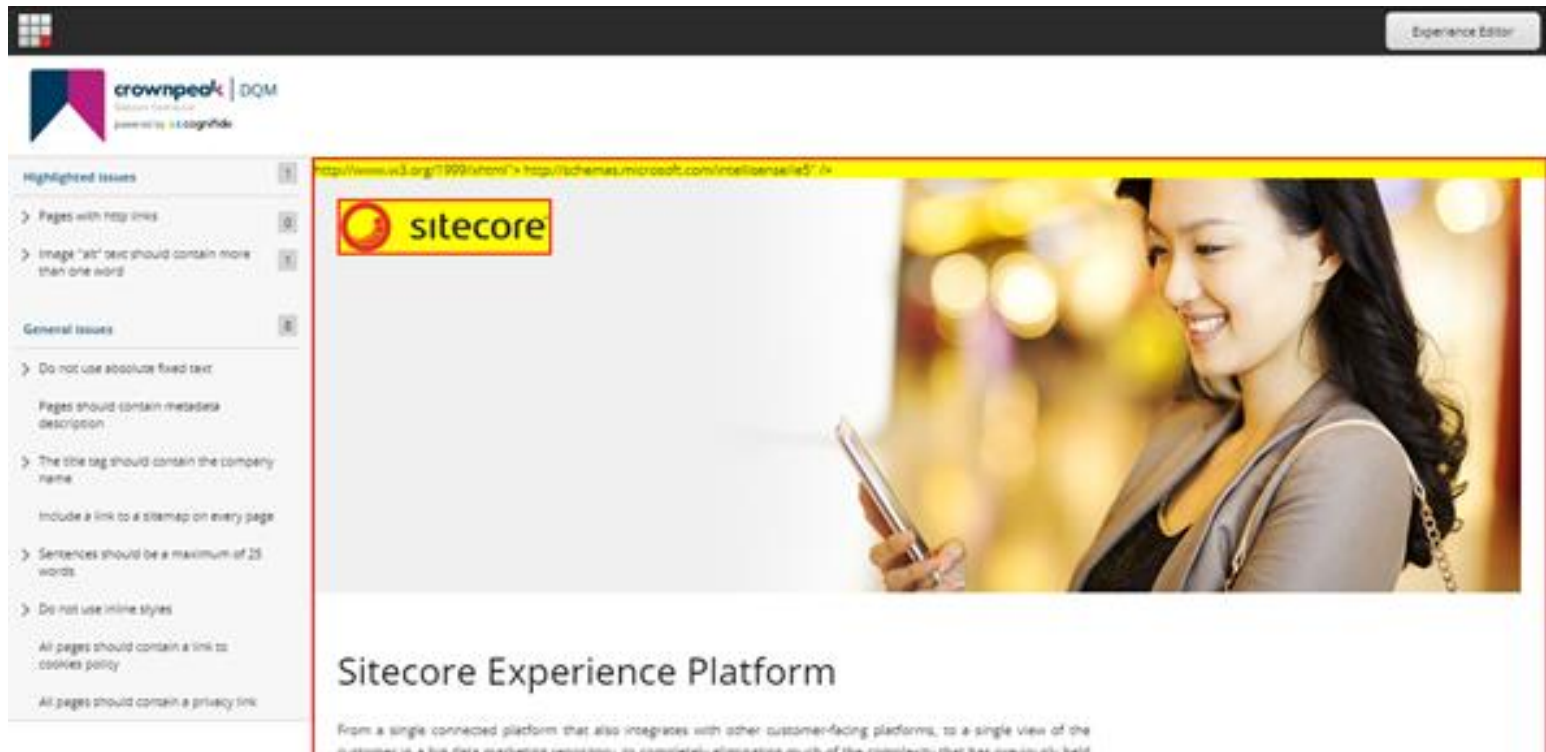
3.2 Run DQM Validation

- Under the Home ribbon choose Crownpeak DQM to run the validation



3.3 Issue Highlighting

- The list of issues on the page will be displayed on the left and a preview on some of the issues are highlighted on the right



- You can then a specific issue on the left in order to see the details of that specific issue

Thank You

If you experience any problems, or have any questions regarding the DQM Connector please contact Crownpeak Support using the details below.

Crownpeak DQM Support

dqmhelp@crownpeak.com | support.crownpeak.com